

## **Frequently Asked Questions about visiting Essex by water:**

### **Where do I reserve a mooring or slip?**

A common way for boaters to reserve a mooring or slip is to use the Dockwa app or website [Dockwa | Marina dock, slip, and mooring reservations made simple.](#)

[Safe Harbor Dauntless Marina](#) has several moorings available for rental. Launch service is included or you can use their dinghy dock as part of your mooring rental.

[Essex Yacht Club](#) accepts transient boaters who have club reciprocity. Please see their website for further details.

[Essex Corinthian Yacht Club](#) maintains two guest moorings in Essex Harbor that are managed by Safe Harbor. These moorings are reserved like a Safe Harbor mooring through Dockwa for reciprocating club and ECYC members.

[The Connecticut River Museum](#) provides temporary docking for museum members.

### **Is there a launch service and how much does it cost?**

The launch service is for mooring customers only. See the Dockwa app or website [Dockwa | Marina dock, slip, and mooring reservations made simple](#) to reserve a mooring.

### **What is the launch VHF channel?**

The Safe Harbor Dauntless Marina and Essex Yacht Club launches monitor VHF Channel 68. Specify the launch you need when hailing (ex: "Safe Harbor Launch, Safe Harbor Launch, this is BOAT NAME on mooring NUMBER.").

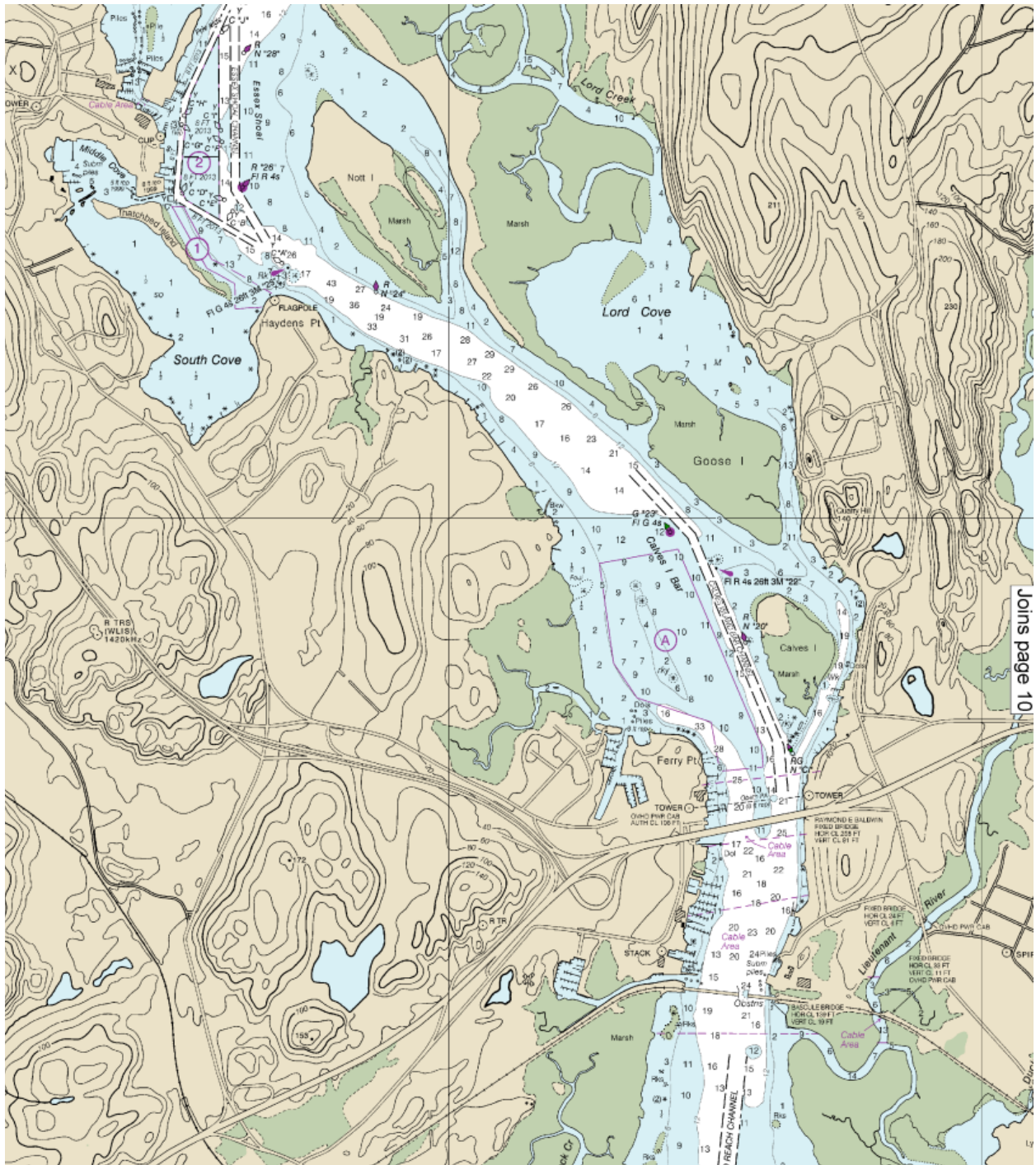
Safe Harbor Dauntless Shipyard, Safe Harbor Essex Island, and Essex Boat Works monitor VHF Channel 9

### **What are the launch hours?**

Safe Harbor Dauntless In season (Memorial Day to Labor Day) is Sunday through Thursday 8am to 9pm, Friday and Saturday 8am to 11pm. Off season (May 1 to Memorial Day) and (Labor Day to the end of October) days and times vary.

## Are there navigational challenges I should be aware of?

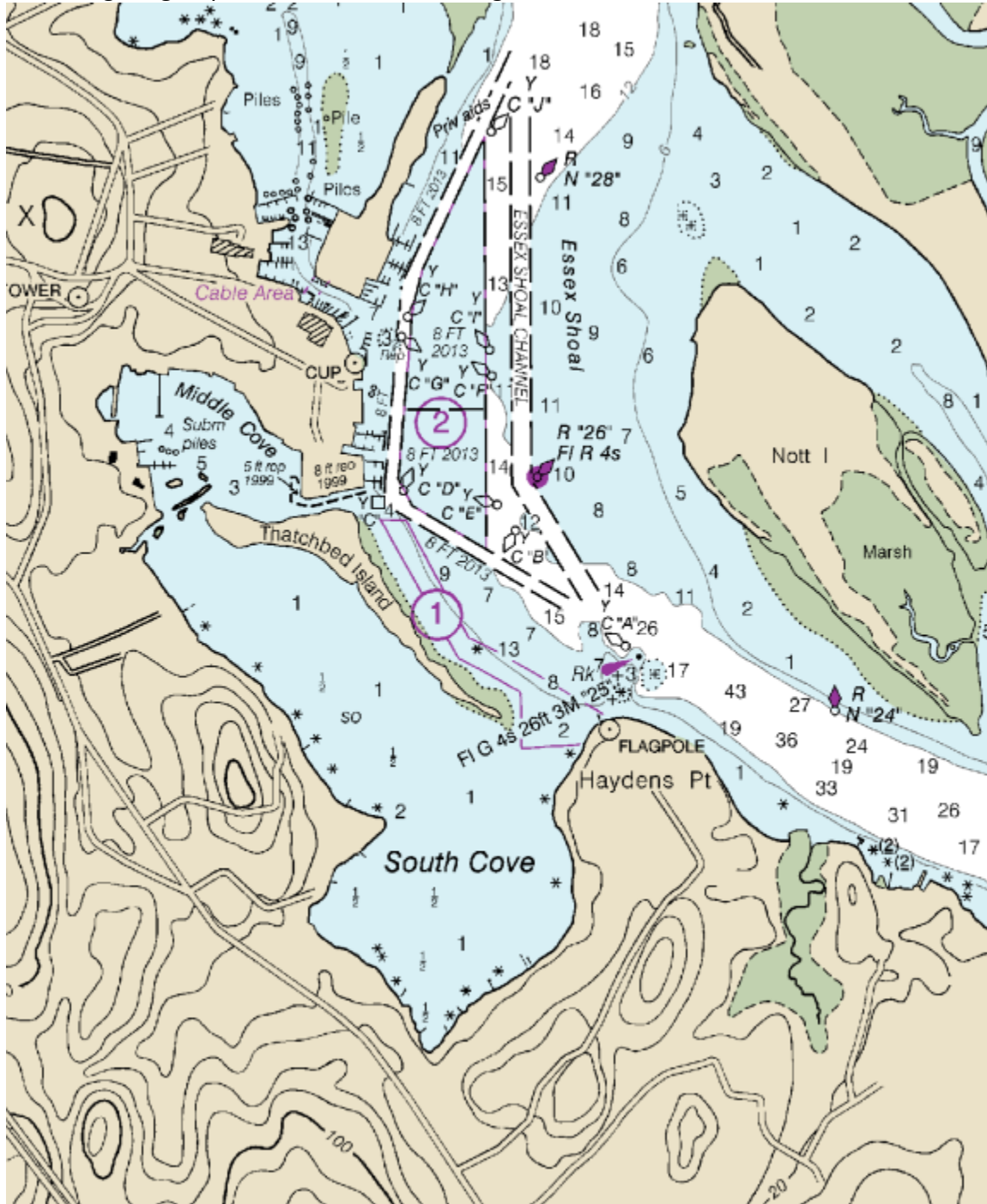
If approaching Essex from Long Island Sound, you will need to pass under a train bridge. To request the bridge to be opened hail “Old Lyme Draw” on VHF Channel 13. Be aware that, due to shoaling, the water can become shallow quickly if navigating out of the channel. Also be aware of the river currents (river and tidal), and that it is common for debris (slightly submerged logs) to be present in the river. It is best to maintain a safe speed to spot debris.



## Where can I anchor in Essex?

Anchoring east of the river channel is outside the Federal Anchorage area and requires use of day markers and/or anchor light.

An area inside the Federal Anchorage that is reserved for anchoring is in the northern section, east of Essex Island. Yellow markers indicate the Federal Anchorage area. No day marker or anchor lighting required inside this anchorage area.



### **Where are the dinghy docks?**

The main dinghy dock is located at the Town Dock, at the foot of Main St., next to the CT River Museum. In season there is a floating dock for dinghies. You may also use the float in Middle Cove off the Town Park (very scenic), or the Bushnell Street access on the north side of Safe Harbor Dauntless Shipyard (which has no float).

### **Is there a town dock?**

Yes. There is a town dock that can accommodate two boats up to 25 feet. However, please note the dock is perpendicular to the CT River current and tidal current. The tie-up limit during the day is **4 hours**. Overnight tie-ups on the dock are not permitted.

### **Can we raft up in Essex?**

Due to the potentially swift river currents, rafting is not allowed.

### **Is there a pump-out boat?**

Yes, a pump-out boat is available and Essex Harbor is a “no discharge” area. The pump-out boat is free and is located at the Safe Harbor Dauntless Marina fuel dock. There is also a lower Connecticut River pump-out boat that you can reach on channel 72 from Memorial Day to October.

### **What is the pump-out boat VHF Channel and hours?**

Channel 72 Memorial Day to October.

Hours of Operation:

May 15 - Jun 30, weekends, and holidays 9am-5pm.

Jul 1 - Aug 31, Saturday - Thursday (with Friday as a make-up day), 9am-5pm.

Sep 1 - Oct 27, holidays 9am-5pm and additional service as needed based on boater demand and special events.

Contact Information:

VHF 72 or (860) 463-9753. You can also fly the Orange Pump-Out flag.

There is no charge for this service.

### **What is the speed limit in Essex Harbor?**

Essex Harbor is a no-wake zone marked by buoys north and south of the harbor. Boats should not exceed 5 knots in this zone.

**Is there a harbor patrol boat?**

Yes. While there is no actual phone number to call for the patrol boat, it is suggested to call the Coast Guard on VHF 16 or via phone (617) 223-8555; or 911 for emergencies. Troop F also has contact with the patrol boat via the State Police radio system, if necessary, in an emergency.

The Harbor Patrol Officers monitor maritime Channel 16, the national distress channel designated by the Coast Guard, on the marine VHF radio.

Troop F Dispatch (860-399-2100) may be a resource to offer for transients seeking routine police services on land in every town but Old Saybrook (which has its own police dispatch: 860-395-3142). Again, 911 for all emergencies.

Essex Fire Dept also has a fire boat with firefighting capability and search and rescue abilities.

**Is there a fuel dock in Essex?**

Yes. One is located at the Safe Harbor Dauntless Marina VHF 68.

**What marine services are available in Essex?**

Safe Harbor Dauntless Shipyard and Essex Boat Works are full-service shipyards.

**Are there public restrooms?**

Yes. Public restrooms are located at Essex Village Park on Main Street, next to the post office. The restrooms are a .2 mile walk from the Town Dock.

**What are some of the more popular attractions, via boat, in the Essex section of the Connecticut River?**

Nott Island, located on the east side of the CT River, is a popular spot to anchor. However, river current combined with tidal current can cause fast moving current.

Aside from Essex Harbor, boaters can also find transient moorings in the well-protected Hamburg Cove. The entrance to Hamburg Cove is east of Brockway Island. The channel at the entrance is narrow, and the water is VERY shallow just outside the channel.

**Where can we eat and shop?**

The Town of Essex is comprised of three villages: Essex, Centerbrook and Ivoryton. For visitor information including a complete list of restaurants, shops, museums, and galleries, please visit [Experience Essex](#).

The following lists restaurants in Essex Village that are within easy *walking distance* from the Town Dock:

[The Griswold Inn](#)

[Carlson's Landing](#)

[Privateers Pizza and Provisions](#)

[Siren Kitchen and Bar](#)

[Dockside at Dauntless](#)

[The Black Seal](#)

[Olive Oyl's Creative Cuisine](#)

[Essex Coffee & Tea](#)

[Sweet Ps Ice Cream & Smoothies](#)

**Uber or Taxi** is recommended for attractions, restaurants, and shops in Centerbrook & Ivoryton villages. Go to [Experience Essex](#) for MORE.

**Beer and Spirits Delivery to the Town Dock, call:**

Bob's Centerbrook Package Store - (860) 767-8059

That's the Spirit - (860) 767-8979

**Lodging:**

If you want a break from sleeping on the boat and want to spend the night in downtown Essex, check out [Griswold Inn | American Restaurant, Tap Room & Inn.](#)

**For the young mariners:**

There is a children's playscape and picnic table located in Grove Street Park, located behind Essex Town Hall, which is just under 1 mile from the Town Dock.

By taxi or Uber, or a 1.8-mile walk, you can visit the [Essex Steam Train & Riverboat.](#)