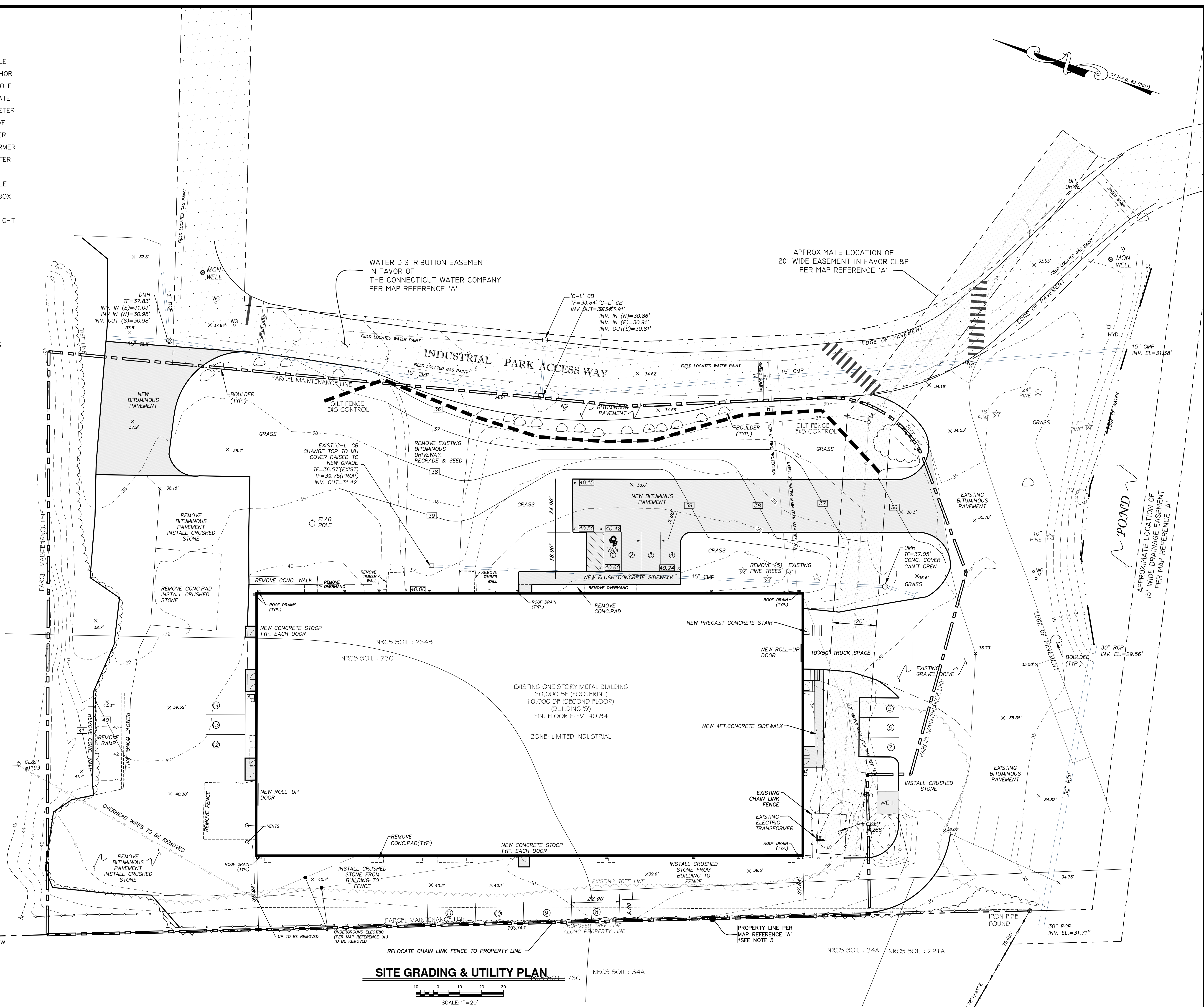
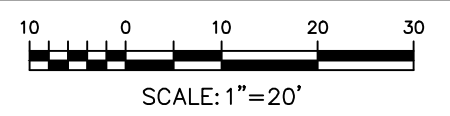


- LEGEND:
- IRON PIN (FOUND)
 - Rebar/Drill Hole (To Be Set)
 - MONUMENT (FOUND)
 - ⊙ DRAINAGE MANHOLE
 - ⊙ SANITARY MANHOLE
 - ⊙ ELEC. MANHOLE
 - ⊙ TELE. MANHOLE
 - ⊙ "C" CATCH BASIN
 - "C-L" CATCH BASIN
 - ⊙ DECIDUOUS TREES
 - ★ EVERGREEN TREES
 - ✪ SHRUB/BUSH
 - ⊙ FLAG POLE
 - ⊙ TRAFFIC CONTROL BOX
 - △ SIGN
 - POST
 - ☆ LIGHT POLE
 - ⊙ GUY ANCHOR
 - ⊙ UTILITY POLE
 - WG WATER GATE
 - ⊙ WATER METER
 - ⊙ GAS VALVE
 - ⊙ GAS METER
 - ⊙ TRANSFORMER
 - ⊙ ELEC. METER
 - ⊙ MAIL BOX
 - ⊙ HAND HOLE
 - ⊙ BUTTON BOX
 - ⊙ A.C. UNIT
 - ⊙ TRAFFIC LIGHT POLE

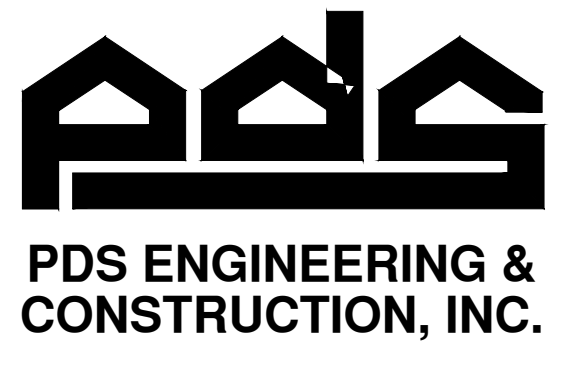
- BOUNDARY LINE
- GUARD RAIL
- UNDERGROUND PIPING (San., Strm.)
- U/G GAS LINE
- U/G ELEC. LINE
- WATER LINE
- OVERHEAD UTILITIES
- U/G TELE. LINE
- CHAIN LINK FENCE
- TREE LINE



SITE GRADING & UTILITY PLAN



DATE	ISSUE
11.24.2020	P&Z SPECIAL PERMIT APPLICATION
12.18.2020	PARCEL MAINTENANCE LINE
1.12.2021	ADD PARKING ADD DOOR STOOPS



PDS ENGINEERING & CONSTRUCTION, INC.
 107 Old Windsor Road
 Bloomfield, Connecticut 06002
 Telephone: (860) 242-8586
 FAX: (860) 242-8587

CONSULTANTS:

PROJECT NAME:
STORAGE PLACE
 35/41 INDUSTRIAL PARK ROAD
 ESSEX, CONNECTICUT

DRAWING TITLE:
SITE GRADING & UTILITY PLAN

SEAL

ENGINEER: FB
ARCHITECT:
PROJECT MGR:
DRAFTED BY: BF

C-100