

DATE	ISSUE
11.24.2020	P&Z SPECIAL PERMIT APPLICATION
1-12-2021	STORAGE UNIT LAYOUTS



PDS ENGINEERING & CONSTRUCTION, INC.

107 Old Windsor Road
Bloomfield, Connecticut 06002
Telephone: (860) 242-8586
FAX (860) 242-8587

CONSULTANTS:

PROJECT NAME:

STORAGE PLACE

35/41 INDUSTRIAL PARK ROAD
ESSEX, CONNECTICUT

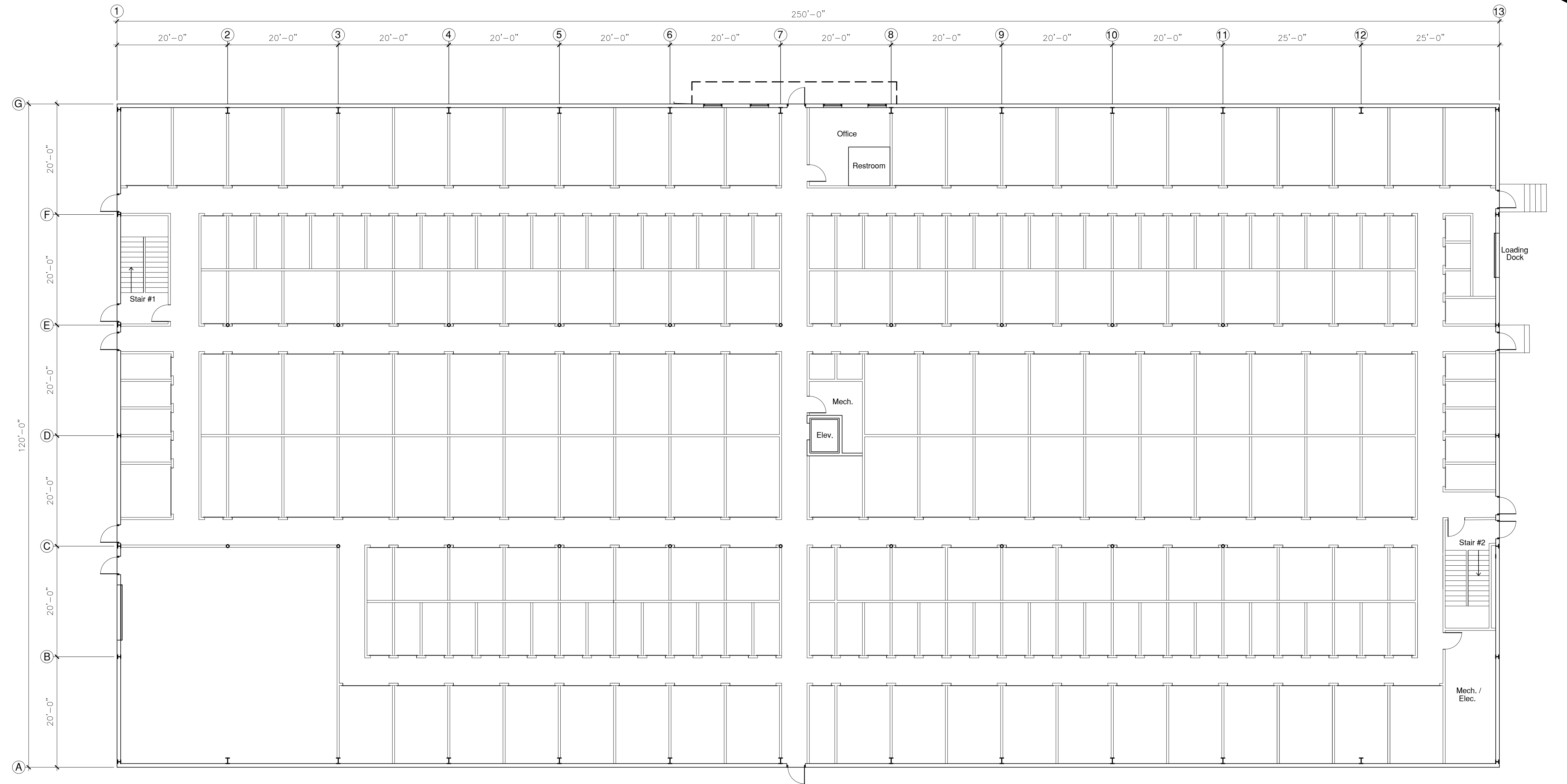
DRAWING TITLE:

PROPOSED FLOOR PLAN

SEAL

ENGINEER: FB
ARCHITECT:
PROJECT MGR:
DRAFTED BY: BF

A-100



PROPOSED FLOOR PLAN LAYOUT
3/32"=1'-0"