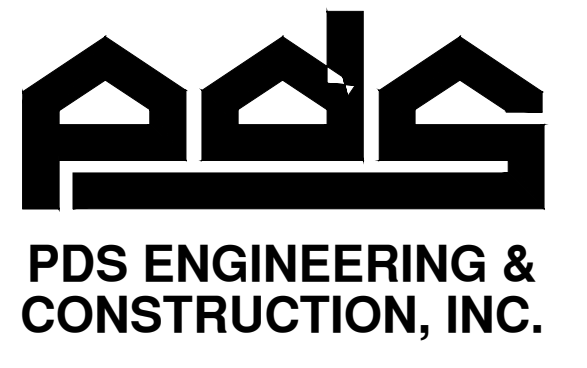
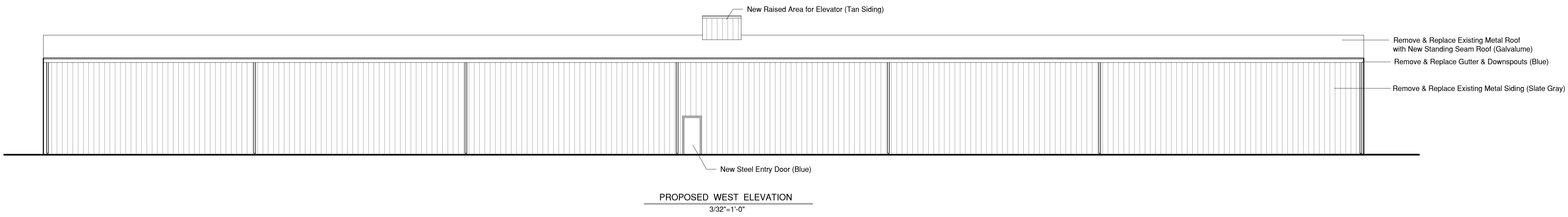
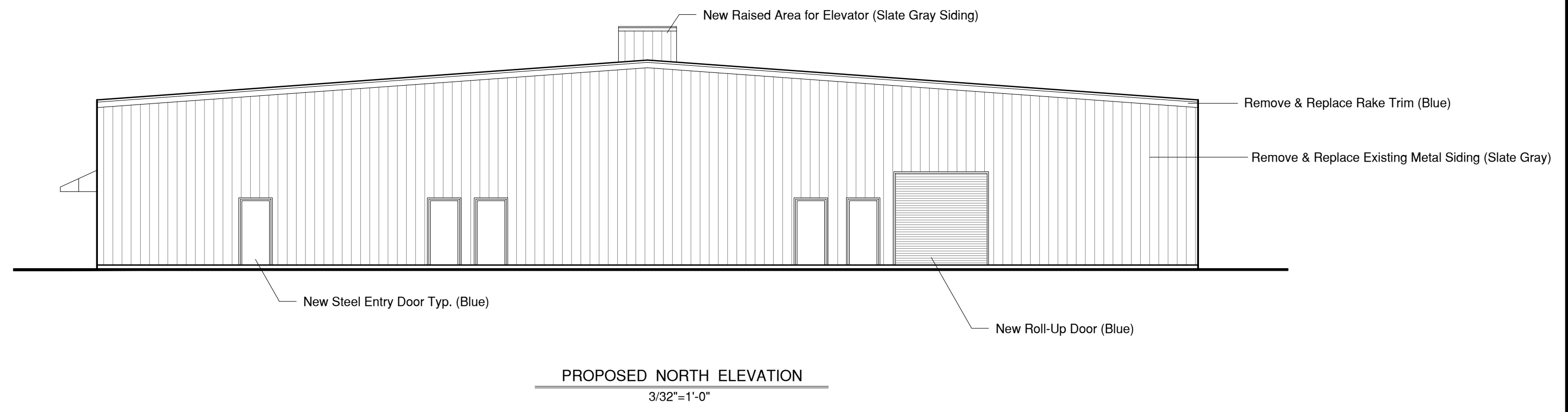
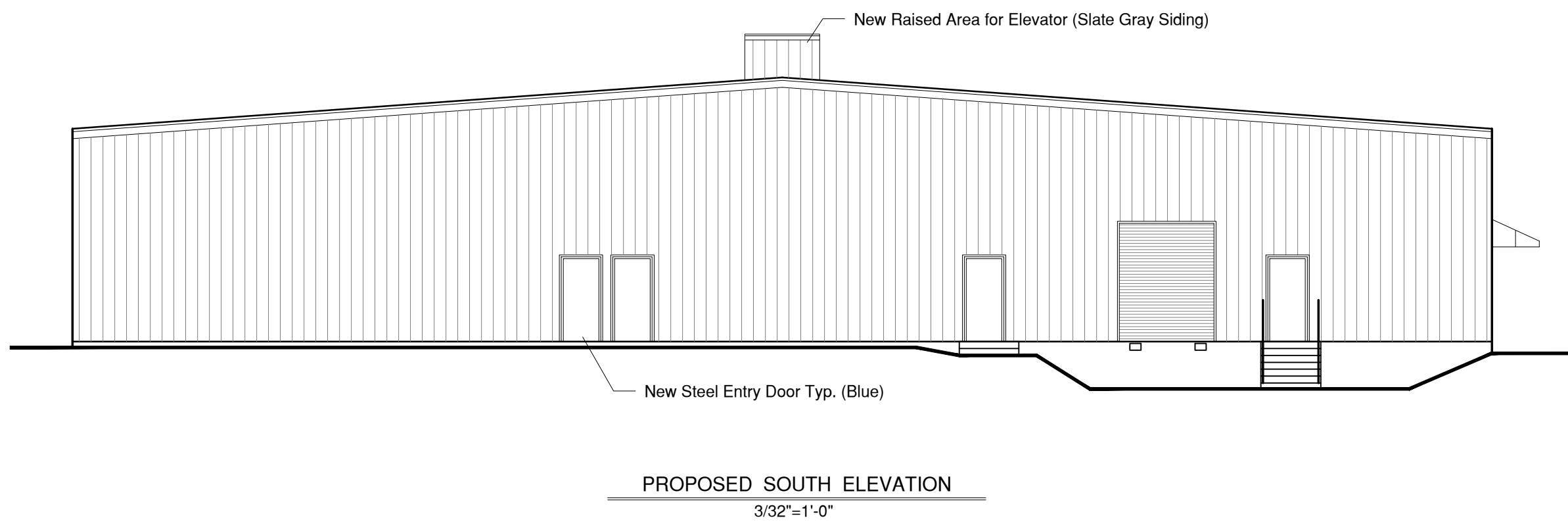


DATE	ISSUE
12.4.2020	P&Z SPECIAL PERMIT APPLICATION
1-8-2021	DELETE DOORS W. ELEV.
1-12-2021	COORDINATE FLR. PLAN



PDS ENGINEERING & CONSTRUCTION, INC.
 107 Old Windsor Road
 Bloomfield, Connecticut 06002
 Telephone: (860) 242-8586
 FAX (860) 242-8587

CONSULTANTS:

PROJECT NAME:
STORAGE PLACE

35/41 INDUSTRIAL PARK ROAD
 ESSEX, CONNECTICUT

DRAWING TITLE:
EXTERIOR ELEVATIONS

SEAL

 ENGINEER: FB
 ARCHITECT:
 PROJECT MGR:
 DRAFTED BY: BF

A-200