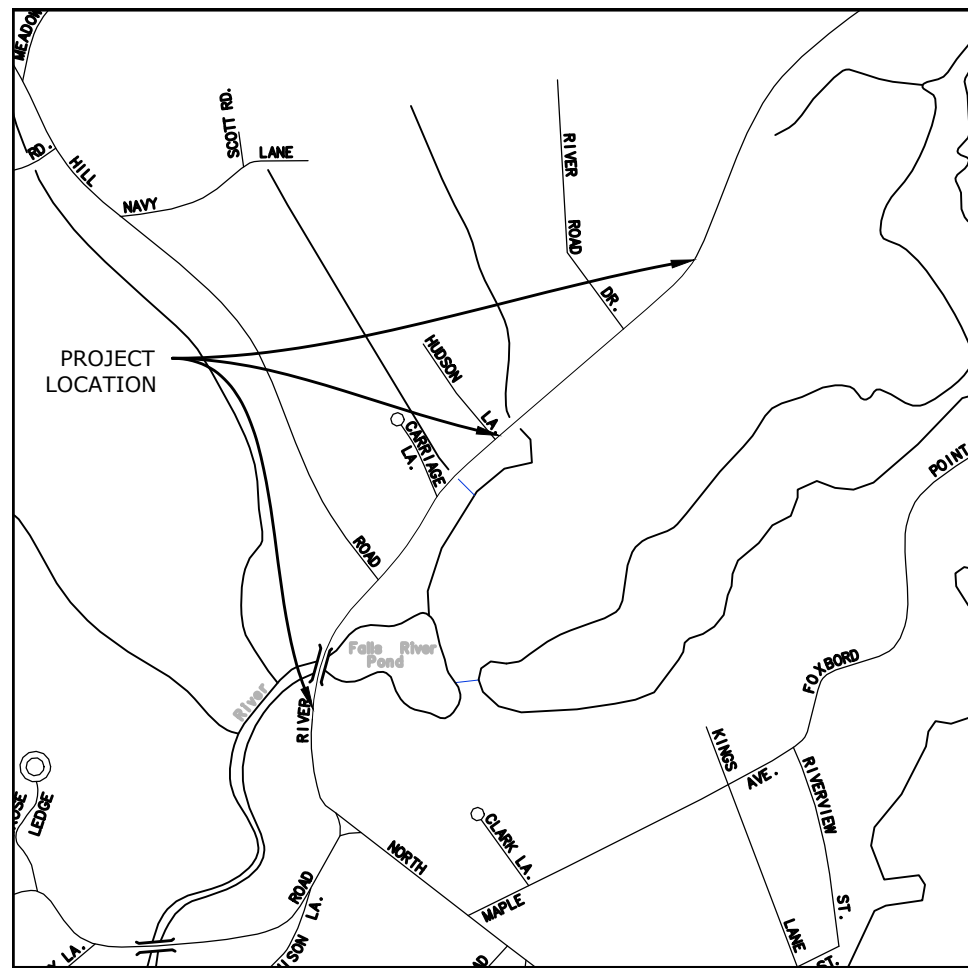
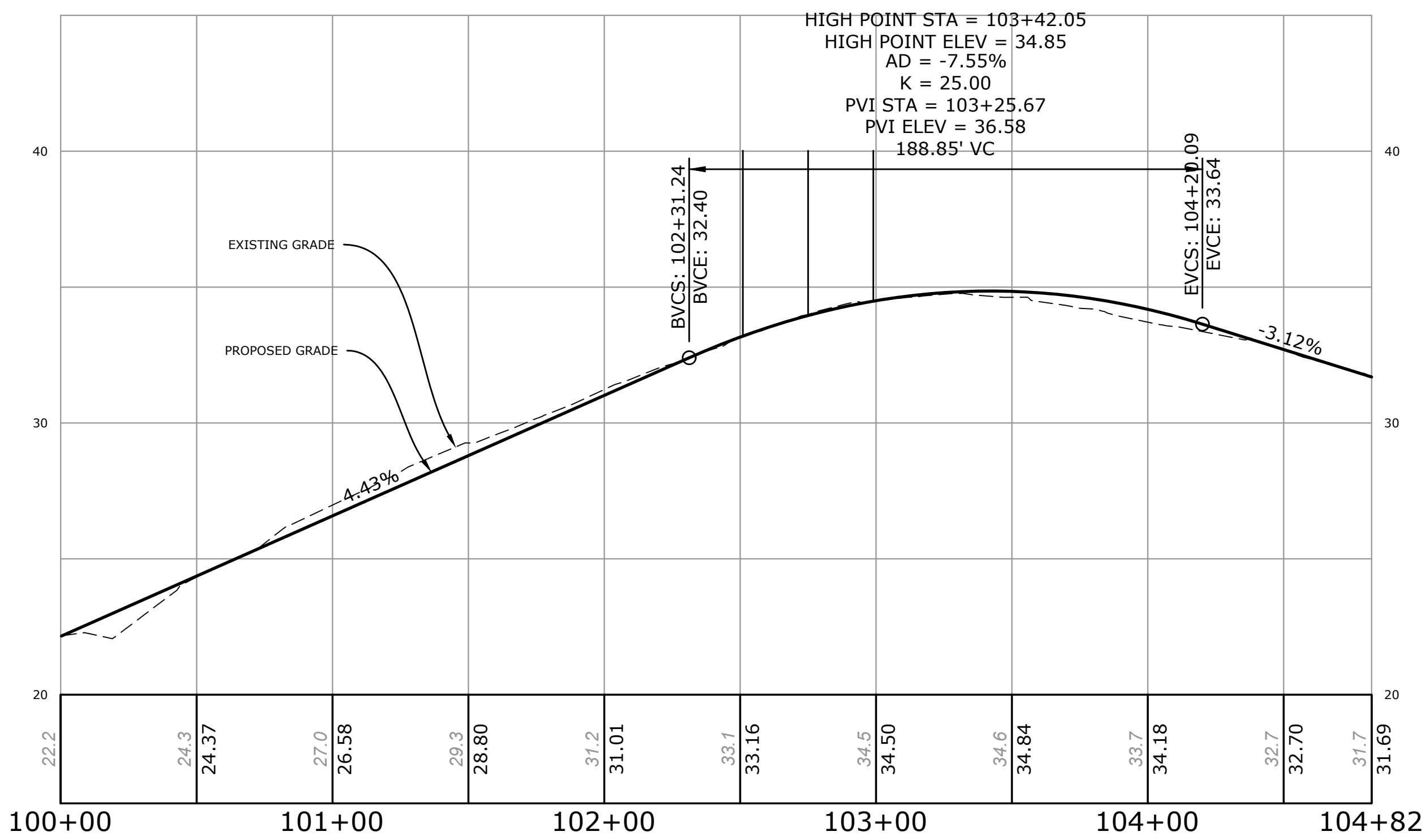
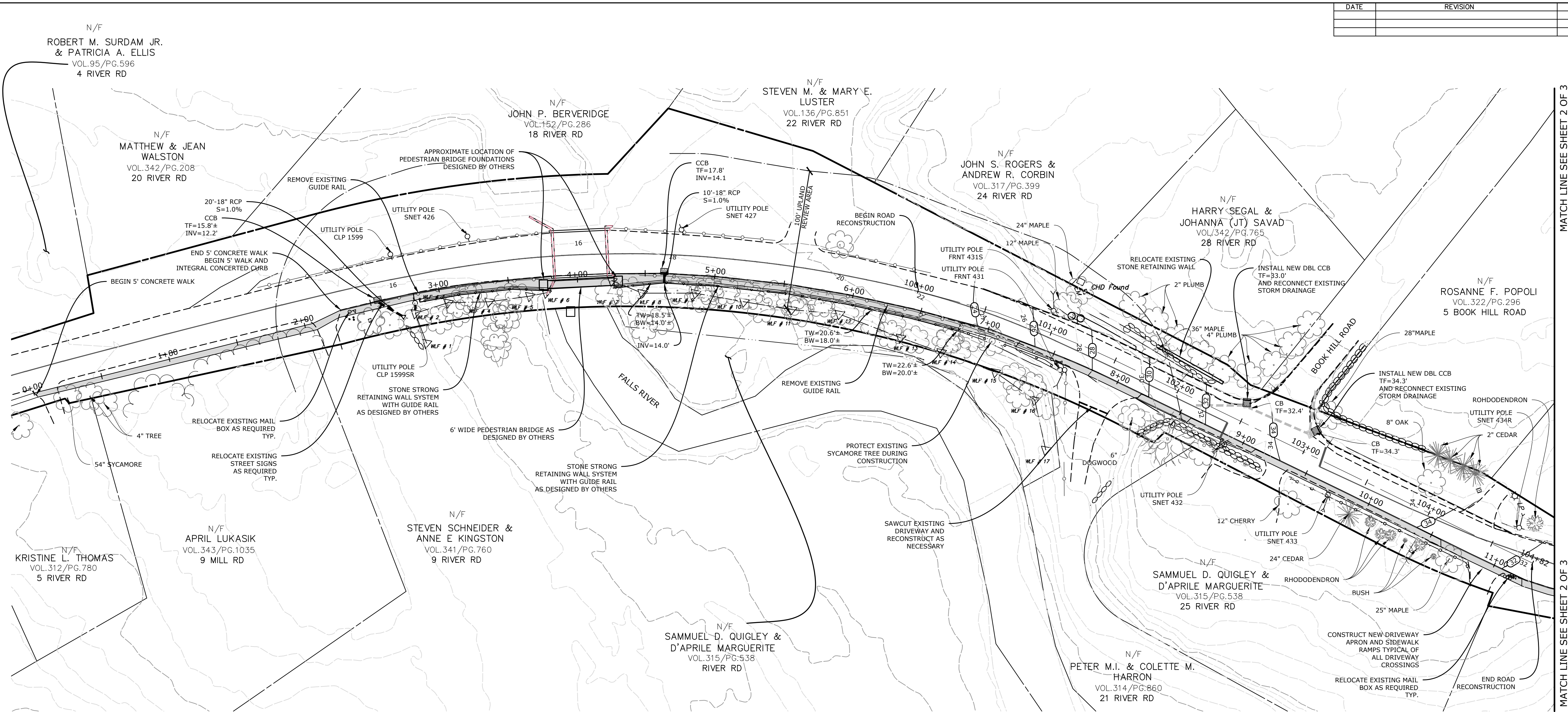


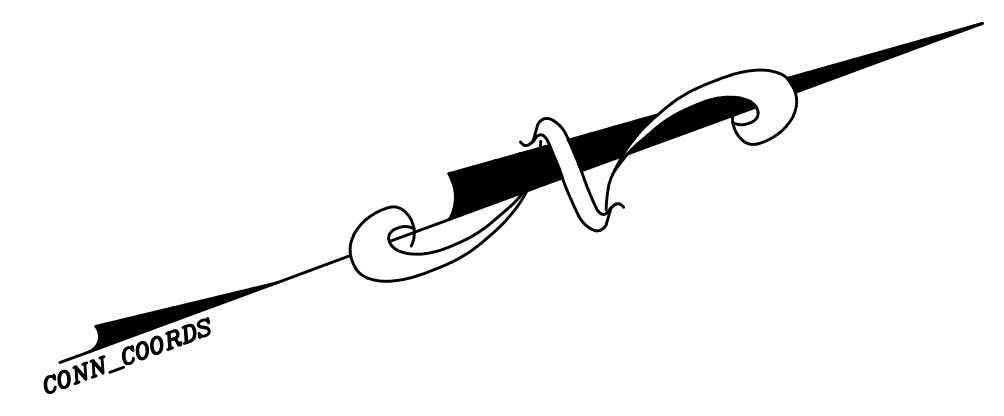
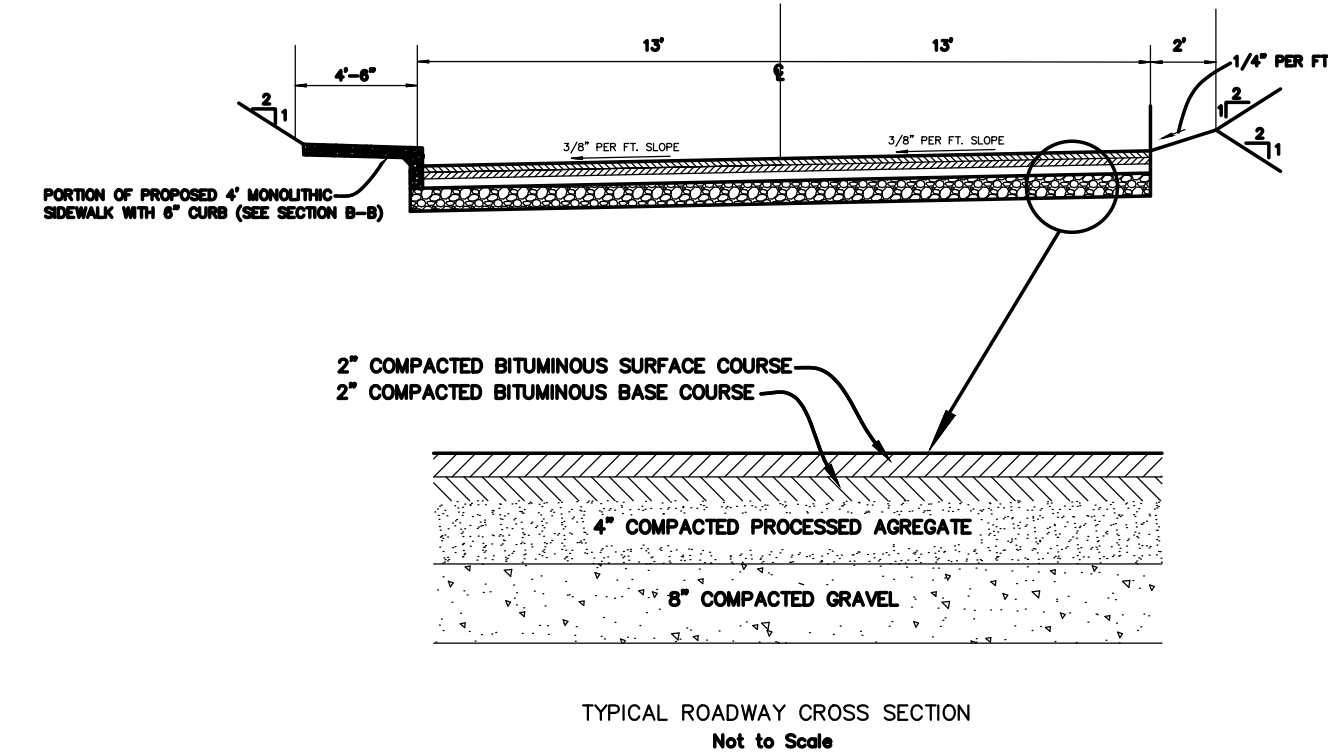
DATE	REVISION	CK.



LOCATION MAP  
SCALE: 1"=1000'±

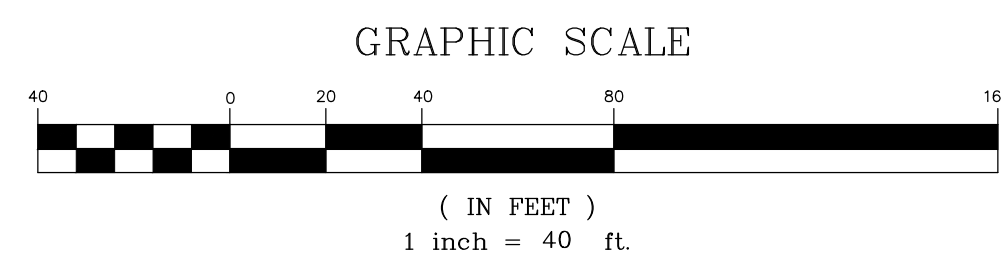
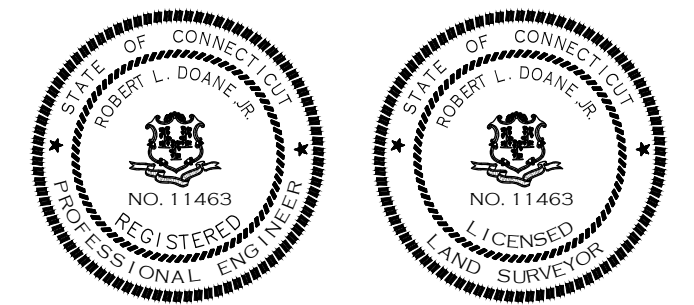


PROFILE VIEW  
HORIZONTAL SCALE: 1"=40'  
VERTICAL SCALE: 1"=4'



TO MY KNOWLEDGE AND BELIEF, THIS MAP IS SUBSTANTIALLY CORRECT AS NOTED HEREON.

*Robert L. Doane, Jr.*  
ROBERT L. DOANE, JR.  
CONN. P.E. & L.S. LIC. NO. 11463



RIVER ROAD PROPOSED SIDEWALK CONSTRUCTION

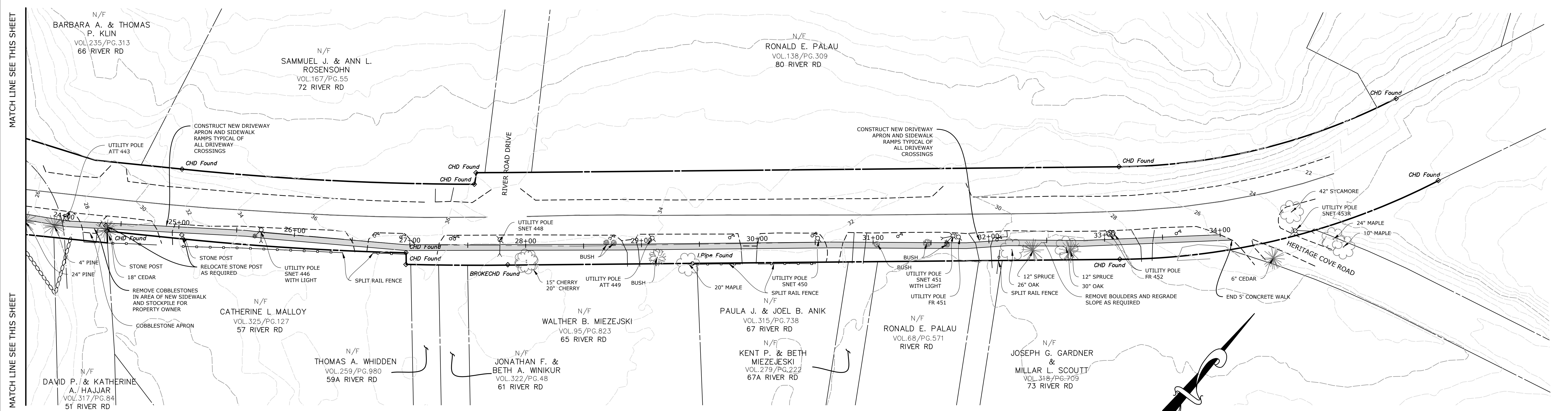
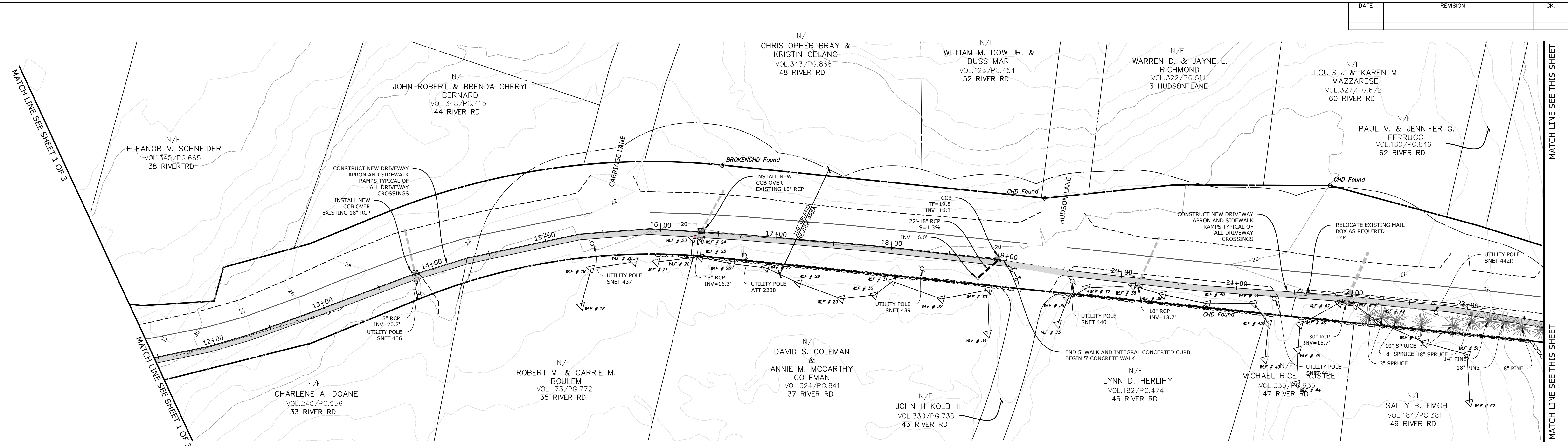
**DOANE ENGINEERING**  
CIVIL ENGINEERING AND LAND SURVEYING  
P.O. BOX 113 CENTERBROOK, CONNECTICUT 06409  
TEL: (860)767-0138, FAX: (860)767-9104

SITE PLAN  
PREPARED FOR  
TOWN OF ESSEX  
RIVER ROAD, ESSEX, CONNECTICUT

SCALE: 1"=40'	DATE: 02/24/23	SHEET NO.: 1 OF 3	IDENT. NO.:
------------------	-------------------	----------------------	-------------

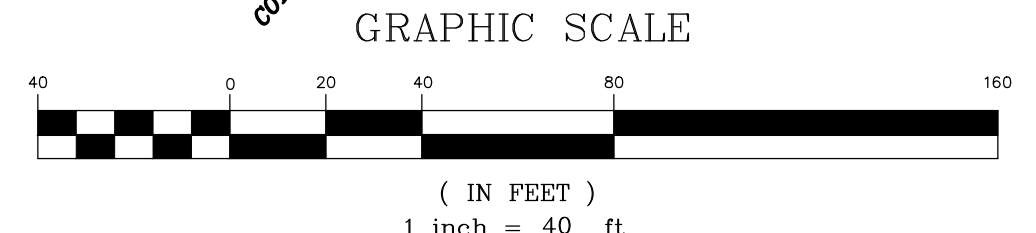
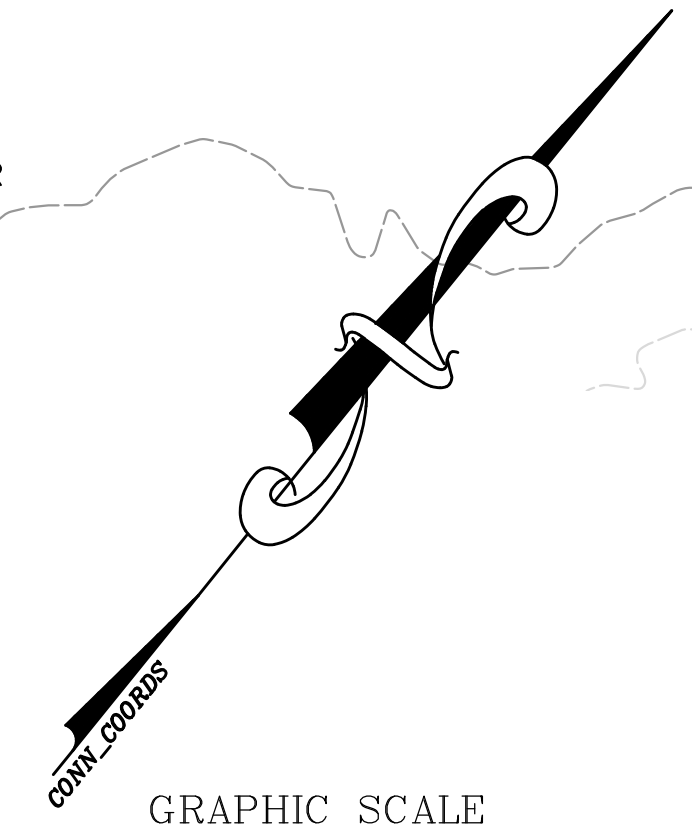
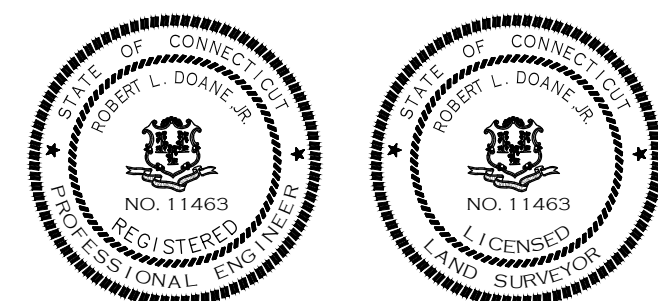
MATCH LINE SEE SHEET 2 OF 3

DATE	REVISION	CK.



TO MY KNOWLEDGE AND BELIEF THIS PLAN IS SUBSTANTIALLY CORRECT AS NOTED HEREON.

*Robert L. Doane, Jr.*  
 ROBERT L. DOANE, JR.  
 CONN. P.E. & L.S. LIC. NO. 11463



**RIVER ROAD PROPOSED SIDEWALK CONSTRUCTION**

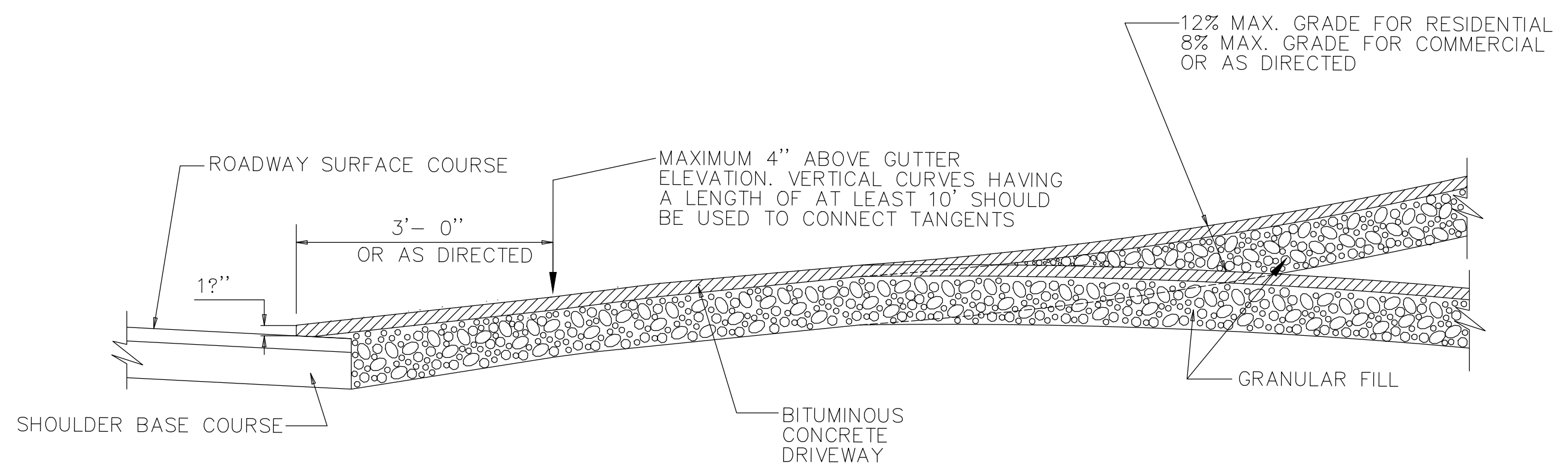
**DOANE ENGINEERING**  
 CIVIL ENGINEERING AND LAND SURVEYING  
 P.O. BOX 113 CENTERBROOK, CONNECTICUT 06409  
 TEL: (860)767-0138, FAX: (860)767-9104

---

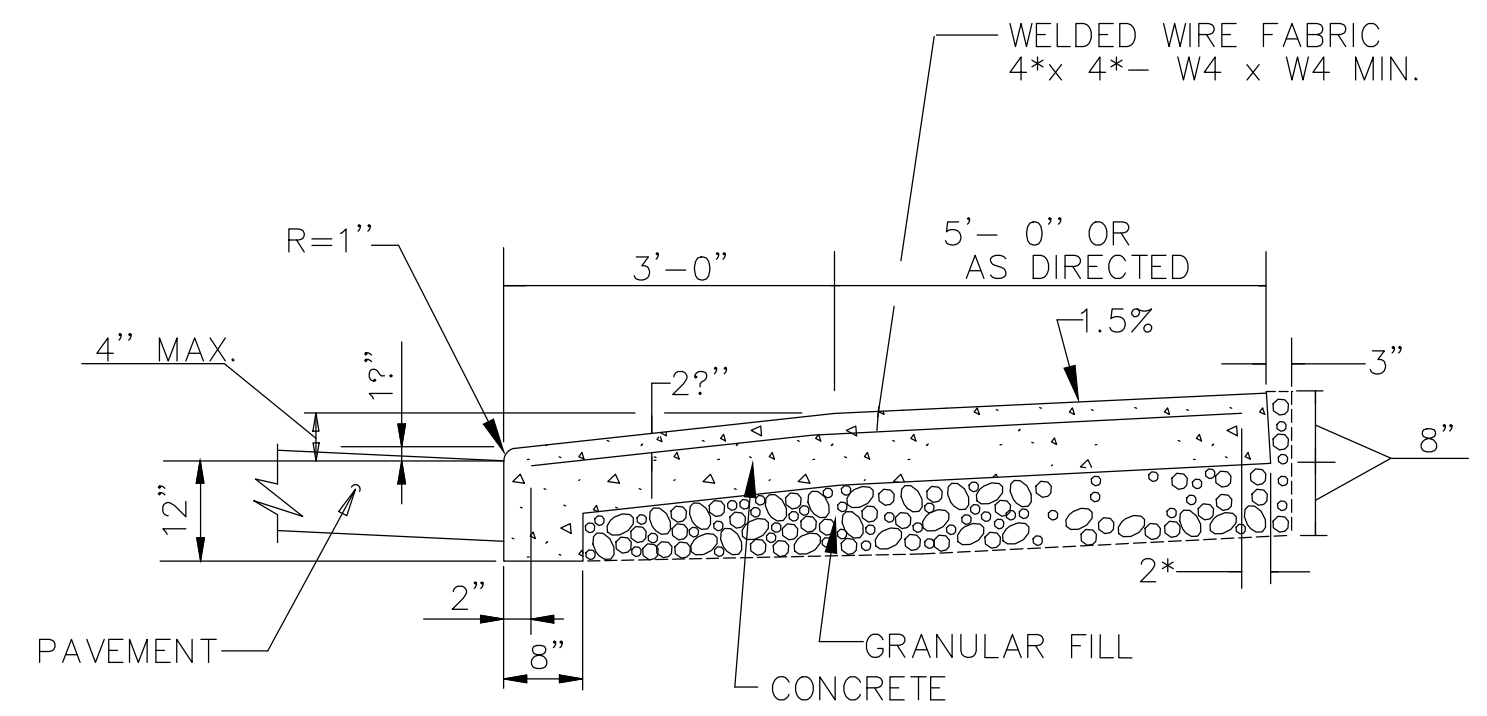
**SITE PLAN**  
 PREPARED FOR  
**TOWN OF ESSEX**  
 RIVER ROAD, ESSEX, CONNECTICUT

SCALE: 1"=40'	DATE: 02/24/23	SHEET NO.: 2 OF 3	IDENT. NO.:
------------------	-------------------	----------------------	-------------

DATE	REVISION	CK.

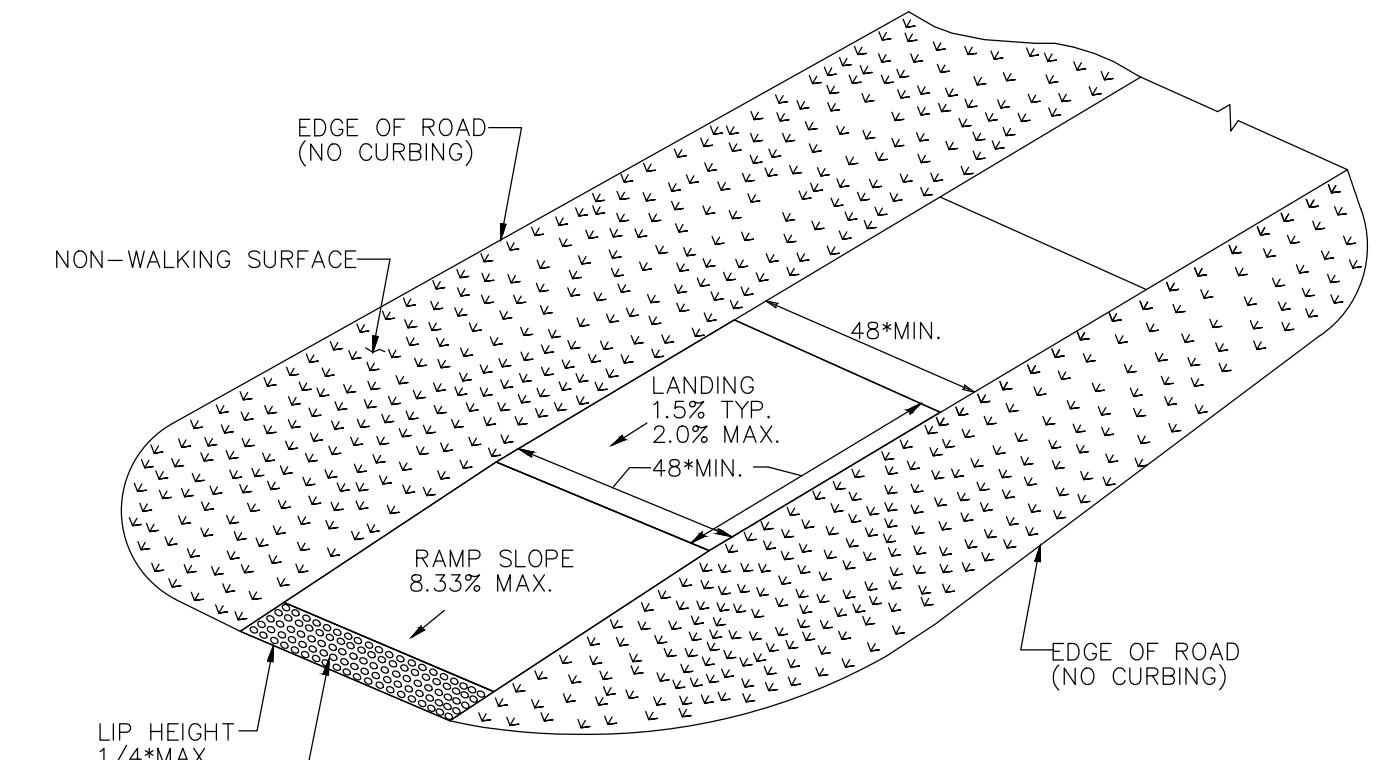


SECTION A

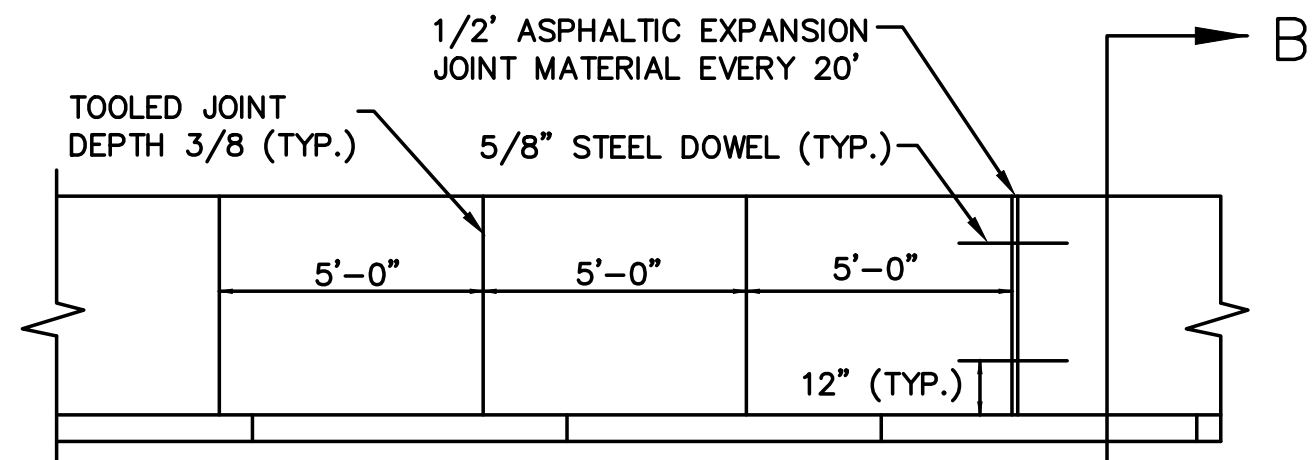


SECTION C

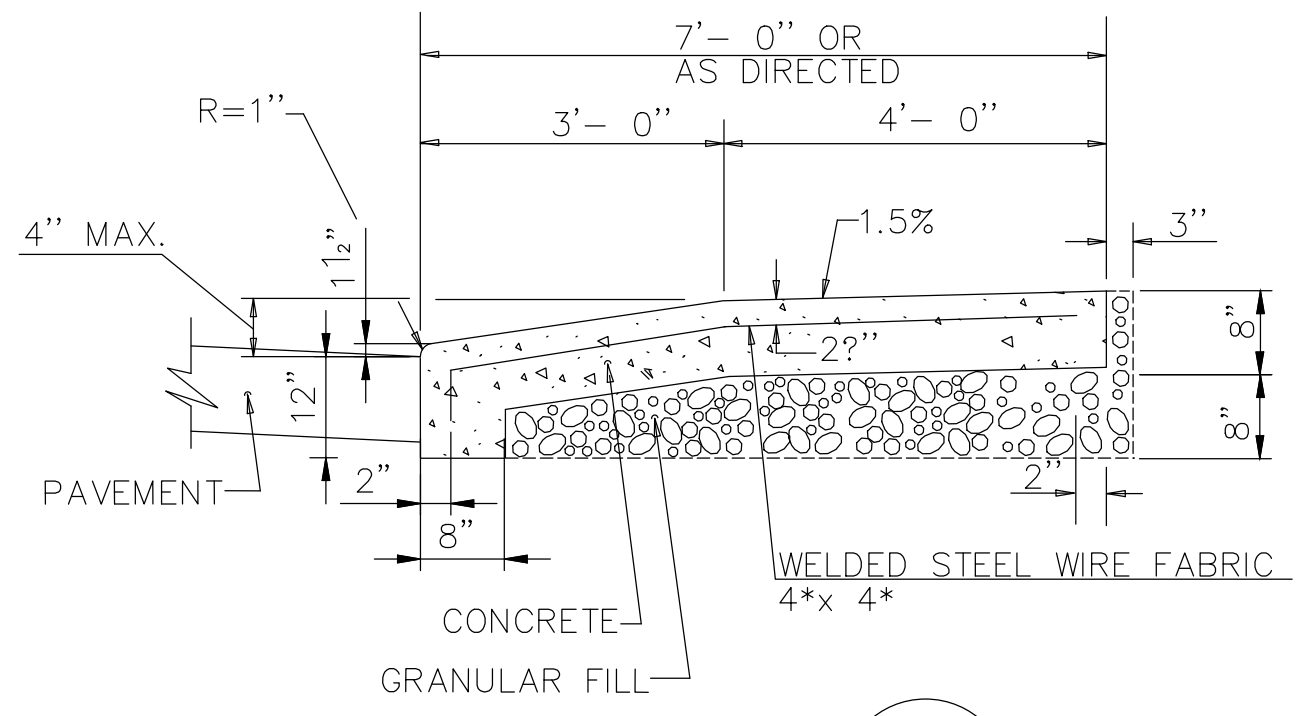
- GENERAL NOTES:
- DRIVEWAY ENTRANCE SHALL BE A MINIMUM OF 12' WIDE, EXCLUDING CURBING WHEN PRESENT.
  - WELDED WIRE FABRIC MATS WITH REINFORCING AT CLOSER SPACING MAY BE USED.
  - SURFACE HMA S0.375 TO BE PLACED IN TWO EQUAL LIFTS FOR BOTH RESIDENTIAL AND COMMERCIAL DRIVEWAYS.



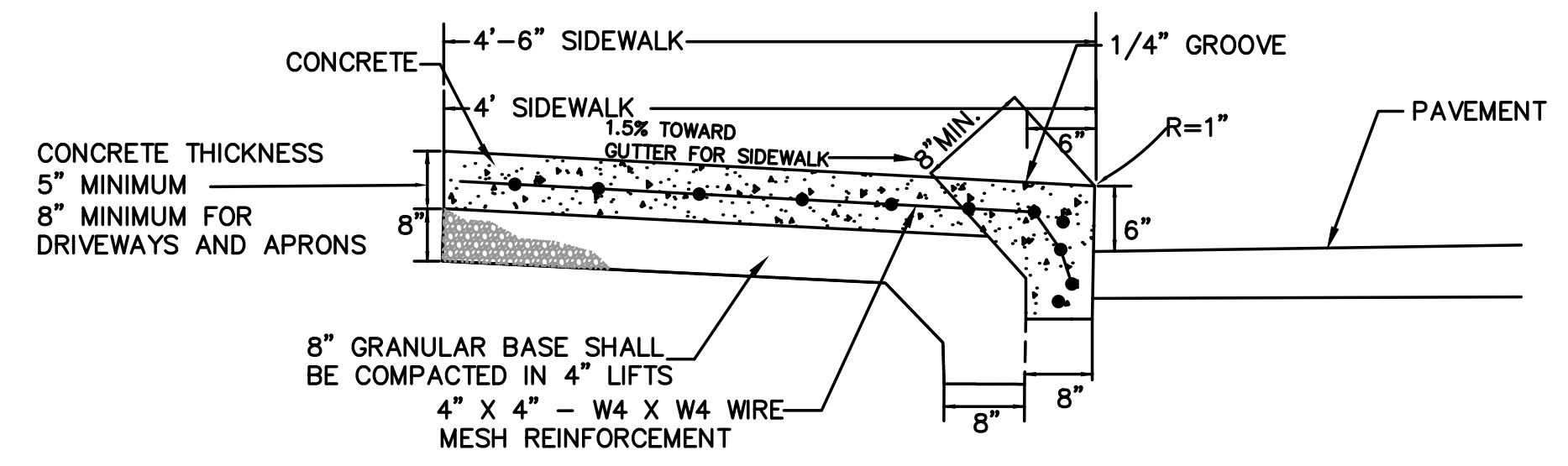
SECTION A-A



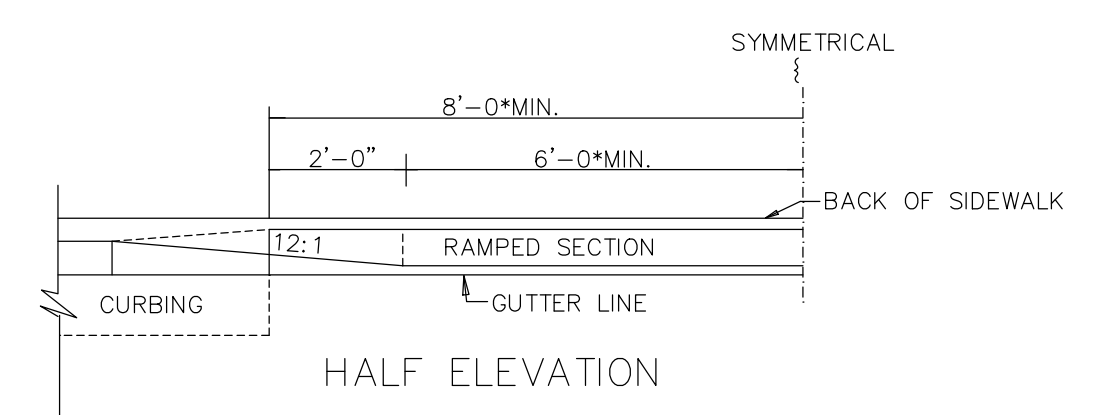
PLAN



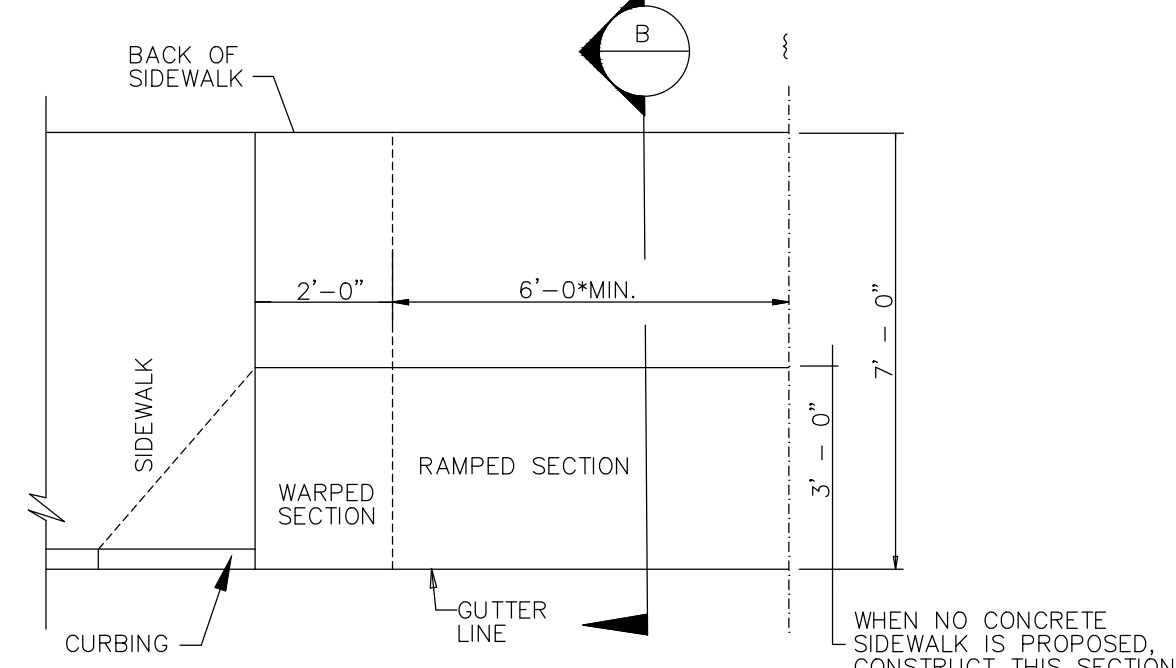
SECTION B



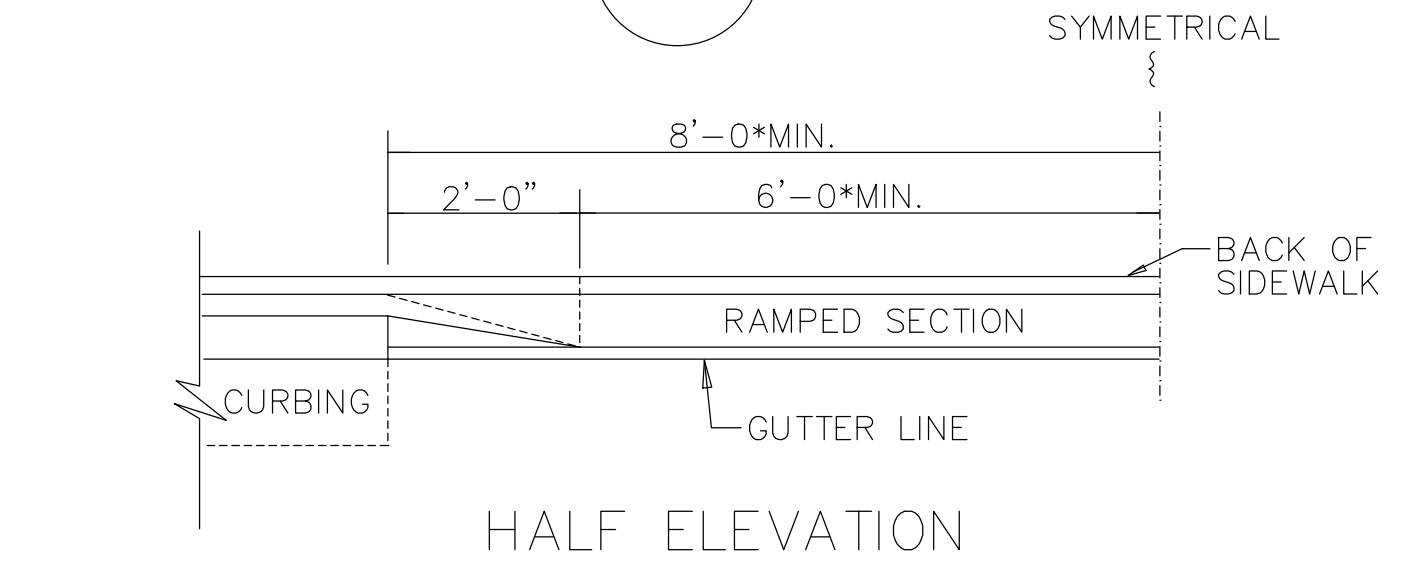
SECTION B-B  
CONCRETE SIDEWALK AND MONOLITHIC CURB  
SCALE: N.T.S.



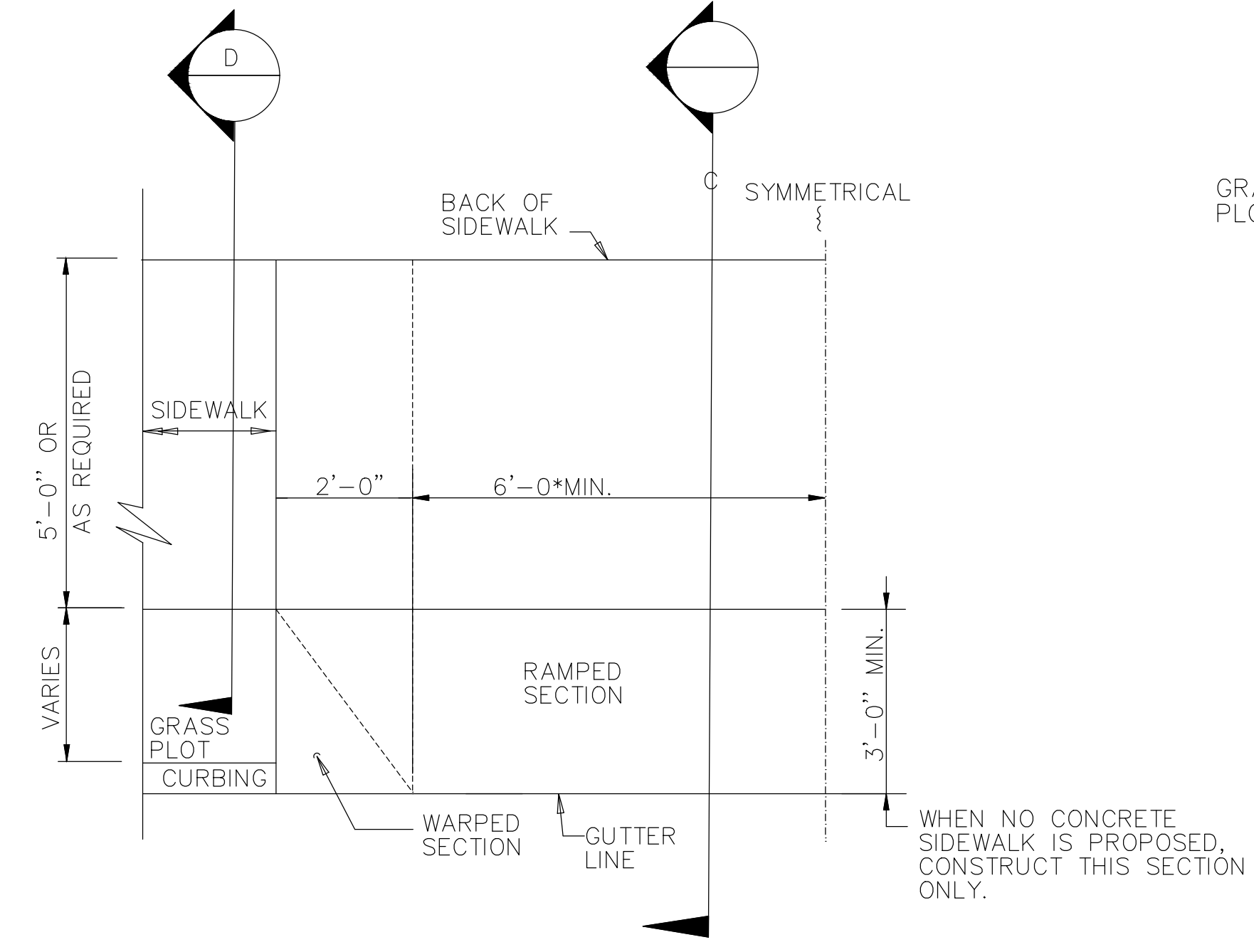
HALF ELEVATION



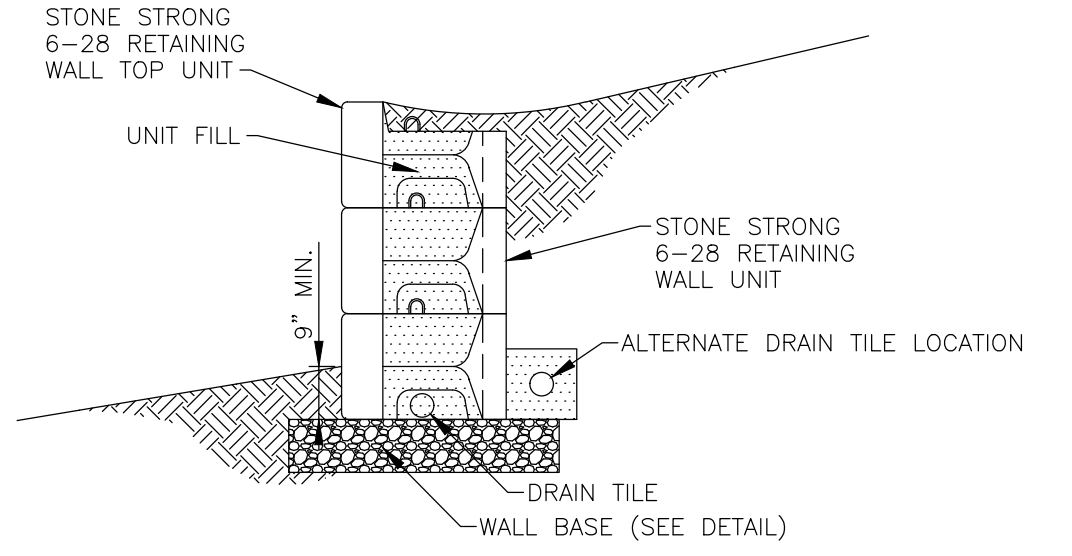
HALF PLAN OF CONCRETE DRIVEWAY RAMP WHERE SIDEWALK ADJOINS CURBING



HALF ELEVATION

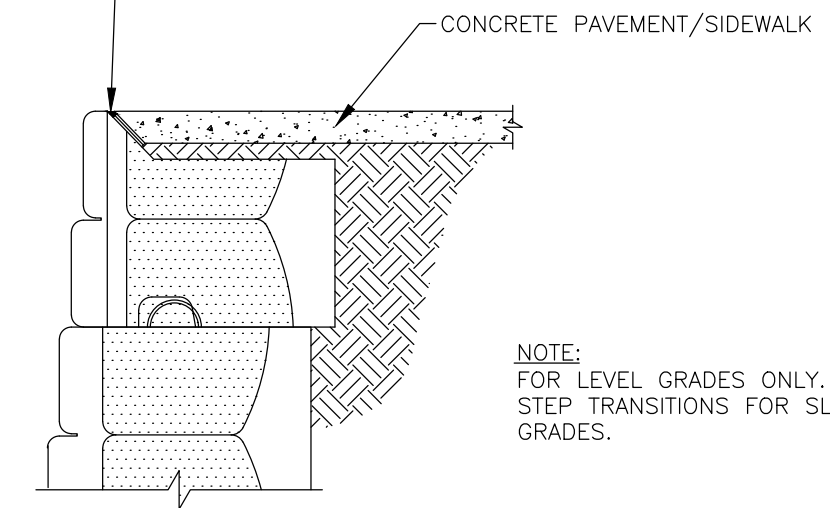


HALF PLAN OF CONCRETE DRIVEWAY RAMP WHERE CURB IS SEPARATED FROM SIDEWALK BY GRASS PLOT

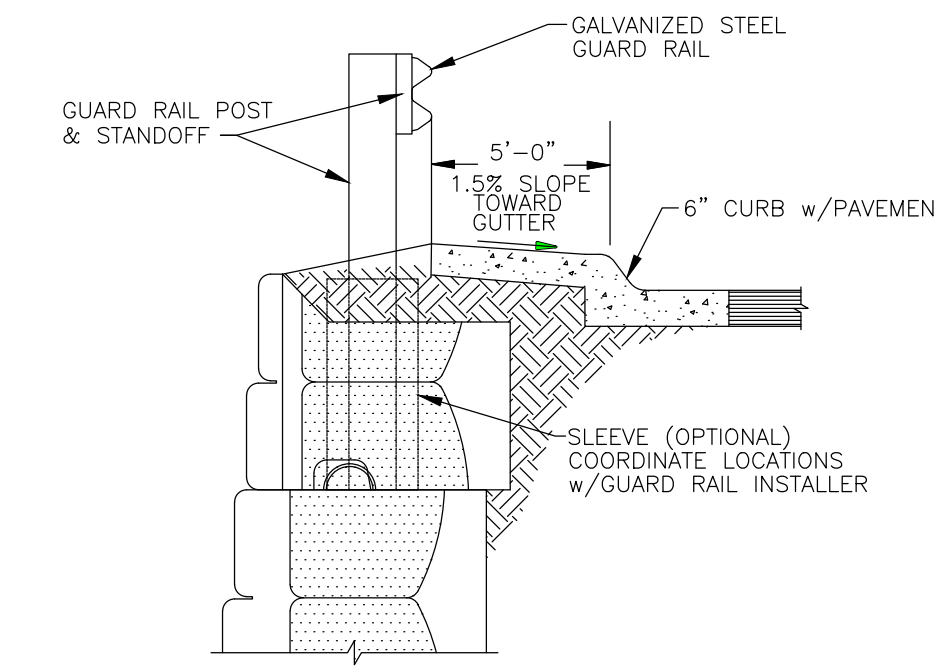


USE STONE STRONG SYSTEMS OR EQUAL  
VERTICAL FACE  
6-28 GRAVITY WALL CROSS SECTION  
NOT TO SCALE

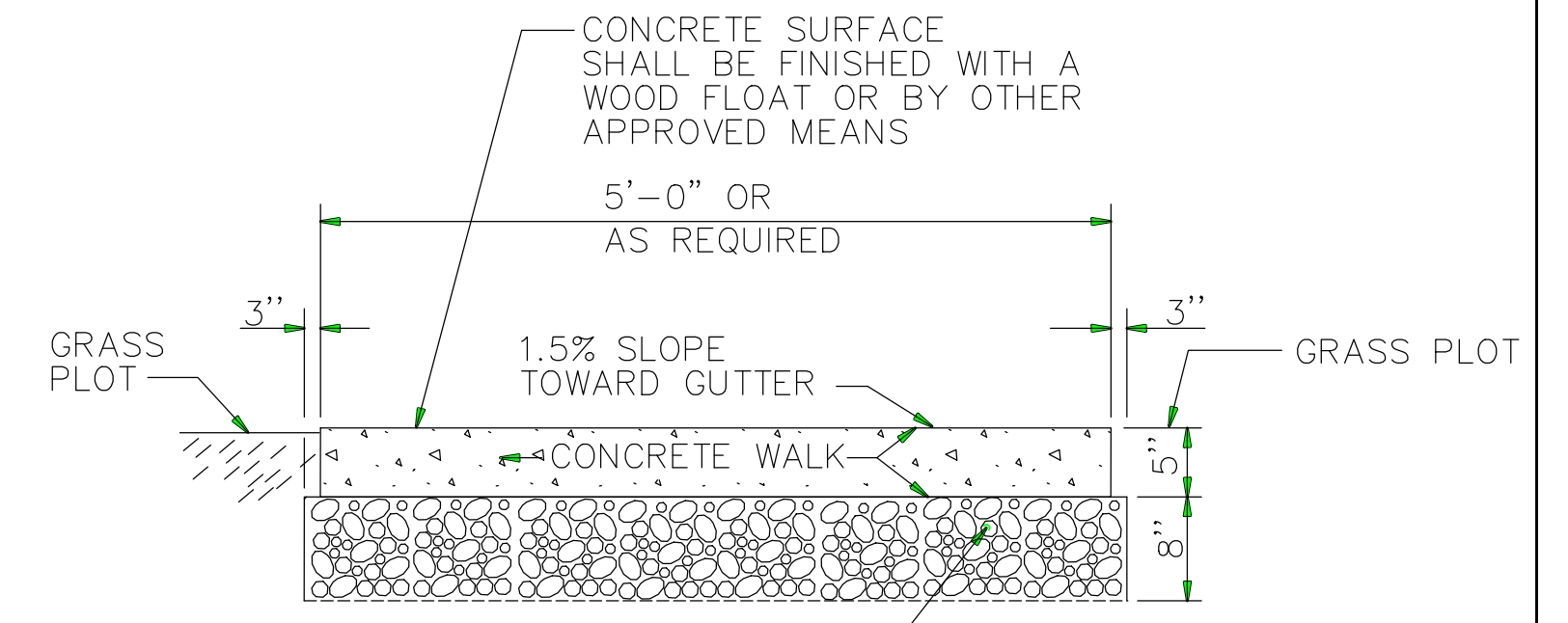
- NOTES:
- DRAIN TILE MAY BE ELIMINATED AT THE DISCRETION OF THE SITE ENGINEER.
  - DAYLIGHT DRAIN TILE AT LOW POINTS THROUGH WALL FACE OR AT ENDS; MAXIMUM SPACING 100 FEET OR PER SITE CONDITIONS.



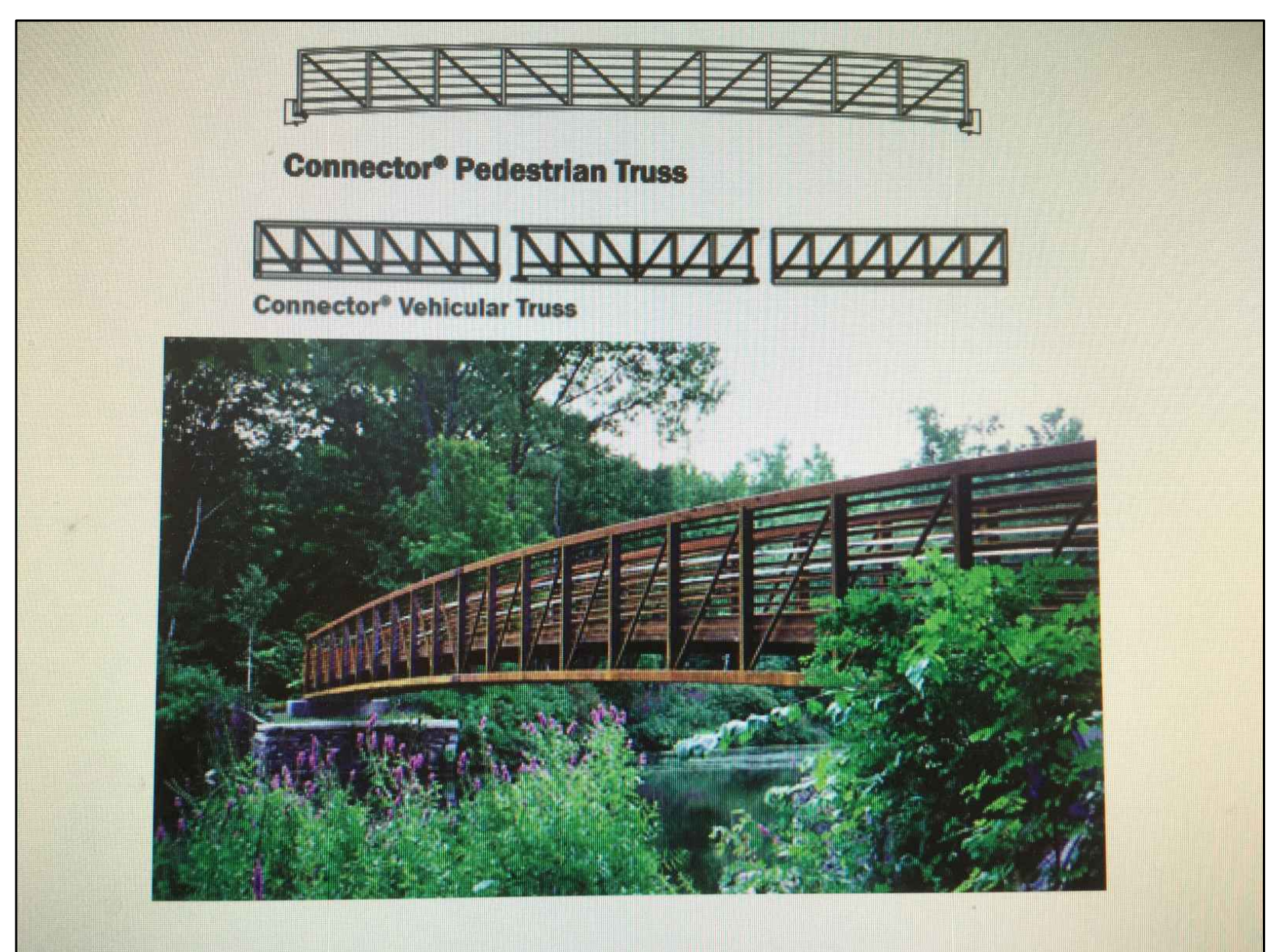
USE STONE STRONG SYSTEMS OR EQUAL  
TOP OF WALL w/SIDEWALK  
NOT TO SCALE



USE STONE STRONG SYSTEMS OR EQUAL  
WALL w/GUARD RAIL  
NOT TO SCALE

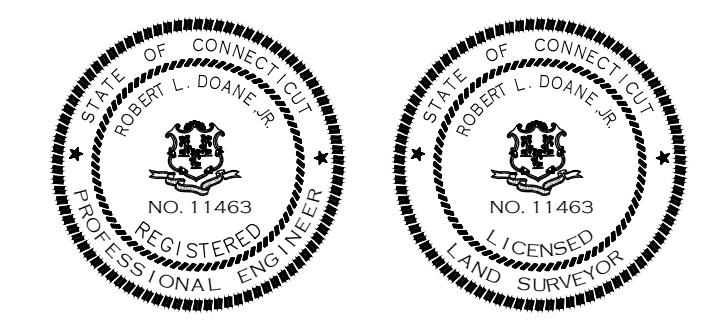


SECTION A-A  
5' WIDE CONCRETE SIDEWALK WITH GRASS PLOT



USE CONTECH ENGINEERED SOLUTIONS  
CONNECTOR PEDESTRIAN TRUSS OR EQUAL  
NOT TO SCALE

ROBERT L. DOANE, JR.  
CONN. P.E. & L.S. LIC. NO. 11463



RIVER ROAD PROPOSED SIDEWALK CONSTRUCTION

**DOANE ENGINEERING**  
CIVIL ENGINEERING AND LAND SURVEYING  
P.O. BOX 113 CENTERBROOK, CONNECTICUT 06409  
TEL: (860)767-0138, FAX: (860)767-9104

SITE PLAN  
PREPARED FOR  
TOWN OF ESSEX  
RIVER ROAD, ESSEX, CONNECTICUT

SCALE: AS NOTED	DATE: 02/24/23	SHEET NO.: 3 OF 3	IDENT. NO.:
--------------------	-------------------	----------------------	-------------