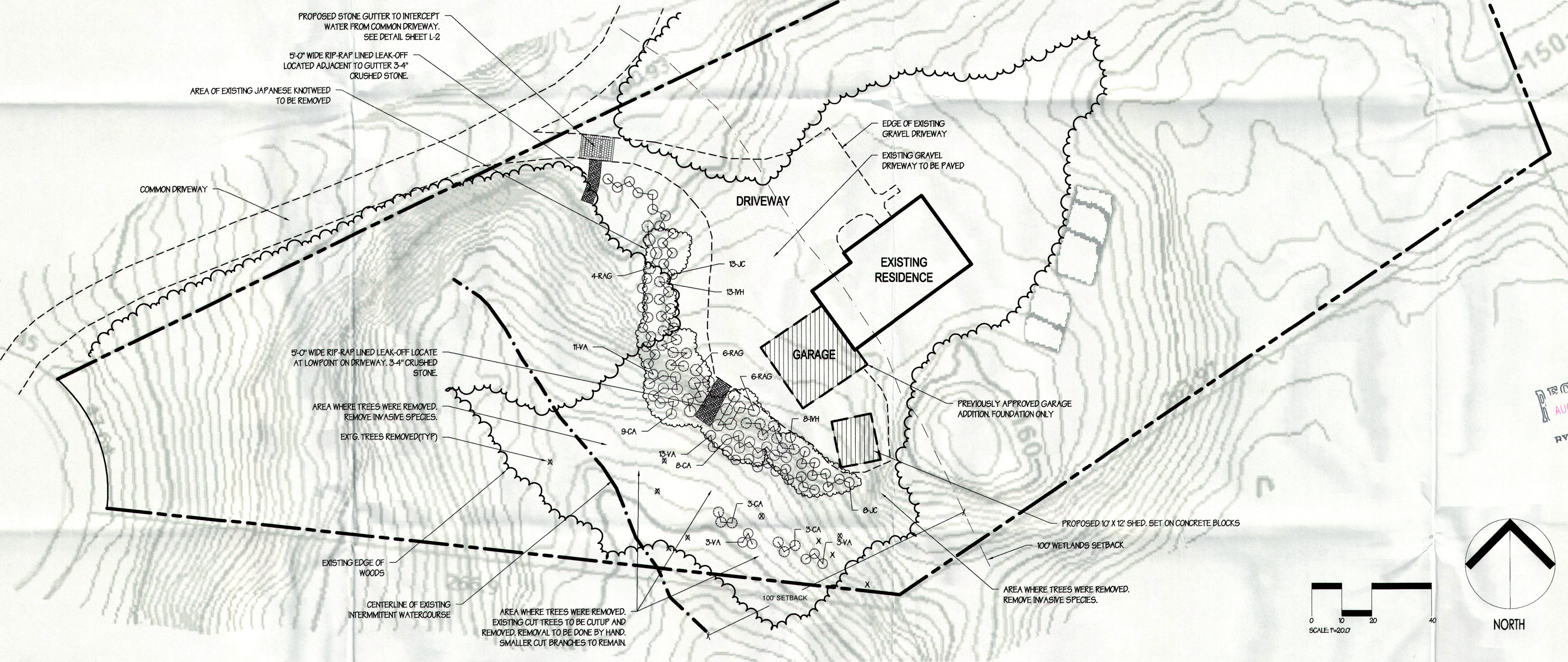


PLANT LIST

CODE	QTY	LATIN NAME	COMMON NAME	SIZE	ROOT	NOTES
CA	23	CLETHRA ALNIFOLIA	SUMMERSWEET	18-24" HT.	CONT	NATIVE
IVH	21	ITEA VIRGINICA 'HENRY'S GARNET'	VIRGINIA SWEETSPIRE	18-24" HT.	CONT	NATIVE
JC	23	JUNIPERUS CHINENSIS	COMMON JUNIPER	18-24" SPREAD	CONT	NATIVE
RAG	16	RHUS AROMATICA 'GRO LOW'	GRO-LO SMOOTH SUMAC	18-24" SPREAD	CONT	NATIVE
VA	30	VACCINIUM ANGUSTIFOLIUM	LOWBUSH BLUEBERRY	15-18" HT.	CONT	NATIVE



GENERAL NOTES

- EXISTING TOPOGRAPHY INFORMATION TAKEN FROM TOWN OF ESSEX GIS SYSTEM. PROPERTY BOUNDARY TAKEN FROM MAP ENTITLED "WORKSHEET PREPARED FOR MATTHEW JOHNSON #11 FIFE COURT, ESSEX CT" BY HALLSLEY, PEARSON & CASSIDY, ROCKY HILL CT DATED OCT. 11, 2007. ADDITIONAL INFORMATION ADDED FROM AERIAL PHOTOGRAPHY PROVIDED BY ROCK SPRING DESIGN GROUP.
- VERIFY LOCATIONS, ELEVATIONS AND DIMENSIONS IN FIELD PRIOR TO CONSTRUCTION. NOTIFY THE OWNER OF ANY DISCREPANCIES.
- CONTACT "CALL-BEFORE-YOU-DIG" AT 800-322-4455, PRIOR TO BEGINNING ANY SITE WORK ACTIVITIES.
- INSTALL EROSION CONTROLS AND TREE PROTECTION PRIOR TO ANY EXCAVATION AND/OR CLEARING.
- REMOVAL AND DISPOSAL OF ALL MATERIALS TO COMPLY WITH ANY AND ALL STATE AND/OR LOCAL CODES.
- EXISTING PLANT MATERIAL TO BE SAVED AND PROTECTED WHERE POSSIBLE.
- THE CONTRACTOR IS RESPONSIBLE FOR SECURING ALL CONSTRUCTION PERMITS AND LICENSES REQUIRED TO COMPLETE THE WORK. ALL BONDS AND INSURANCE WILL BE THE RESPONSIBILITY OF THE CONTRACTOR.
- THE CONTRACTOR IS RESPONSIBLE FOR REPAIR OF ALL DAMAGE AND DISTURBANCES WHICH MAY OCCUR AS A RESULT OF HIS WORK WITHIN OR OUT OF THE LIMITS OF WORK AREA.
- THE CONTRACTOR SHALL BE AWARE OF ALL SUBSURFACE DRAINAGE AND ALL UTILITIES. PROTECT LINES FROM DAMAGE AND DEBRIS. THE CONTRACTOR SHALL BE RESPONSIBLE FOR REPAIR OF ALL DAMAGED LINES AT NO ADDITIONAL COST TO THE OWNER.
- FINAL GRADE IN ALL CASES SHALL SLOPE AWAY FROM THE BUILDING A MINIMUM OF 1/4" PER FOOT AND ALL PAVED AREAS SHALL HAVE A MINIMUM WASH OF 1/8" PER FOOT.
- ALL DISTURBED AREAS SHALL BE TOPSOILED, RESEEDED AND STABILIZED.

JAPANESE KNOTWEED REMOVAL

- NOTIFY OWNER OR LANDSCAPE ARCHITECT AND TOWN OF ESSEX ZONING ENFORCEMENT OFFICER 72 HOURS MINIMUM IN ADVANCE OF STARTING REMOVAL OPERATIONS.
- ALL INVASIVE REMOVALS TO BE DONE BY HAND WITH HAND TOOLS.
- FIRST REMOVAL TO BE COMPLETED EITHER IN THE FALL PRIOR TO FIRST FROST OR LATE SPRING AFTER PLANTS HAVE SUBSTANTIALLY GROWN.
- CUT DOWN AND REMOVE THE EXISTING CANES. JAPANESE KNOTWEED WILL NOT REGROW FROM CUT CANES, SO ITS IMPORTANT TO TRIM DOWN ALL STANDING KNOTWEED. CUT OFF THE CANES AS CLOSE TO THE GROUND AS POSSIBLE, THEN REMOVE THE CUT PIECES FROM THE AREA AND DISPOSE OF BY BURNING.
- APPLY GLYPHOSATE WEED KILLER. GLYPHOSATE WEED KILLER, LIKE ROUNDUP TO THE REMAINING STALKS AND ANY REMAINING GROWTH. SPRAY THE WEED KILLER ONTO THE PLANTS IMMEDIATELY AFTER CUTTING DOWN THE CANE.
- WAIT 7 DAYS BEFORE PULLING THE WEEDS AFTER USING WEED KILLER. AFTER APPLYING GLYPHOSATE, DONT DISTURB THE PLANTS FOR AT LEAST 7 DAYS. ALLOW THE WEED KILLER TO PENETRATE THE ROOT ZONE OF THE PLANT. AVOID CUTTING THE CANES OR MOWING DOWN THE PLANT FOR A WEEK, THEN PULL OUT AND REMOVE ALL THE DEAD KNOTWEED, TAKING CARE TO DIG OUT THE ALL DEEP ROOTS.
- MONITOR AREA AND CUT DOWN ANY NEW GROWTH WEEKLY. CONTINUALLY CUTTING THE REMAINING ABOVEGROUND PORTIONS OF JAPANESE KNOTWEED TO WEAKEN THE PLANT AND CAUSE IT TO DIE. CUT THE PLANTS DOWN AS SHORT AS POSSIBLE EACH WEEK TO HELP KILL THEM OFF.
- SECOND REMOVAL PRIOR TO FIRST HARD FROST OR LATER SPRING.
- APPLY GLYPHOSATE WEED KILLER. GLYPHOSATE WEED KILLER, LIKE ROUNDUP TO THE REMAINING STALKS AND ANY REMAINING GROWTH. SPRAY THE WEED KILLER ONTO THE PLANTS IMMEDIATELY AFTER CUTTING DOWN THE CANE.
- WAIT 7 DAYS BEFORE PULLING THE WEEDS AFTER USING WEED KILLER. AFTER APPLYING GLYPHOSATE, DONT DISTURB THE PLANTS FOR AT LEAST 7 DAYS. ALLOW THE WEED KILLER TO PENETRATE THE ROOT ZONE OF THE PLANT. AVOID CUTTING THE CANES OR MOWING DOWN THE PLANT FOR A WEEK, THEN PULL OUT AND REMOVE ALL THE DEAD KNOTWEED, TAKING CARE TO DIG OUT THE ALL DEEP ROOTS.
- REPEAT AS NECESSARY TO COMPLETELY REMOVE ALL KNOTWEED.
- INSTALL RESTORATION PLANTINGS AFTER KNOTWEED REMOVAL AND ERADICATION IS COMPLETED.

PLANTING NOTES

- NOTIFY OWNER OR LANDSCAPE ARCHITECT 72 HOURS MINIMUM IN ADVANCE OF STARTING PLANTING OPERATIONS. RECEIVE APPROVAL FOR LAYOUT OF ALL BED LINES AND MATERIAL LOCATIONS PRIOR TO INSTALLATION.
- ALL PLANTINGS ARE TO BE INSTALLED BY A QUALIFIED LANDSCAPE CONTRACTOR.
- THE LANDSCAPE ARCHITECT RESERVES THE RIGHT TO REJECT INFERIOR PLANT MATERIALS AND SUBSTITUTIONS. THE LANDSCAPE ARCHITECT IS WILLING TO MAKE TWO TRIPS TO SUPPLIERS TO REVIEW AND APPROVE MATERIALS. PREVIOUSLY UNAPPROVED MATERIALS MAY BE REJECTED AT THE SITE. MINIMALLY, ALL MATERIALS WILL CONFORM TO THE "AMERICAN STANDARD FOR NURSERY STOCK" (ANSI Z601 - 2004) OF THE AMERICAN NURSERY & LANDSCAPE ASSOCIATION.
- BE AWARE OF ALL UNDERGROUND UTILITIES PRIOR TO ANY PLANTING OPERATIONS. CONTACT "CALL BEFORE YOU DIG" PRIOR TO EXCAVATION.
- MULCH ALL BEDS AND PLANTING AREAS SHOWN AS CONTINUOUS WITH SHREPPED BARK MULCH. SAMPLE TO BE SUBMITTED TO LANDSCAPE ARCHITECT FOR APPROVAL.
- ALL PLANT MATERIAL SHALL BE GUARANTEED BY THE CONTRACTOR TO BE IN GOOD, HEALTHY AND FLOURISHING CONDITION FOR A PERIOD OF TWO YEARS FROM THE DATE OF ACCEPTANCE. THE CONTRACTOR SHALL REPLACE, AS SOON AS WEATHER AND SEASONAL CONDITIONS PERMIT, ALL DEAD PLANTS AND ALL PLANTS NOT IN A VIGOROUS, THRIVING CONDITION, AS DETERMINED BY THE LANDSCAPE ARCHITECT DURING, AND AT THE END OF THE GUARANTEE PERIOD. WARRANTY REPLACEMENT WILL BE PROVIDED AT NO COST TO THE OWNER AND INCLUDE MATERIALS AND LABOR. CONTRACTOR IS RESPONSIBLE FOR REPAIR OF ANY DAMAGE INCURRED DURING REPLACEMENT OF WARRANTY MATERIALS.
- SHOULD THERE BE A DISCREPANCY BETWEEN PLANT QUANTITIES SHOWN ON THE PLANT LIST & THE PLAN, NOTIFY THE LANDSCAPE ARCHITECT.
- ALL DISTURBED AREAS TO BE RESTORED BY REMOVING UNSUITABLE SOILS, LOOSENING EXISTING SUBSOIL, ADDING NEW TOPSOIL, RAKING AND SEEDING.
- DO NOT ADD FERTILIZER TO PLANTING SOIL FOR FALL PLANTINGS.
- FOR CONTAINER GROWN SHRUBS, PULL OUT ROOTS FROM OUTER LAYER OF POTTING SOIL, CUT ANY CIRCLING ROOTS.
- PROPOSED PLANTINGS TO BE INSTALLED AFTER ERADICATION OF INVASION SPECIES.
- ALL PLANTINGS TO BE FROM A NURSERY SPECIALIZING IN NATIVE PLANTINGS AND RESTORATION.
- ALL PLANT MATERIALS TO BE CONSERVATION GRADE.



15 Rock Spring Road
Trumbull, CT 06611
Phone: 203.268.6979
Fax: 203.261.2170
info@rockspringdesign.com

NOTES

© ROCK SPRING DESIGN GROUP, LLC
ALL RIGHTS RESERVED

IT IS A VIOLATION OF THE LAW FOR ANY PERSON, UNLESS ACTING UNDER THE DIRECTION OF A LICENSED LANDSCAPE ARCHITECT TO ALTER AN ITEM ON THIS PLAN IN ANY WAY WITHOUT EXPRESS WRITTEN CONSENT OF THE ORIGINAL DRAWING PREPARER. IF AN ITEM BEARING THE SEAL OF A LANDSCAPE ARCHITECT IS ALTERED THE ALTERING LANDSCAPE ARCHITECT SHALL AFFIX TO THIS ITEM THE SEAL AND THE NOTATION "ALTERED BY" FOLLOWED BY HIS SIGNATURE, SEAL AND THE DATE OF SUCH ALTERATION AND A SPECIFIC DESCRIPTION OF THE ALTERATION.

NO	DATE	ISSUED/ REVISION

THIS DRAWING IS THE PROPERTY OF ROCK SPRING DESIGN GROUP, LLC ANY UNAUTHORIZED USE, IN PART OR IN WHOLE IS STRICTLY PROHIBITED. ©

Client:
Matthew Johnson
11 Fife Court
Ivoryton, CT

Project:
Proposed Shed and Wetlands Buffer Planting

Drawing Title:
PROPOSED LANDSCAPE PLAN AND DETAILS

Scale: 1"=20'
Date: 8/30/2020
Drawn By: DWV
Project No: 19-001

Drawing No:

L-1

