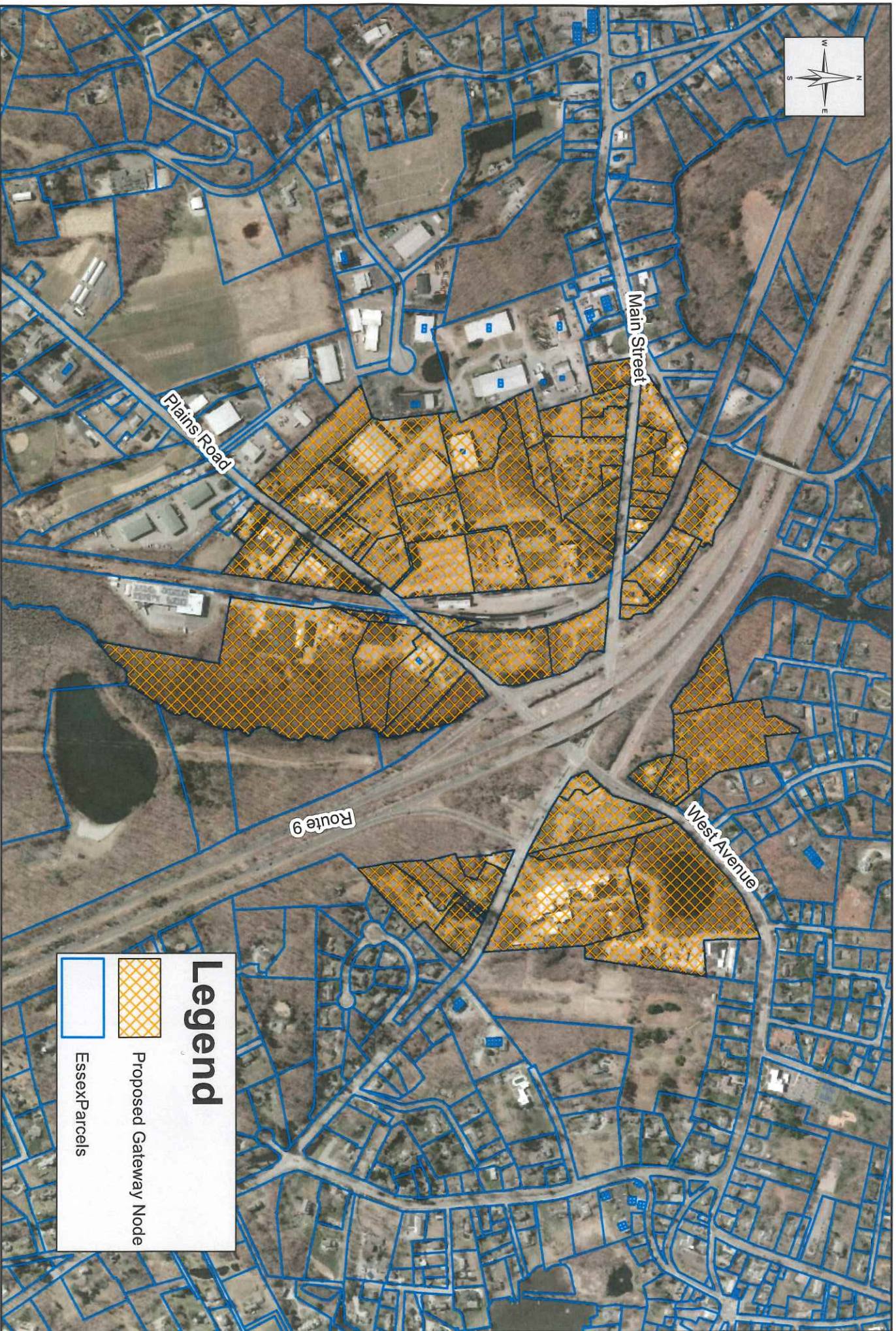


Potential Route 9 Gateway Overlay Zone - December 2019 Draft



Legend

-  Proposed Gateway Node
-  EssexParcels

Map produced 12/20/2019 by Essex Planning Commission. Map is for planning purposes only and contains no authoritative positioning information. Data sources include RiverCOG, UConn CLEAR, and Town of Essex.