

File copy



**NEW ENGLAND ENVIRONMENTAL SERVICES**  
*Wetland Consulting Specialists Since 1983*

May 13, 2022

Ms. Carey R. Duques, AICP, CZEO  
Land Use Official/Zoning Enforcement Officer  
Town of Essex  
29 West Avenue  
Essex, CT 06426

Re: 8 and 10 Benson Lane  
Essex, Connecticut

Dear Ms. Duques:

On May 5, 2022 I reviewed the wetlands at 8 and 10 Benson Lane in Essex. The landowners (Marc and Liz Schnitzer) are interested in enhancing the ecological integrity of the wetlands.

The following is a list of the exotic invasive plants which I believe should be eradicated from the wetlands:

1. *Rosa multiflora* (Multiflora Rose)
2. *Lonicera maackii* (Honeysuckle)
3. *Euonymus alatus* (Burning Bush)
4. *Phragmites australis* (Common Reed)
5. *Lythrum salicaria* (Purple Loosestrife)

The approximate location of the exotic invasive plants are shown the attached site plan.

The following is the procedure for the eradication of the exotic invasive plants:

1. Multiflora Rose (approximately 10 plants) and Burning Bush (2 plants). The plants will be cut 3 inches from the ground surface. The stumps will be painted with concentrated glyphosate. The cut plants will be removed from the wetlands by hand and removed from the site.
2. The Honeysuckle vines will be hand pulled.
3. The Purple Loosestrife will be hand pulled.
4. The Phragmites will be cut with a weed whacker. The Phragmites will need to be cut 4 to 6 times during the year.

I will supervise the eradication of the exotic invasive plants. The landscape contractor is Will Grendziszewski.

Ms. Carey R. Duques, AICP, CZEO  
Land Use Official/Zoning Enforcement Officer  
Town of Essex  
Re: 8 and 10 Benson Lane  
Essex, Connecticut  
May 13, 2022  
Page 2

I discussed the project with Bob Doane. Bob recommended that I send you an outline for the eradication of the exotic invasive plants. Can you provide administrative authorization for the eradication of the exotic invasive plants.

If you have any questions, feel free to contact me.

Respectively Submitted,

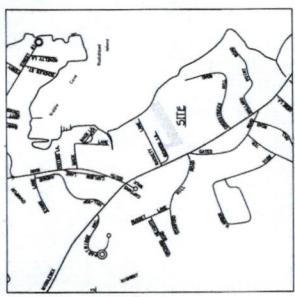
New England Environmental Services



R. Richard Snarski  
Professional Wetlands Scientist #1391  
Registered Professional Soil Scientist  
Consulting Botanist

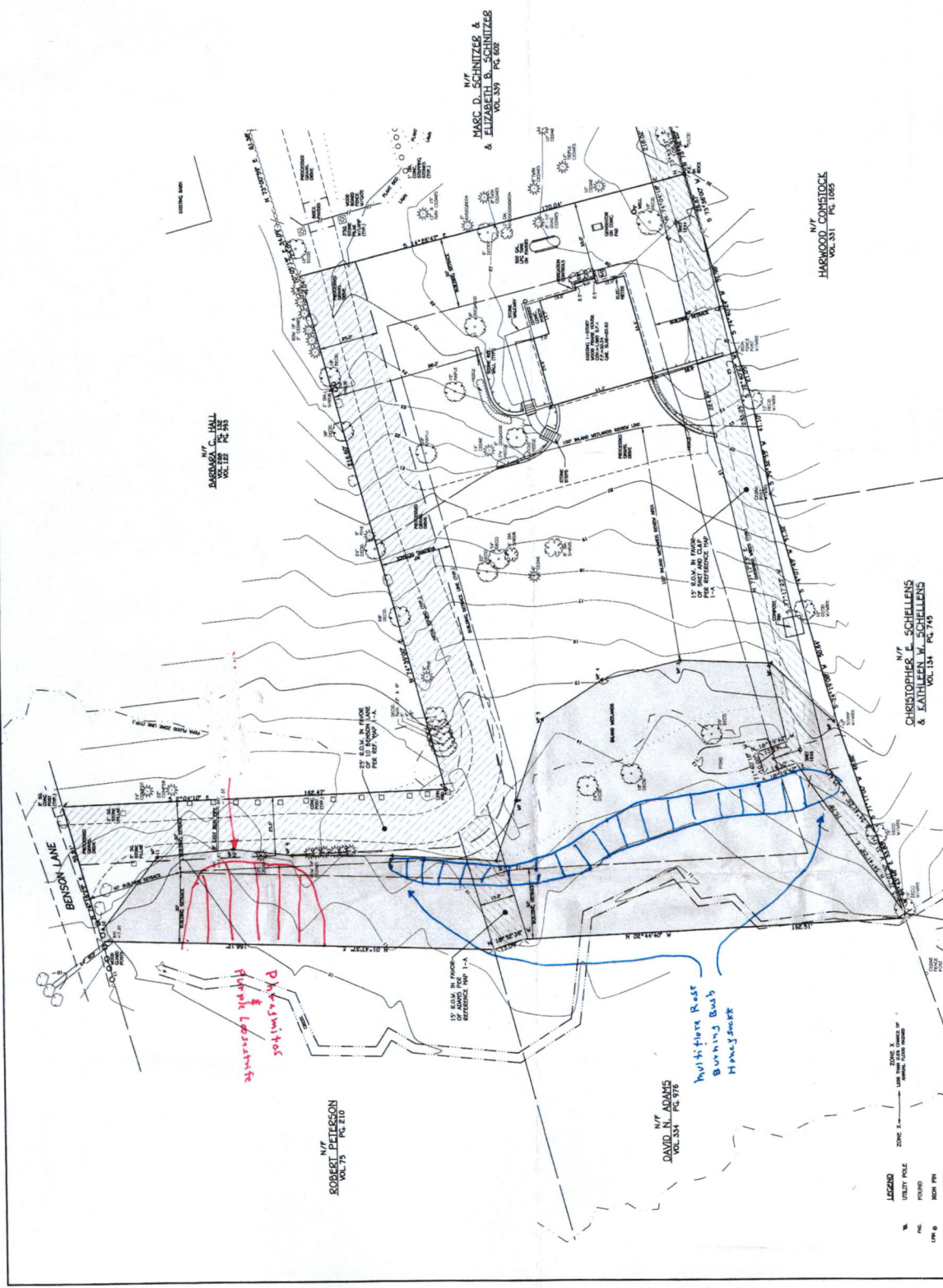
RRS/srh





ZONING DATA TABLE	
ITEM	PROPOSED
MIN. LOT AREA	60,000 S.F.
MIN. LOT WIDTH	100' 0" S.F.
MIN. FRONT SETBACK	10' 0" S.F.
MIN. SIDE SETBACK	5' 0" S.F.
MIN. REAR SETBACK	5' 0" S.F.
MIN. FRONT YARD SETBACK	5' 0" S.F.
MIN. SIDE YARD SETBACK	5' 0" S.F.
MIN. REAR YARD SETBACK	5' 0" S.F.
MIN. MAX. BLDG. HEIGHT	35' 0" S.F.

- NOTES: REFERENCES ARE MADE TO THE FOLLOWING MAPS:
- PROPOSED EASEMENTS TO BE GRANTED TO SOUTHERN NEW ENGLAND PROPERTY OF COLONIAL TRADING COMPANY, INC., ESSEX, CONNECTICUT. SCALE 1"=40'. DATE: MARCH 31, 1977. BY: ROBERT C. COBURN.
  - PROPOSED EASEMENTS TO BE GRANTED TO SOUTHERN NEW ENGLAND PROPERTY OF COLONIAL TRADING COMPANY, INC., ESSEX, CONNECTICUT. SCALE 1"=40'. DATE: MARCH 31, 1977. BY: ROBERT C. COBURN.
  - PROPOSED EASEMENTS TO BE GRANTED TO SOUTHERN NEW ENGLAND PROPERTY OF COLONIAL TRADING COMPANY, INC., ESSEX, CONNECTICUT. SCALE 1"=40'. DATE: MARCH 31, 1977. BY: ROBERT C. COBURN.
  - PROPOSED EASEMENTS TO BE GRANTED TO SOUTHERN NEW ENGLAND PROPERTY OF COLONIAL TRADING COMPANY, INC., ESSEX, CONNECTICUT. SCALE 1"=40'. DATE: MARCH 31, 1977. BY: ROBERT C. COBURN.
  - PROPOSED EASEMENTS TO BE GRANTED TO SOUTHERN NEW ENGLAND PROPERTY OF COLONIAL TRADING COMPANY, INC., ESSEX, CONNECTICUT. SCALE 1"=40'. DATE: MARCH 31, 1977. BY: ROBERT C. COBURN.
  - PROPOSED EASEMENTS TO BE GRANTED TO SOUTHERN NEW ENGLAND PROPERTY OF COLONIAL TRADING COMPANY, INC., ESSEX, CONNECTICUT. SCALE 1"=40'. DATE: MARCH 31, 1977. BY: ROBERT C. COBURN.
  - PROPOSED EASEMENTS TO BE GRANTED TO SOUTHERN NEW ENGLAND PROPERTY OF COLONIAL TRADING COMPANY, INC., ESSEX, CONNECTICUT. SCALE 1"=40'. DATE: MARCH 31, 1977. BY: ROBERT C. COBURN.
  - PROPOSED EASEMENTS TO BE GRANTED TO SOUTHERN NEW ENGLAND PROPERTY OF COLONIAL TRADING COMPANY, INC., ESSEX, CONNECTICUT. SCALE 1"=40'. DATE: MARCH 31, 1977. BY: ROBERT C. COBURN.
  - PROPOSED EASEMENTS TO BE GRANTED TO SOUTHERN NEW ENGLAND PROPERTY OF COLONIAL TRADING COMPANY, INC., ESSEX, CONNECTICUT. SCALE 1"=40'. DATE: MARCH 31, 1977. BY: ROBERT C. COBURN.
  - PROPOSED EASEMENTS TO BE GRANTED TO SOUTHERN NEW ENGLAND PROPERTY OF COLONIAL TRADING COMPANY, INC., ESSEX, CONNECTICUT. SCALE 1"=40'. DATE: MARCH 31, 1977. BY: ROBERT C. COBURN.



PROPERTY SURVEY MAP  
PROPERTY OF  
**MARC D. SCHNITZER & ELIZABETH B. SCHNITZER**  
ESSEX, CONNECTICUT  
BENSON LANE  
DATE: APRIL 22, 1978  
SCALE: 1"=40'  
SHEET NO. 1 OF 1  
JOB NO. 210559  
REVISIONS:

ANGUS McDONALD & ASSOCIATES, INC.  
SINCE 1944  
P.O. BOX 100, NEW BRITAIN, CT 06101  
TELEPHONE: (860) 526-7700  
FAX: (860) 526-7700

LAND & MARINE SURVEYING  
ENGINEERING  
PLANNING

ANGUS I. McDONALD, JR.  
CONV. U.S. #71073.A  
THE MAP SHOWS THE BOUNDARY AND SETBACK LINES OF THE PROPERTY. THE MAP IS SUBSTANTIALLY CORRECT AS NOTED HEREIN.

REFERENCE MAPS:  
1. THE MAP SHOWS THE BOUNDARY AND SETBACK LINES OF THE PROPERTY. THE MAP IS SUBSTANTIALLY CORRECT AS NOTED HEREIN.  
2. THE MAP SHOWS THE BOUNDARY AND SETBACK LINES OF THE PROPERTY. THE MAP IS SUBSTANTIALLY CORRECT AS NOTED HEREIN.  
3. THE MAP SHOWS THE BOUNDARY AND SETBACK LINES OF THE PROPERTY. THE MAP IS SUBSTANTIALLY CORRECT AS NOTED HEREIN.

REMARKS: THIS MAP SHOWS THE BOUNDARY AND SETBACK LINES OF THE PROPERTY. THE MAP IS SUBSTANTIALLY CORRECT AS NOTED HEREIN.  
1. THE MAP SHOWS THE BOUNDARY AND SETBACK LINES OF THE PROPERTY. THE MAP IS SUBSTANTIALLY CORRECT AS NOTED HEREIN.  
2. THE MAP SHOWS THE BOUNDARY AND SETBACK LINES OF THE PROPERTY. THE MAP IS SUBSTANTIALLY CORRECT AS NOTED HEREIN.

THE MAP SHOWS THE BOUNDARY AND SETBACK LINES OF THE PROPERTY. THE MAP IS SUBSTANTIALLY CORRECT AS NOTED HEREIN.  
1. THE MAP SHOWS THE BOUNDARY AND SETBACK LINES OF THE PROPERTY. THE MAP IS SUBSTANTIALLY CORRECT AS NOTED HEREIN.  
2. THE MAP SHOWS THE BOUNDARY AND SETBACK LINES OF THE PROPERTY. THE MAP IS SUBSTANTIALLY CORRECT AS NOTED HEREIN.

LEGEND:  
DOTTED LINE: UTILITY POLE  
SOLID LINE: FENCE  
DASHED LINE: BORN PIPE  
DASHED LINE: BORN PIPE  
DASHED LINE: DRAINAGE  
DOTTED LINE: EXISTING CONTOURS  
DOTTED LINE: SURVEILLANCE  
DOTTED LINE: EDGE OF METAL/PILING, WAREHOUSE  
DOTTED LINE: RETAINING WALL  
DOTTED LINE: BOUNDARY/ADJACENT BOULDER/ADJACENT BOULDER