

BOKUM ROAD BUSINESS PARK

BOKUM ROAD
ESSEX, CONNECTICUT

JULY 2021

PERMIT DRAWINGS

INLAND WETLANDS AND WATERCOURSES COMMISSION SUBMISSION

PREPARED FOR:

GEORGE C. FIELD COMPANY, INC.

PREPARED BY:

Summer Hill

Civil Engineers & Land Surveyors, P.C.
60 Wall Street
P.O. Box 708
Madison, Connecticut 06443-0708
Telephone: (203) 245-0722

OWNER

GEORGE C. FIELD COMPANY, INC.
P.O. BOX 24
ESSEX, CONNECTICUT 06426
860-767-0420

APPLICANT

GEORGE C. FIELD COMPANY, INC.
P.O. BOX 24
ESSEX, CONNECTICUT 06426
860-767-0420

ZONING STANDARDS SCHEDULE				
LIMITED INDUSTRIAL (LI) DISTRICT				
SECTION	STANDARD	REQUIRED	EXISTING	PROVIDED
90E.	MINIMUM LOT AREA	80,000 SF	388,259 SF	388,259 SF
90E.	MINIMUM LOT WIDTH	200 FT	200 FT	200 FT
90E.	MINIMUM SETBACKS ⁽¹⁾			
	FRONT	75 FT	-	-
	SIDE	25 FT	-	35.5 FT
	REAR	50 FT	-	-
90E.	MAXIMUM BUILDING COVERAGE	25%	-	13%
90E.	MAXIMUM BUILDING HEIGHT	35 FT	-	24 FT

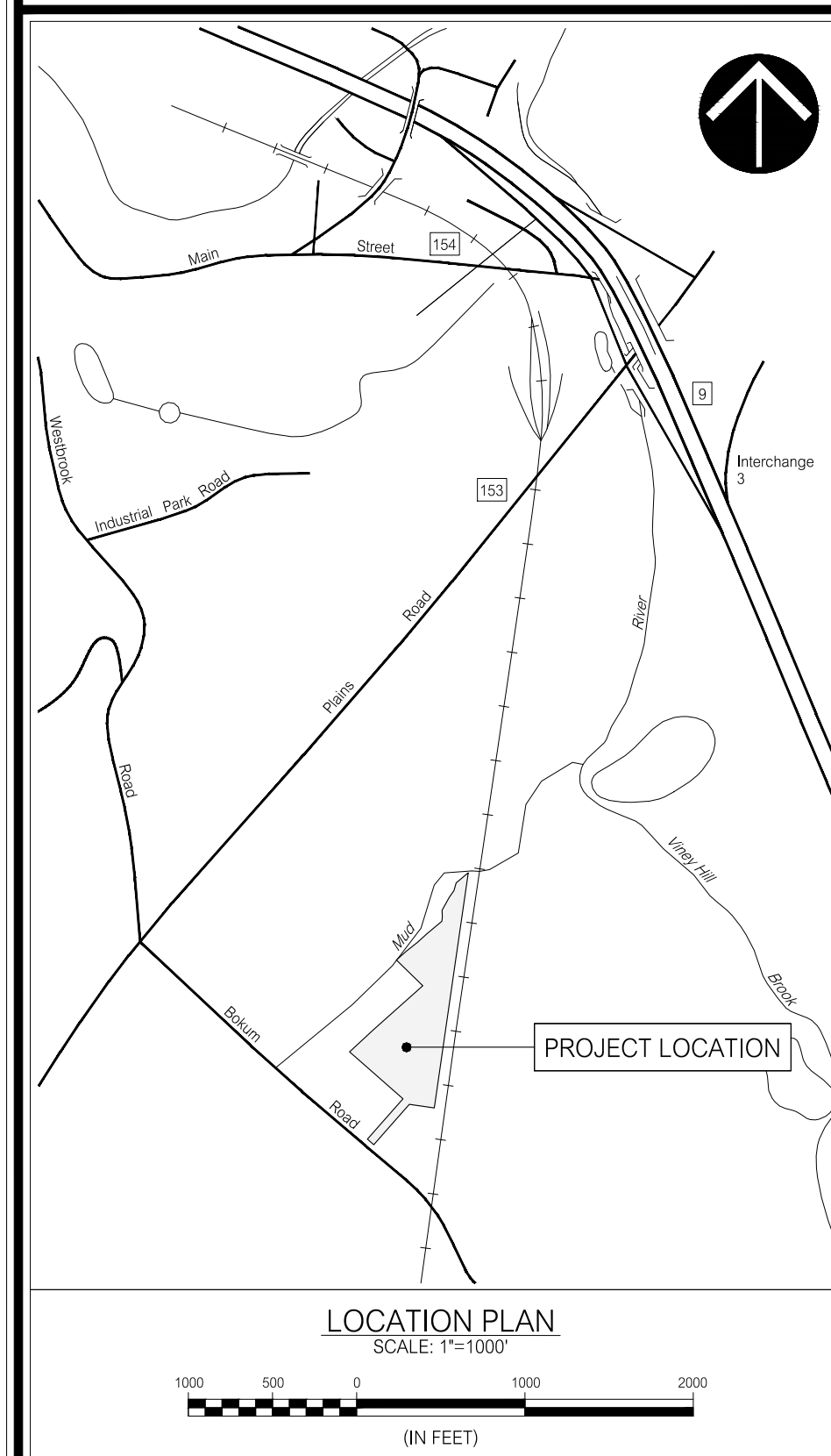
PARKING AND LOADING SPACE REQUIREMENTS:
 1 SPACE / EMPLOYEE X 30 EMPLOYEES = 30 PARKING SPACES
 1 TRUCK LOADING SPACE / 20,000 SF GROSS FLOOR AREA X 52,480 SF = 3 TRUCK LOADING SPACES

PARKING AND LOADING SPACES PROVIDED:
 52 PARKING SPACES
 3 TRUCK LOADING SPACES

NOTE:

1. NO SETBACK REQUIRED FROM A LOT LINE WHICH ABUTS A RAILROAD RIGHT-OF-WAY.

SCHEDULE OF DRAWINGS	
SHEET No.	TITLE
C0.1	TITLE SHEET
C0.2	GENERAL NOTES, ABBREVIATIONS AND LEGEND
C0.3	EROSION AND SEDIMENT CONTROL NOTES
C1.1	EXISTING CONDITIONS PLAN
C2.1	GENERAL PLAN
C2.2	SUBSURFACE SEWAGE DISPOSAL SYSTEM PLAN
C2.3	SITE LAYOUT PLAN
C3.1	DETAILS
C3.2	DETAILS
C3.3	DETAILS
C3.4	DETAILS
C3.5	DETAILS
C3.6	DETAILS
C3.7	CONNECTICUT DEPARTMENT OF TRANSPORTATION STANDARD DRAWINGS
C3.8	MASH W-BEAM HARDWARE
C3.9	METAL BEAM RAIL (R-B MASH) GUIDERAIL
	R-B END ANCHORAGE TYPE I AND II



MICHAEL J. OTT, P.E., L.S.
CT REGISTRATION No. 70082

REVISIONS:
 6-13-21 REVIEW COMMENTS
 6-15-21 MISCELLANEOUS

SHEET No.: C0.1

DATE

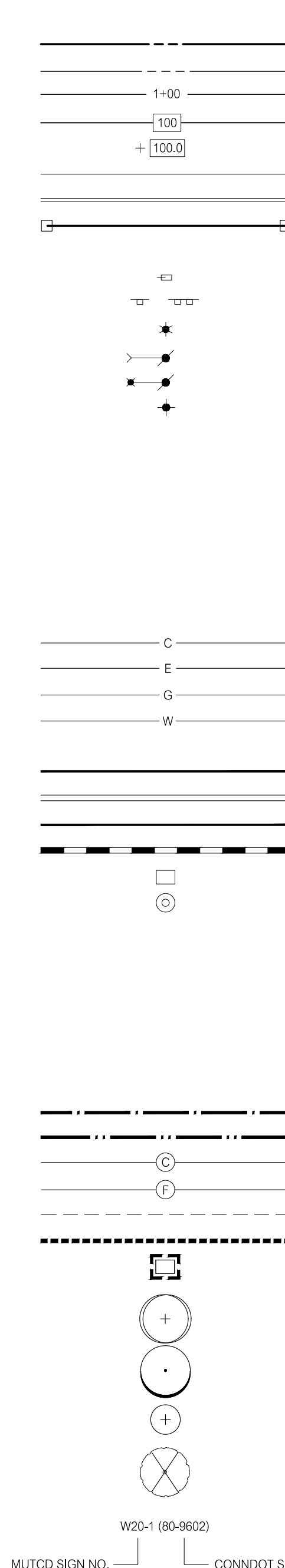
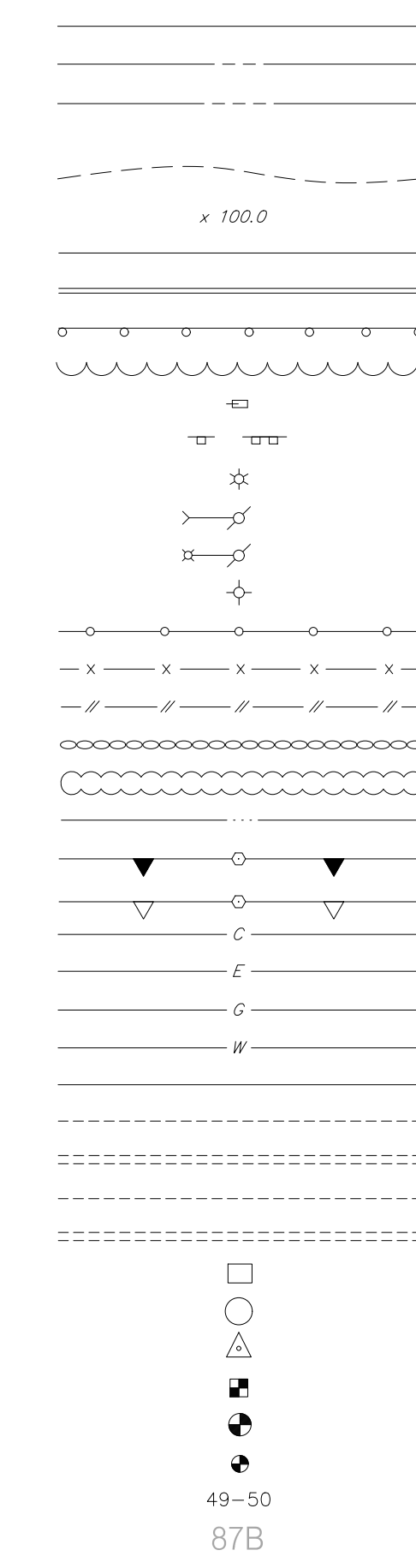
ABBREVIATIONS

AC	ACRE
ACP	ASBESTOS CEMENT PIPE
ACCM/P	ASPHALT COATED CORRUGATED METAL PIPE
A.S.D.B.E.	AS ORDERED BY ENGINEER
B&B	BALLED & BURLAPPED
BIT	BITUMINOUS
BM	BENCHMARK
B.O.F.	BOTTOM OF FOOTING
CATV	CABLE TELEVISION
CB	CATCH BASIN
C.C.	CENTER TO CENTER
C.C.S.	CONNECTICUT COORDINATE SYSTEM
CFS	CUBIC FEET PER SECOND
CHD	CONNECTICUT HIGHWAY DEPARTMENT
CIP	CAST IRON PIPE
CJ	CONSTRUCTION OR CONTRACTION JOINT
CL	CLEAR
C.L.&P.	CONNECTICUT LIGHT AND POWER
CMP	CORRUGATED METAL PIPE
CMU	CONCRETE MASONRY UNIT
CONC.	CONCRETE
CONT.	CONTINUOUS
CPEP	CORRUGATED POLYETHYLENE PIPE
C.Y.	CUBIC YARD
DBL	DOUBLE
DH	DRILL HOLE
DI	DUCTILE IRON
DIA	DIAMETER
DIP	DUCTILE IRON PIPE
EA	EACH
EJ	EXPANSION JOINT
EL	ELEVATION
E.O.B.	END OF BORING
EQP	EDGE OF PAVEMENT
EQ	EQUAL
EX	EXISTING
f'	MINIMUM COMPRESSIVE STRENGTH
y	YIELD STRENGTH OF STEEL REINFORCEMENT
F.F.	FINISH FLOOR
FM	FORCE MAIN
FND	FOUND
FRP	FIBERGLASS REINFORCED PLASTIC
FT	FEET OR FOOT
GA	GAUGE
GAL	GALLON
H	HORIZONTAL
HDPE	HIGH DENSITY POLYETHYLENE
HMA	HOT MIX ASPHALT
HTL	HIGH TIDE LINE
I.D.	INSIDE DIAMETER
INV.	INVERT
IP	IRON PIPE/PIPE
KSF	KIPS PER SQUARE FOOT
L	LENGTH
LB	POUND
L.F.	LINEAR FEET
L.S.	LUMP SUM
LT	LEFT
LVC	LENGTH OF VERTICAL CURVE
MAX.	MAXIMUM
MH	MANHOLE
MIN.	MINIMUM
MON	MONUMENT
NIF	NOW OR FORMERLY
N.I.C.	NOT IN CONTRACT
NTS	NOT TO SCALE
O.C.	ON CENTER
O.D.	OUTSIDE DIAMETER
P.C.	POINT OF CURVATURE
P.C.C.	POINT OF COMPOUND CURVATURE
PE	PLAIN END OR POLYETHYLENE
P.I.	POINT OF INTERSECTION
P.R.C.	POINT OF REVERSE CURVATURE
PSF	POUNDS PER SQUARE FOOT
PSI	POUNDS PER SQUARE INCH
P.T.	POINT OF TANGENCY
PVC	POLYVINYL CHLORIDE OR POINT OF VERTICAL CURVATURE
PVCC	POINT OF VERTICAL COMPOUND CURVATURE
PVI	POINT OF VERTICAL INTERSECTION
PVRC	POINT OF VERTICAL REVERSE CURVATURE
PVT	POINT OF VERTICAL TANGENCY
R	RADIUS
RCCE	REINFORCED CONCRETE CULVERT END
RCP	REINFORCED CONCRETE PIPE
R.O.W.	RIGHT-OF-WAY
R.R.	RAILROAD
RT	RIGHT
RW	RETAINING WALL
SAN	SANITARY
SCG	SOUTHERN CONNECTICUT GAS
SGH	SCHEDULE
SDR	STANDARD DIMENSION RATIO
S.F.	SQUARE FOOT
SNET	SOUTHERN NEW ENGLAND TELEPHONE
S.S.	STAINLESS STEEL
STA.	STATION
STD.	STANDARD
S.Y.	SQUARE YARD
T&B	TOP AND BOTTOM
T.F.	TOP OF FRAME
T.G.	TOP OF GRATE
T.O.F.	TOP OF FOOTING
T.O.W.	TOP OF WALL
TYP.	TYPICAL
U.I.	UNITED ILLUMINATING
V	VERTICAL
VCP	VITRIFIED CLAY PIPE
WF	WETLAND FLAG

PROPERTY LINE	---
RIGHT-OF-WAY LINE	----
EASEMENT LINE	----
BASELINE	----
ELEVATION CONTOUR	- - - -
ELEVATION	x 100.0
EDGE OF PAVEMENT	=====
CURBING	=====
GUIDE RAIL	=====
TREE LINE	=====
MAILBOX	☐
SIGN	☐
LIGHT POST	☐
UTILITY POLE (W/GUY)	☐
UTILITY POLE (W/LIGHT)	☐
HYDRANT	☐
CHAIN LINK FENCE	-----
WIRE FENCE	- x - x - x - x - x - x -
WOOD FENCE	- // - // - // - // - // - // -
STONE WALL	=====
HEDGE/ROW	=====
WATERCOURSE	=====
INLAND WETLAND BOUNDARY	-----
TIDAL WETLAND BOUNDARY	-----
COMMUNICATIONS	-----
ELECTRIC	-----
GAS MAIN/SERVICE	-----
WATER MAIN/SERVICE	-----
OVERHEAD UTILITY WIRE(S)	-----
SANITARY SEWER ≤ 12" DIAMETER	-----
SANITARY SEWER > 12" DIAMETER	-----
STORM SEWER ≤ 12" DIAMETER	-----
STORM SEWER > 12" DIAMETER	-----
CATCH BASIN	☐
MANHOLE	○
SURVEY STATION	☐
TEST PIT	☐
BORING	☐
PROBE	☐
ASSESSOR'S MAP NO./LOT NO.	49-50 87B
SOIL TYPE	-----
SOIL TYPE BOUNDARY	-----
FLOODPLAIN BOUNDARY	-----
CLEARING LIMIT LINE	-----
LIMIT OF CUT	-----
LIMIT OF FILL	-----
PAVEMENT REMOVAL LINE	-----
SEDIMENTATION CONTROL BARRIER	-----
SEDIMENTATION CONTROL AT DRAINAGE STRUCTURE	☐
DECIDUOUS TREE	○
CONIFEROUS TREE	☐
SHRUB	☐
TREE TO BE REMOVED	☐

EXISTING

PROPOSED



SOIL TYPE LEGEND

REFERENCE:
NATIONAL COOPERATIVE SOIL SURVEY DATA FOR THE STATE OF CONNECTICUT, U.S. DEPARTMENT OF AGRICULTURE, NATURAL RESOURCES CONSERVATION SERVICE

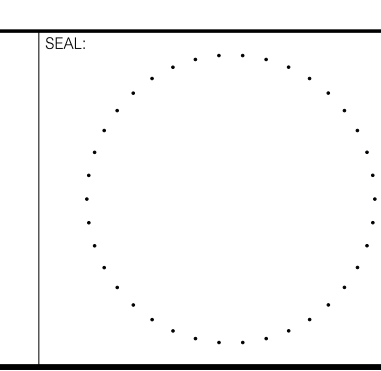
MAP UNIT SYMBOL	MAP UNIT DESCRIPTION
36B	WINDSOR LOAMY SAND, 3 TO 8 PERCENT SLOPES

GENERAL NOTES:

- THESE DRAWINGS ARE INTENDED TO BE USED FOR MUNICIPAL, STATE, AND/OR FEDERAL LAND USE AND ENVIRONMENTAL PERMITTING PURPOSES AND ARE NOT INTENDED TO BE USED AS CONSTRUCTION DOCUMENTS.
- PROPERTY BOUNDARY, STREET LINE, AND PLANIMETRIC AND TOPOGRAPHIC INFORMATION DEPICTED HEREIN HAS BEEN REPRODUCED FROM THE FOLLOWING MAP:
IMPROVEMENT LOCATION SURVEY PREPARED FOR HERBERT T. CLARK, III #37 BOKUM ROAD ESSEX, CONNECTICUT, SHEETS 1-2 OF 2, SCALE: 1"=40', DATE: 3-11-20, PREPARED BY DOANE ENGINEERING.
- THE INLAND WETLAND BOUNDARY DEPICTED HEREIN WAS DELINEATED BY R. RICHARD SNARSKI, CPSS OF NEW ENGLAND ENVIRONMENTAL SERVICES ON 12-23-18.
- THE PROJECT COORDINATE SYSTEM IS REFERENCED TO THE BEARING SYSTEM OF THE REFERENCE MAP NOTED.
- ELEVATIONS ARE REFERENCED TO THE NORTH AMERICAN VERTICAL DATUM OF 1988.
- THE PARCEL IS DEPICTED ON ASSESSORS MAP 67 AS LOT 4.
- PARCEL AREA = 388,259 SF = 8.91 AC. PER THE REFERENCE MAP NOTED.
- THE PARCEL IS LOCATED WITHIN A LIMITED INDUSTRIAL (LI) ZONING DISTRICT.
- THE PARCEL IS LOCATED WITHIN SPECIAL FLOOD HAZARD AREA ZONE A AND FLOOD ZONE X. REFERENCE: FEMA NATIONAL FLOOD INSURANCE PROGRAM FLOOD INSURANCE RATE MAP MIDDLESEX COUNTY, CONNECTICUT PANEL 333 OF 450, MAP NUMBER 09007C0333G, EFFECTIVE DATE: 8-28-08.
- SOIL TYPES AND/OR SOIL TYPE BOUNDARIES DEPICTED HEREIN HAVE BEEN REPRODUCED FROM NATIONAL COOPERATIVE SOIL SURVEY DATA FOR THE STATE OF CONNECTICUT, U.S. DEPARTMENT OF AGRICULTURE, NATURAL RESOURCES CONSERVATION SERVICE.
- UNDERGROUND UTILITIES, STRUCTURES AND OTHER FACILITIES DEPICTED HEREIN HAVE BEEN COMPILED FROM RECORD MAPS AND FIELD LOCATIONS OF ABOVE GROUND FACILITIES AND MARKOUTS. ALL UNDERGROUND FACILITY LOCATIONS SHOWN SHOULD BE CONSIDERED APPROXIMATE ONLY AND ALL FACILITIES MAY NOT BE SHOWN.
- THE CONTRACTOR SHALL BE RESPONSIBLE FOR LOCATING ALL UNDERGROUND UTILITIES AND FOR THE MAINTENANCE AND PROTECTION THEREOF. CONTACT THE CONNECTICUT "CALL BEFORE YOU DIG" CLEARANCE CENTER (1-800-922-4455) AT LEAST TWO WORKING DAYS PRIOR TO THE START OF WORK TO ESTABLISH AND HAVE MARKED ON THE GROUND THE LOCATION OF ALL UNDERGROUND UTILITIES. NOTIFY THE ENGINEER IN THE EVENT THAT A UTILITY IS LOCATED DURING THE PROGRESS OF THE WORK THAT IS NOT INDICATED ON OR IS NOT IN ACCORDANCE WITH THE DRAWINGS.
- UTILITY COMPANY CONTACTS:
CABLE TELEVISION - COMCAST OF CONNECTICUT, INC. (860) 595-3331
COMMUNICATIONS - FRONTIER COMMUNICATIONS OF CONNECTICUT (203) 238-5000
COMMUNICATIONS - LIGHT TOWER FIBER NETWORKS I, LLC (203) 649-3904
ELECTRIC - EVERSOURCE ENERGY (860) 665-4733
GAS - SOUTHERN CONNECTICUT GAS COMPANY (203) 795-7767
WATER - CONNECTICUT WATER COMPANY (860) 664-6007
- IN GENERAL, EXISTING CONDITIONS AND FEATURES ARE DEPICTED IN SCREENED GRAPHICS AND TITLECASE LETTERING AND PROPOSED WORK IS DEPICTED IN BOLD GRAPHICS AND UPPERCASE LETTERING.
- THE STANDARD SPECIFICATIONS ARE THE DIVISION II CONSTRUCTION DETAILS AND DIVISION III MATERIALS SECTION OF THE "STATE OF CONNECTICUT DEPARTMENT OF TRANSPORTATION STANDARD SPECIFICATIONS FOR ROADS, BRIDGES, FACILITIES AND INCIDENTAL CONSTRUCTION, FORM 816", 2020, LATEST REVISION, INCLUDING ALL SUPPLEMENTS THERETO.
- PRIOR TO THE START OF WORK, THOROUGHLY REVIEW THE DRAWINGS, THE SITE OF THE WORK AND ALL EXISTING CONDITIONS AND FEATURES. NOTIFY THE ENGINEER OF DISCREPANCIES BETWEEN THE DRAWINGS AND EXISTING CONDITIONS AND FEATURES IN THE FIELD.
- ADHERE TO THE REGULATIONS AND ORDINANCES OF THE TOWN OF ESSEX, ALL APPLICABLE STATE AND FEDERAL REGULATORY AUTHORITIES, AND THE PROVISIONS OF ALL APPROVALS AND OR PERMITS ISSUED FOR THE PROJECT.
- PROVIDE EROSION AND SEDIMENT CONTROLS AS SHOWN ON THE DRAWINGS OR AS ORDERED BY THE ENGINEER. THE MINIMUM STANDARDS FOR ALL EROSION AND SEDIMENT CONTROLS SHALL BE THOSE OUTLINED IN THE "2002 CONNECTICUT GUIDELINES FOR SOIL EROSION AND SEDIMENT CONTROL", LATEST REVISION. TEMPORARY EROSION AND SEDIMENT CONTROLS SHALL BE MAINTAINED UNTIL ALL DISTURBED AREAS HAVE BEEN STABILIZED.
- MATERIAL AND EQUIPMENT STORAGE AREA LOCATIONS SHALL BE APPROVED BY THE ENGINEER.
- VEHICLE AND EQUIPMENT FUELING AND MAINTENANCE OPERATIONS SHALL BE PERFORMED ONLY IN AREAS APPROVED BY THE ENGINEER.
- IN THE EVENT OF A CONTAMINANT RELEASE, IMMEDIATELY NOTIFY THE CONNECTICUT DEPARTMENT OF ENVIRONMENT AND ENVIRONMENTAL PROTECTION EMERGENCY RESPONSE AND SPILL PREVENTION DIVISION (860-424-3336 OR 860-337-7745) AND THE TOWN OF ESSEX FIRE MARSHALS OFFICE (860-744-4340).
- COORDINATE ALL BUILDING UTILITY SERVICE WORK WITH THE RESPECTIVE UTILITY COMPANIES.
- ALL WORK WITHIN THE RIGHT-OF-WAY OF BOKUM ROAD WILL REQUIRE AN ENCROACHMENT PERMIT FROM THE TOWN OF ESSEX DEPARTMENT OF PUBLIC WORKS.
- BE RESPONSIBLE FOR THE MAINTENANCE AND PROTECTION OF TRAFFIC WITHIN AND ADJACENT TO WORK AREAS.
- BE RESPONSIBLE FOR THE CONTROL OF DUST RESULTING FROM CONSTRUCTION OPERATIONS.
- PROTECT ALL EXISTING CONDITIONS AND FEATURES WHERE NEW CONSTRUCTION IS NOT SHOWN ON THE DRAWINGS.
- PROTECT STREET LINE MONUMENTS AND PRIVATE BOUNDARY MARKERS. RESET STREET LINE MONUMENTS AND PRIVATE BOUNDARY MARKERS DISTURBED BY CONSTRUCTION OPERATIONS.
- PRIOR TO THE START OF TREE AND VEGETATION REMOVAL WORK, SCHEDULE A FIELD MEETING WITH THE ENGINEER TO REVIEW SPECIFIC TREES AND VEGETATION TO BE REMOVED AND TREES AND VEGETATION TO BE PROTECTED.
- SAWCUT PAVEMENTS AT THE LINES SHOWN ON THE DRAWINGS, WHERE NEW BITUMINOUS CONCRETE PAVEMENT IS TO BE PLACED AGAINST EXISTING PAVEMENT, CLEAN THE FACE OF EXISTING PAVEMENT AND APPLY LIQUID BITUMEN. MATCH EXISTING ADJACENT PAVEMENT SURFACE ELEVATIONS WITH NEW PAVEMENT.
- ADJUST MANHOLE FRAMES, HANDHOLES, AND VALVE BOXES TO MATCH FINISHED GROUND SURFACE AND PAVEMENTS ELEVATIONS.
- PAVEMENT MARKINGS SHALL BE INSTALLED IN ACCORDANCE WITH THE REQUIREMENTS OF THE STANDARD SPECIFICATIONS.
- SIGNS SHALL BE INSTALLED IN ACCORDANCE WITH THE REQUIREMENTS OF THE STANDARD SPECIFICATIONS. TEMPORARY AND PERMANENT SIGN IDENTIFICATION NUMBERS SHOWN ON THE DRAWINGS ARE IN ACCORDANCE WITH THE U.S. DEPARTMENT OF TRANSPORTATION FEDERAL HIGHWAY ADMINISTRATION "MANUAL ON UNIFORM TRAFFIC CONTROL DEVICES", LATEST REVISION AND THE CONNECTICUT DEPARTMENT OF TRANSPORTATION SIGN CATALOG, LATEST REVISION.
- THE SUBGRADE OF DISTURBED GROUND SURFACES NOT NOTED TO BE SURFACED OTHERWISE SHALL RECEIVE A 6" DEPTH OF TOPSOIL UPON WHICH TURF SHALL BE ESTABLISHED.

NO.	DATE	DESCRIPTION
1	9-13-21	REVIEW COMMENTS
2	8-15-21	MISCELLANEOUS
3		REVISIONS

LAND OF
GEORGE C. FIELD COMPANY, INC.
BOKUM ROAD
ESSEX, CONNECTICUT

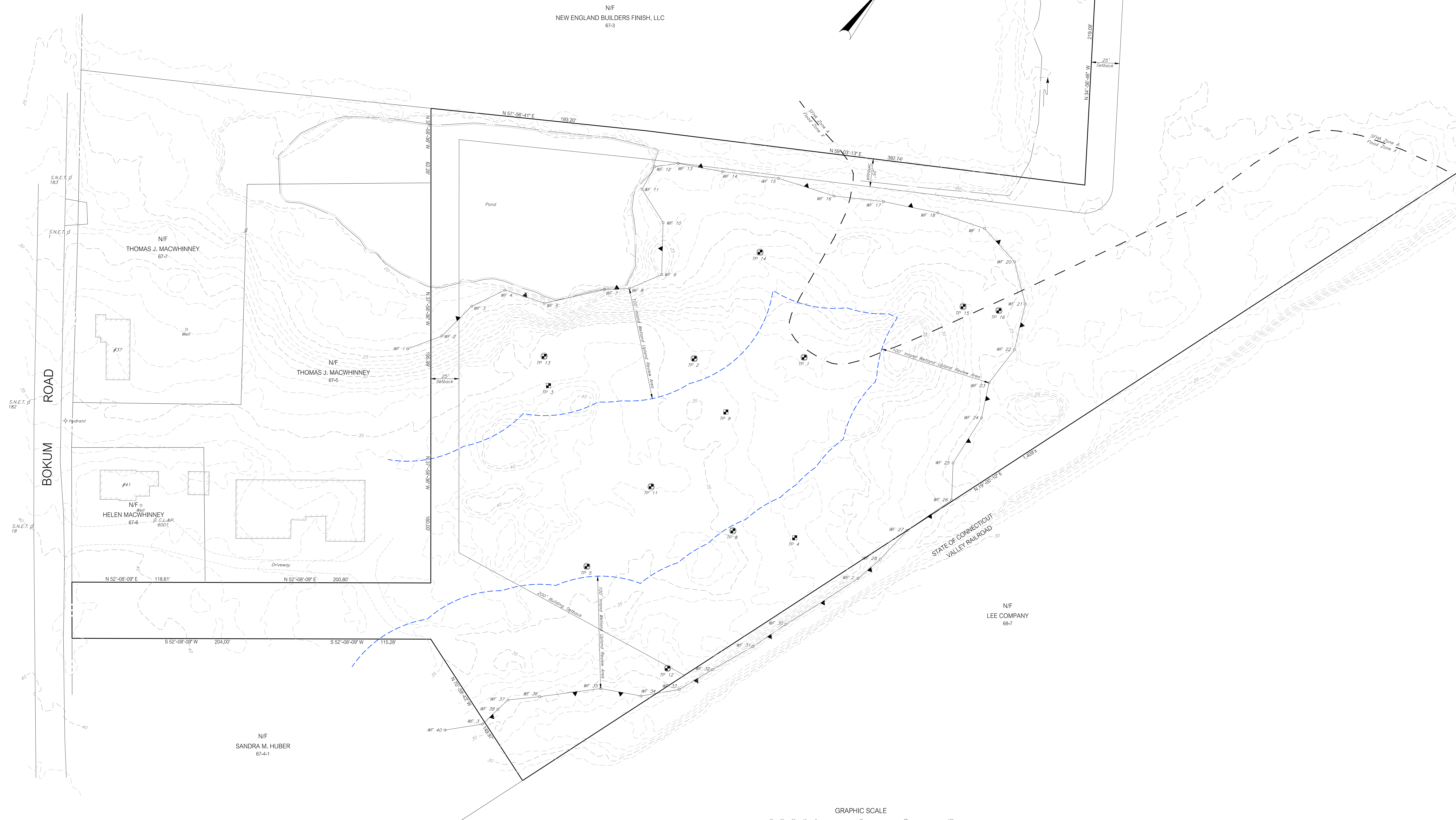
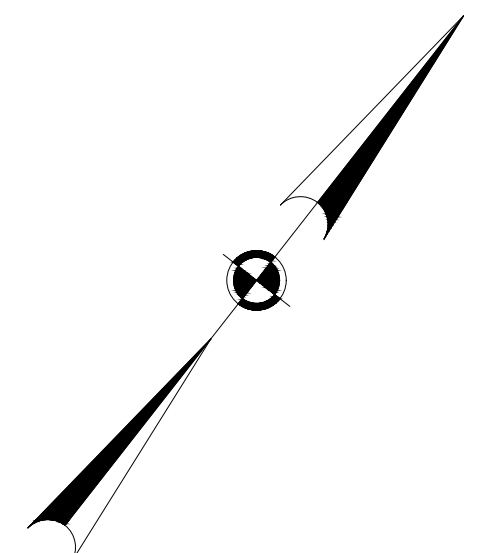


PROJECT: BOKUM ROAD BUSINESS PARK
BOKUM ROAD
ESSEX, CONNECTICUT

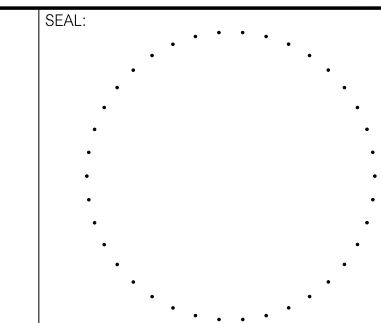
DATE: 7-1-21
SCALE: AS NOTED
DESIGNED: MJO
CHECKED: LIM

DATE: 7-1-21	SHEET: GENERAL NOTES, ABBREVIATIONS AND LEGEND	SHEET NO.: C0.2
SCALE: AS NOTED	FIELD BOOK: -	PROJECT NO.: 20-50
DESIGNED: MJO		
CHECKED: LIM		

BOUNDARY ALONG CENTER OF MUD RIVER
698±



LAND
OF
GEORGE C. FIELD COMPANY, INC.
BOKUM ROAD
ESSEX, CONNECTICUT



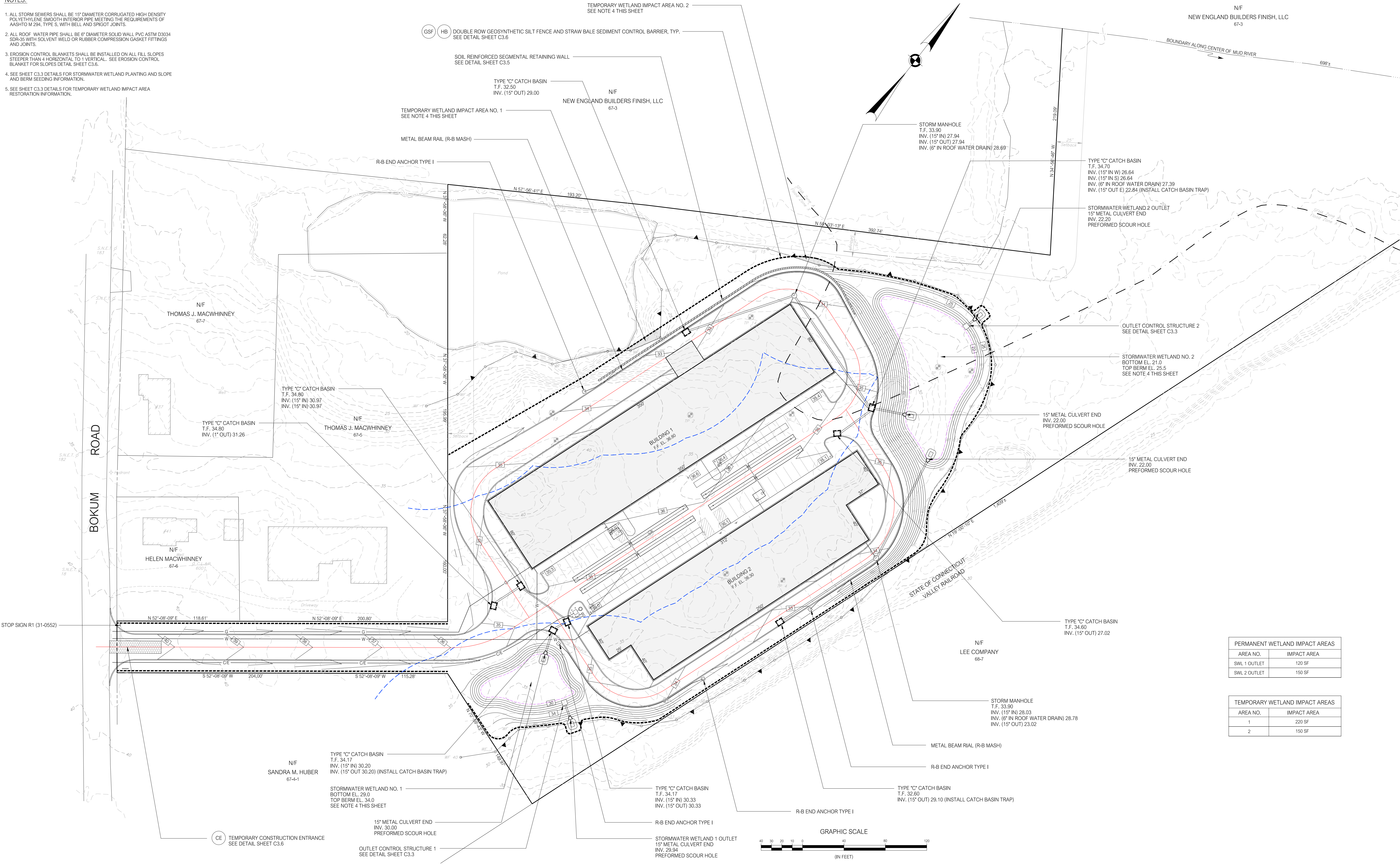
PREPARED BY:
Summer Hill
Civil Engineers & Land Surveyors, P.C.
60 Wall Street
P.O. Box 708
Madison, Connecticut 06443-0708
Telephone: (203) 245-0722

PROJECT: BOKUM ROAD BUSINESS PARK BOKUM ROAD ESSEX, CONNECTICUT		SHEET: EXISTING CONDITIONS PLAN	SHEET NO.: C1.1
DATE: 7-1-21	SCALE: 1"=40'	DESIGNED: MJU	CHECKED: LJM
PROJECT NO.: 20-50			

NO.	DATE	DESCRIPTION
1	9-13-21	REVIEW COMMENTS
2	8-15-21	MISCELLANEOUS
REVISIONS		

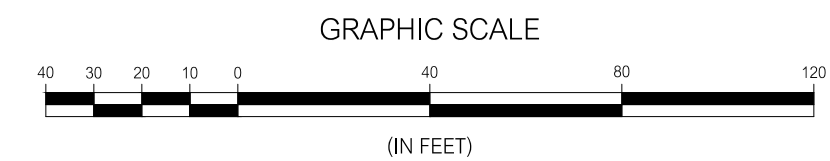
NOTES:

1. ALL STORM SEWERS SHALL BE 15" DIAMETER CORRUGATED HIGH DENSITY POLYETHYLENE SMOOTH INTERIOR PIPE MEETING THE REQUIREMENTS OF AASHTO M 294, TYPE S, WITH BELL AND SPIGOT JOINTS.
2. ALL ROOF WATER PIPE SHALL BE 6" DIAMETER SOLID WALL PVC ASTM D3034 SDR-35 WITH SOLVENT WELD OR RUBBER COMPRESSION GASKET FITTINGS AND JOINTS.
3. EROSION CONTROL BLANKETS SHALL BE INSTALLED ON ALL FILL SLOPES STEEPER THAN 4 HORIZONTAL TO 1 VERTICAL. SEE EROSION CONTROL BLANKET FOR SLOPES DETAIL SHEET C3.6.
4. SEE SHEET C3.3 DETAILS FOR STORMWATER WETLAND PLANTING AND SLOPE AND BERM SEEDING INFORMATION.
5. SEE SHEET C3.3 DETAILS FOR TEMPORARY WETLAND IMPACT AREA RESTORATION INFORMATION.



PERMANENT WETLAND IMPACT AREAS	
AREA NO.	IMPACT AREA
SWL 1 OUTLET	120 SF
SWL 2 OUTLET	150 SF

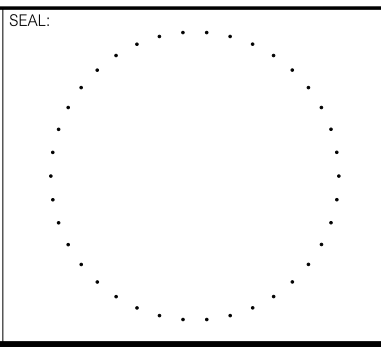
TEMPORARY WETLAND IMPACT AREAS	
AREA NO.	IMPACT AREA
1	220 SF
2	150 SF



NO.	DATE	DESCRIPTION
1	9-13-21	REVIEW COMMENTS
2	8-15-21	MISCELLANEOUS
3		DESCRIPTION

REVISIONS	TITLE
	LAND OF GEORGE C. FIELD COMPANY, INC. BOKUM ROAD ESSEX, CONNECTICUT

LAND OF
GEORGE C. FIELD COMPANY, INC.
BOKUM ROAD
ESSEX, CONNECTICUT



PREPARED BY:
Summer Hill
Civil Engineers & Land Surveyors, P.C.
60 Wall Street
P.O. Box 708
Madison, Connecticut 06443-0708
Telephone: (203) 245-0722

DATE:	7-1-21	SHEET:	BOKUM ROAD BUSINESS PARK BOKUM ROAD ESSEX, CONNECTICUT	
SCALE:	1"=40'	GENERAL PLAN		
DESIGNED:	MJO			
CHECKED:	LJM			
PROJECT NO.:	20-60	C2.1		

NOTES:

1. ALL BUILDING SEWERS SHALL HAVE A MINIMUM SLOPE OF 0.0208 FT/FT.
2. ALL EFFLUENT SEWER PIPE SHALL HAVE A MINIMUM SLOPE OF 0.0104 FT/FT.
3. SEE SHEET C3.2 DETAILS FOR SUBSURFACE SEWAGE DISPOSAL SYSTEM MATERIAL REQUIREMENTS.

N/F
NEW ENGLAND BUILDERS FINISH, LLC
67-3

2 ROWS-104 L.F. GEOMATIRX GST 6218 LEACHING SYSTEM
SEE DETAIL SHEET C3.2

PRECAST CONCRETE DISTRIBUTION BOX, TYP.
SEE DETAIL SHEET C3.2

N/F
NEW ENGLAND BUILDERS FINISH, LLC
67-3

N/F
THOMAS J. MACWHINNEY
67-7

3,000 GALLON PRECAST CONCRETE SEPTIC TANK
SEE DETAIL SHEET C3.2

INSPECTION PORT, TYP.
SEE DETAIL SHEET C3.2

N/F
THOMAS J. MACWHINNEY
67-5

BUILDING 1
F.F. EL. 28.90

BUILDING 2
F.F. EL. 28.30

STATE OF CONNECTICUT
VALLEY RAILROAD

N/F
LEE COMPANY
68-7

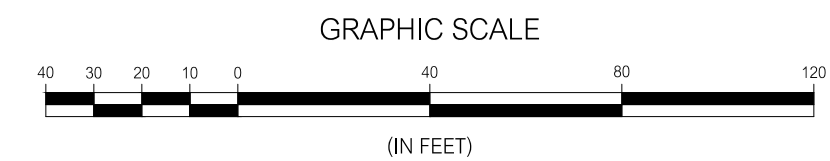
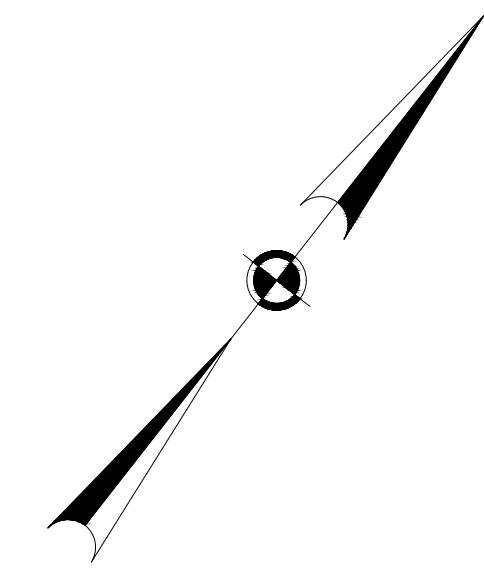
INSPECTION PORT, TYP.
SEE DETAIL SHEET C3.2

2,500 GALLON PRECAST CONCRETE SEPTIC TANK
SEE DETAIL SHEET C3.2

N/F
SANDRA M. HUBER
67-4-1

PRECAST CONCRETE DISTRIBUTION BOX, TYP.
SEE DETAIL SHEET C3.2

2 ROWS-128 L.F. GEOMATIRX GST 6218 LEACHING SYSTEM
SEE DETAIL SHEET C3.2



NO.	DATE	DESCRIPTION
1	9-13-21	REVIEW COMMENTS
2	8-15-21	MISCELLANEOUS
3		REVISIONS

LAND OF
GEORGE C. FIELD COMPANY, INC.
BOKUM ROAD
ESSEX, CONNECTICUT

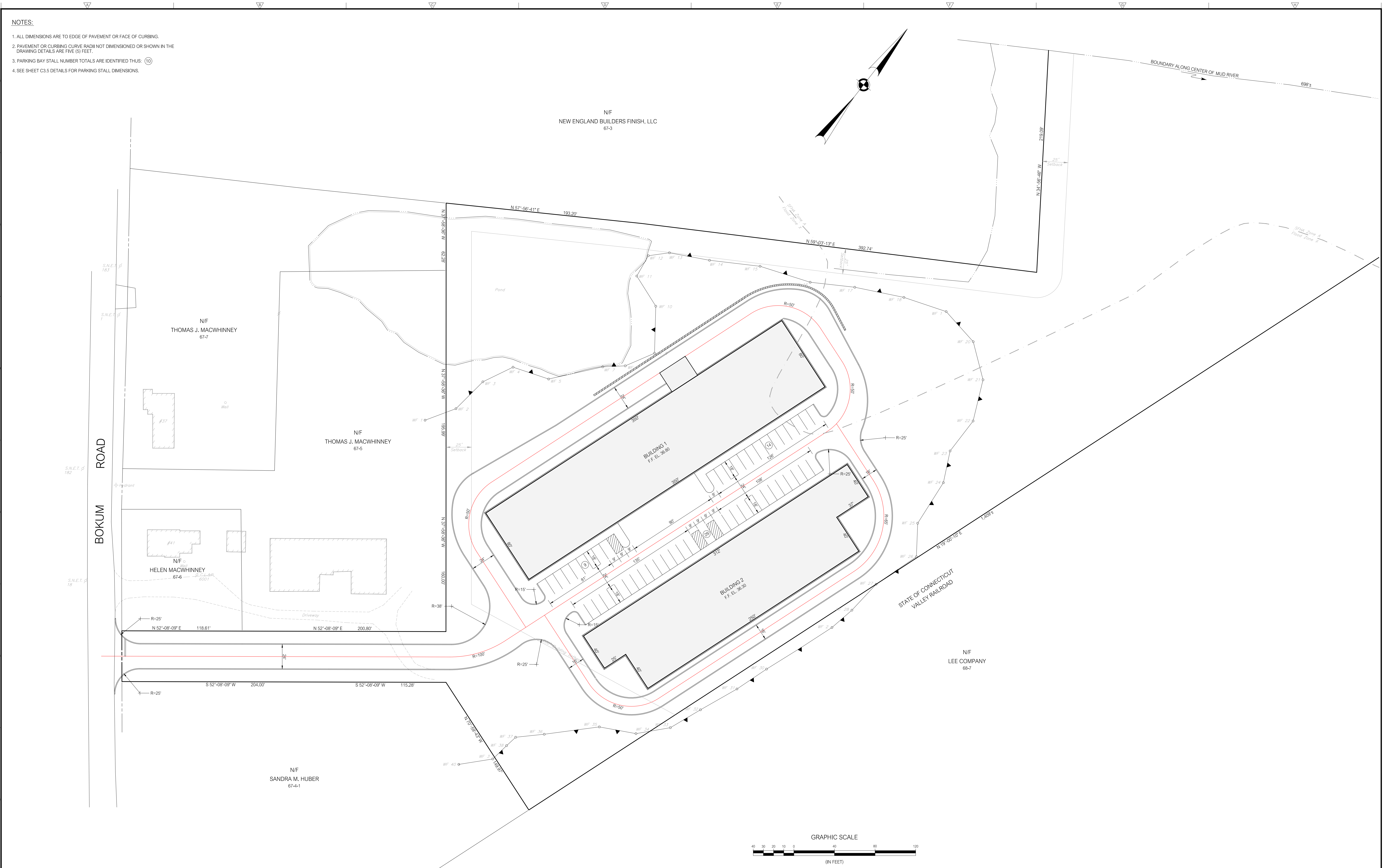
SEAL:

PREPARED BY:
Summer Hill
Civil Engineers & Land Surveyors, P.C.
60 Wall Street
P.O. Box 7108
Madison, Connecticut 06443-0708
Telephone: (203) 245-0722

PROJECT:	BOKUM ROAD BUSINESS PARK BOKUM ROAD ESSEX, CONNECTICUT	
DATE:	7-1-21	SHEET:
SCALE:	1"=40'	SUBSURFACE SEWAGE DISPOSAL SYSTEM PLAN
DESIGNED:	MJO	C2.2
CHECKED:	LJM	PROJECT NO.: 20-50

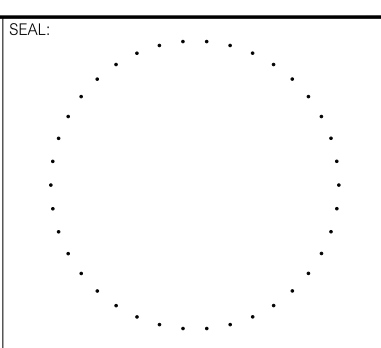
NOTES:

1. ALL DIMENSIONS ARE TO EDGE OF PAVEMENT OR FACE OF CURBING.
2. PAVEMENT OR CURBING CURVE RADII NOT DIMENSIONED OR SHOWN IN THE DRAWING DETAILS ARE FIVE (5) FEET.
3. PARKING BAY STALL NUMBER TOTALS ARE IDENTIFIED THUS: ⑩
4. SEE SHEET C3.5 DETAILS FOR PARKING STALL DIMENSIONS.



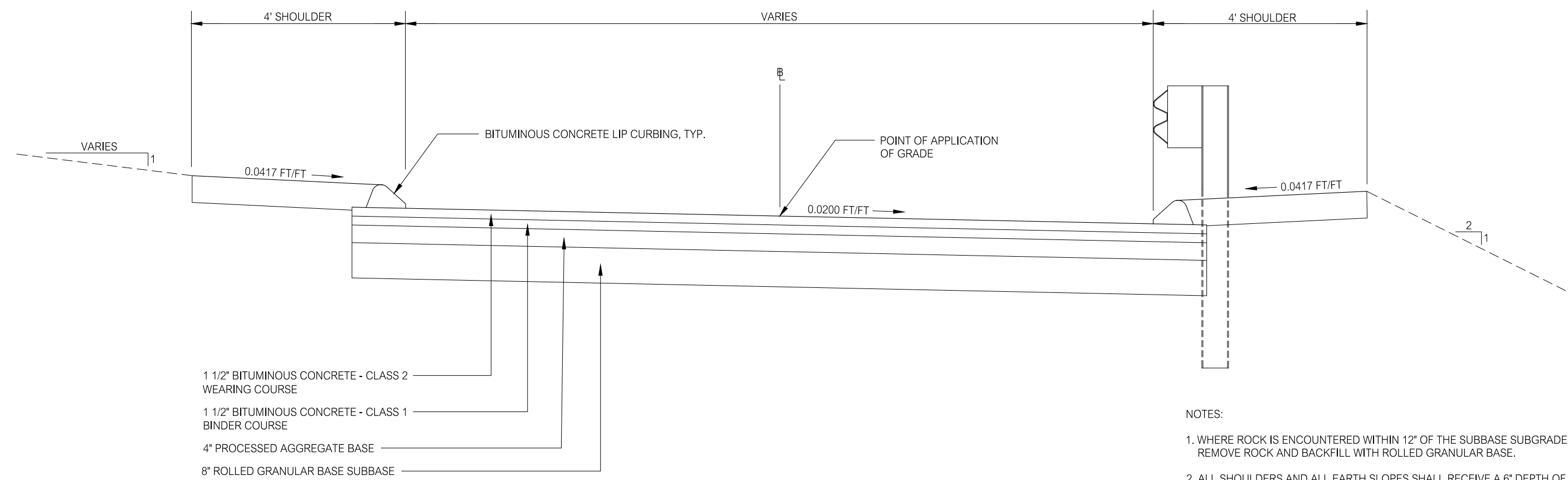
NO.	DATE	DESCRIPTION
1	9-13-21	REVIEW COMMENTS
2	8-15-21	MISCELLANEOUS
		REVISIONS

LAND OF
OF
GEORGE C. FIELD COMPANY, INC.
BOKUM ROAD
ESSEX, CONNECTICUT



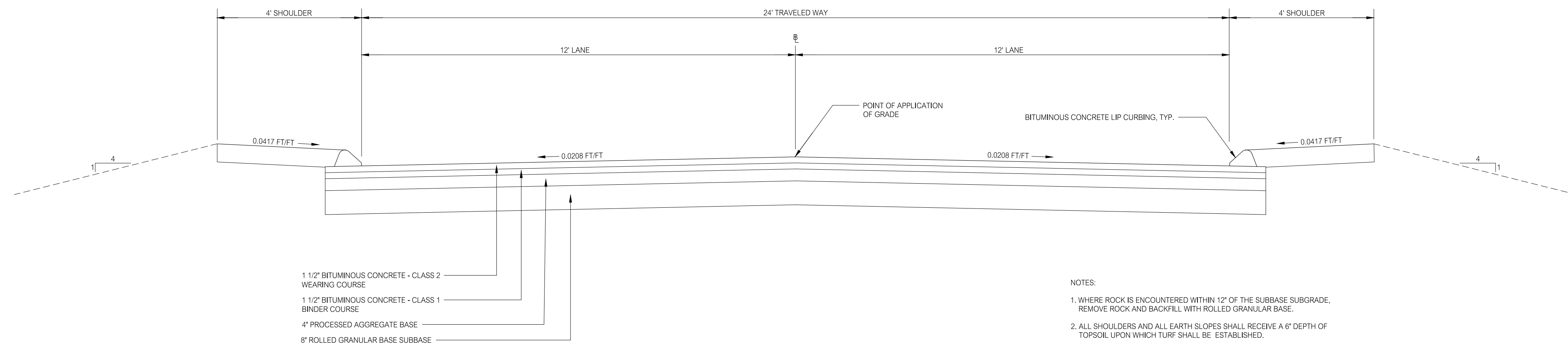
PREPARED BY:
Summer Hill
Civil Engineers & Land Surveyors, P.C.
60 Wall Street
P.O. Box 7108
Madison, Connecticut 06443-0708
Telephone: (203) 245-0722

PROJECT: BOKUM ROAD BUSINESS PARK BOKUM ROAD ESSEX, CONNECTICUT		SHEET NO.:
DATE: 7-1-21	SHEET: 1	C2.3
SCALE: 1"=40'	TITLE: SITE LAYOUT PLAN	
DESIGNED: MJU	PROJECT NO.: 20-50	
CHECKED: LJM	FIELD BOOK:	



TYPICAL DRIVEWAY CROSS SECTION
NOT TO SCALE

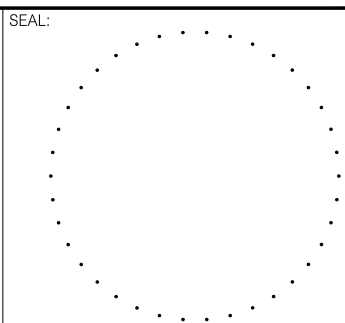
NOTES:
1. WHERE ROCK IS ENCOUNTERED WITHIN 12" OF THE SUBBASE SUBGRADE, REMOVE ROCK AND BACKFILL WITH ROLLED GRANULAR BASE.
2. ALL SHOULDERS AND ALL EARTH SLOPES SHALL RECEIVE A 6" DEPTH OF TOPSOIL UPON WHICH TURF SHALL BE ESTABLISHED.



TYPICAL ACCESS ROADWAY CROSS SECTION
NOT TO SCALE

NOTES:
1. WHERE ROCK IS ENCOUNTERED WITHIN 12" OF THE SUBBASE SUBGRADE, REMOVE ROCK AND BACKFILL WITH ROLLED GRANULAR BASE.
2. ALL SHOULDERS AND ALL EARTH SLOPES SHALL RECEIVE A 6" DEPTH OF TOPSOIL UPON WHICH TURF SHALL BE ESTABLISHED.

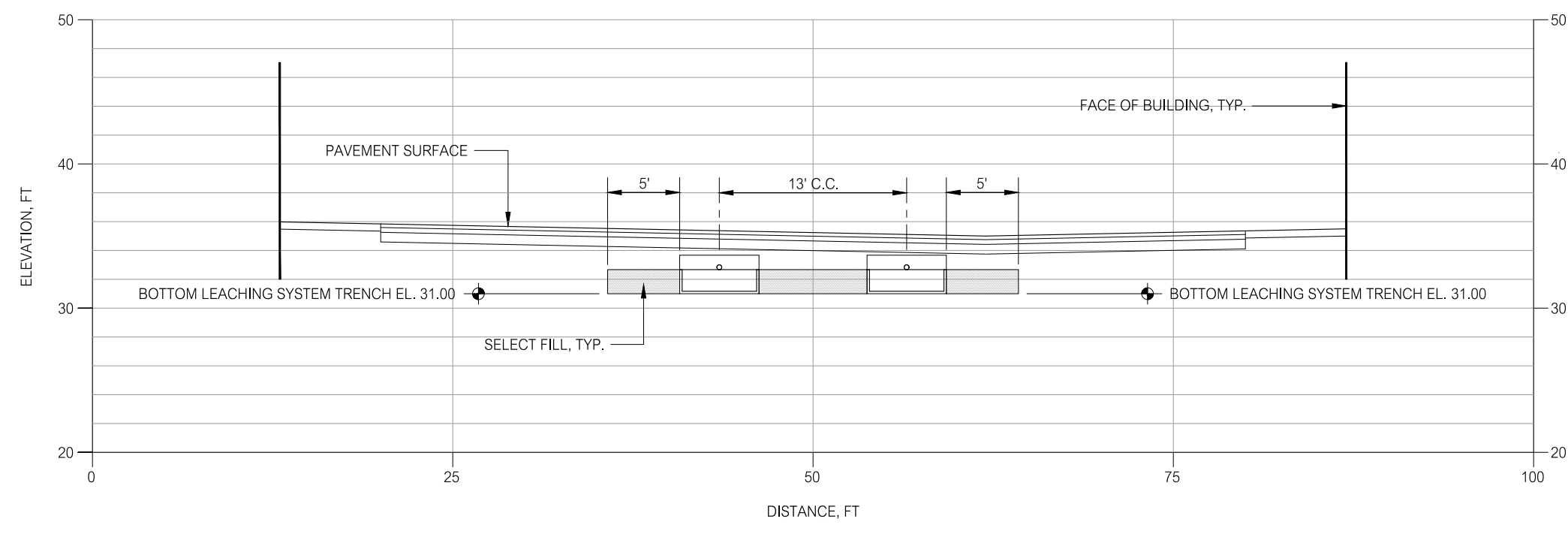
LAND OF
GEORGE C. FIELD COMPANY, INC.
BOKUM ROAD
ESSEX, CONNECTICUT



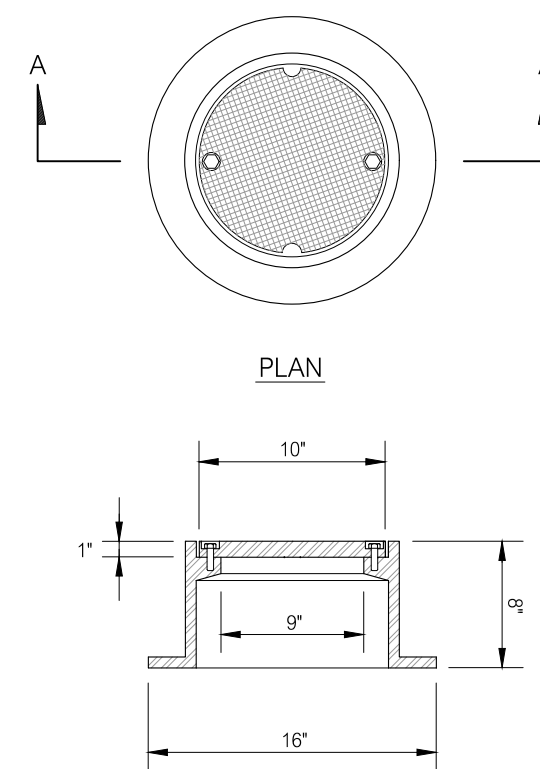
PREPARED BY:
Summer Hill
Civil Engineers & Land Surveyors, P.C.
60 Wall Street
P.O. Box 7108
Madison, Connecticut 06443-0708
Telephone: (203) 245-0722

PROJECT: BOKUM ROAD BUSINESS PARK BOKUM ROAD ESSEX, CONNECTICUT		SHEET: DETAILS	SHEET NO.: C3.1
DATE: 7-1-21	SCALE: AS NOTED	DESIGNED: MJO	CHECKED: LJM
PROJECT NO.: 20-50			

NO.	DATE	DESCRIPTION
1	9-13-21	REVIEW COMMENTS
2	8-15-21	MISCELLANEOUS
REVISIONS		



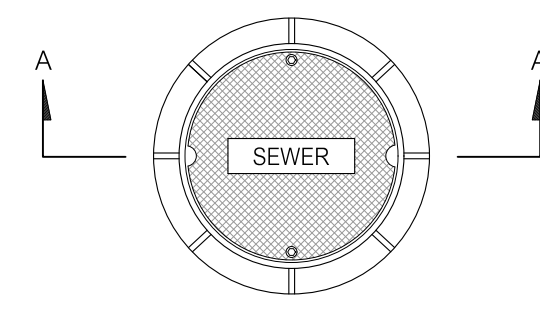
TYPICAL LEACHING FIELD SECTION X-X
SCALE: 1"=10'



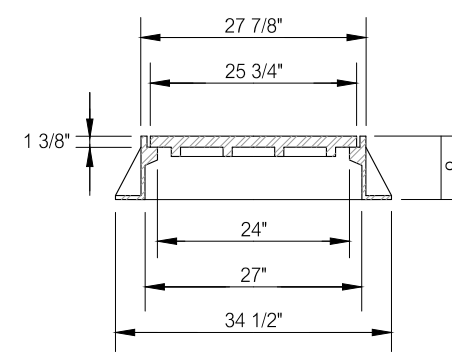
SECTION A-A

ACCESS FRAME AND COVER
NOT TO SCALE

NOTE:
HEAVY DUTY, BOLTED COVER ACCESS FRAME AND COVER PATTERN NUMBER 4155, CAMPBELL FOUNDRY COMPANY, NORTH HAVEN, CONNECTICUT OR APPROVED EQUAL.



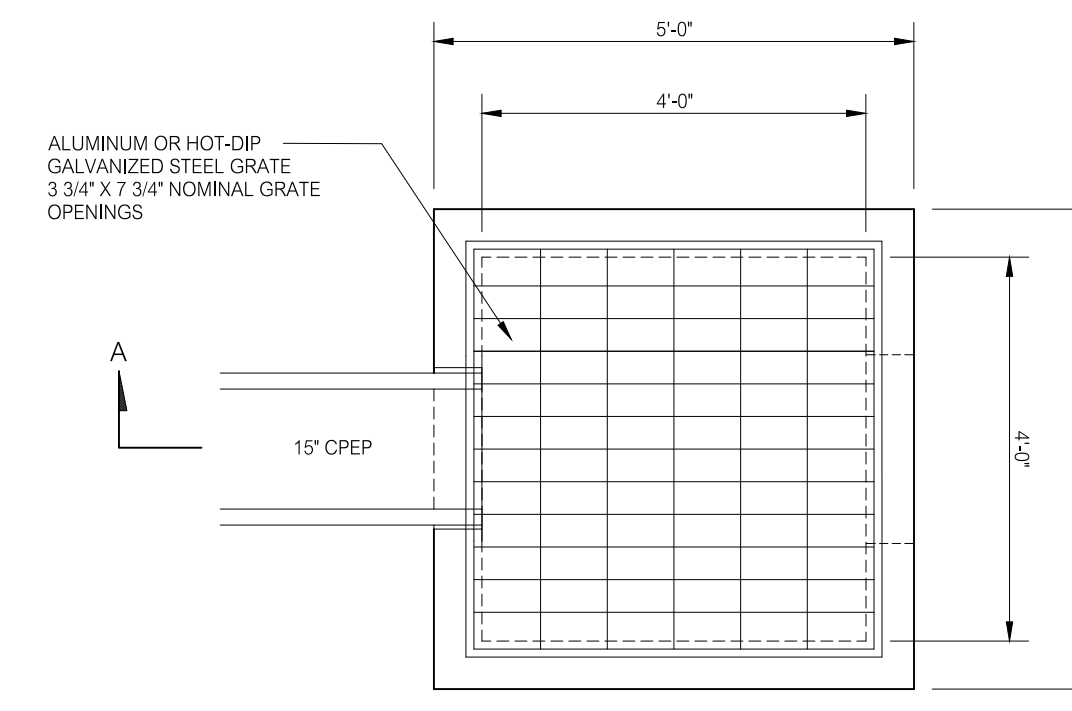
PLAN



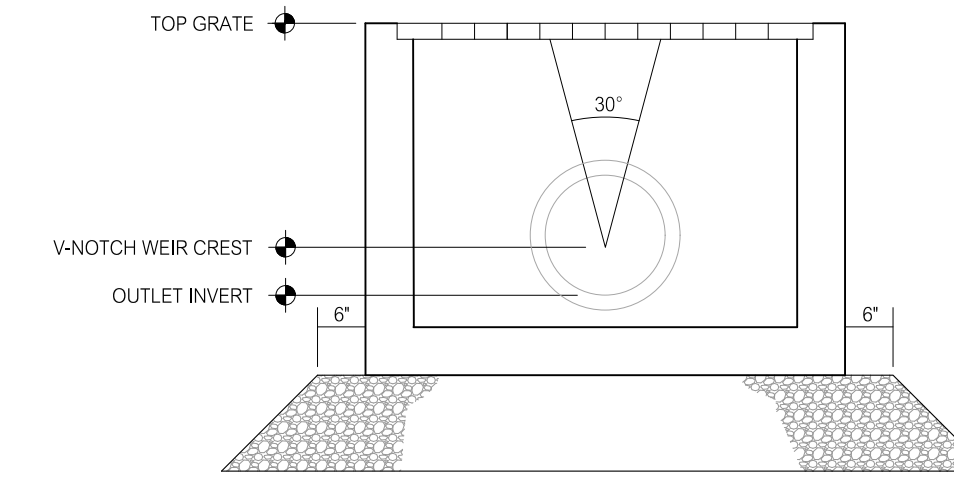
SECTION A-A

MANHOLE FRAME AND COVER
NOT TO SCALE

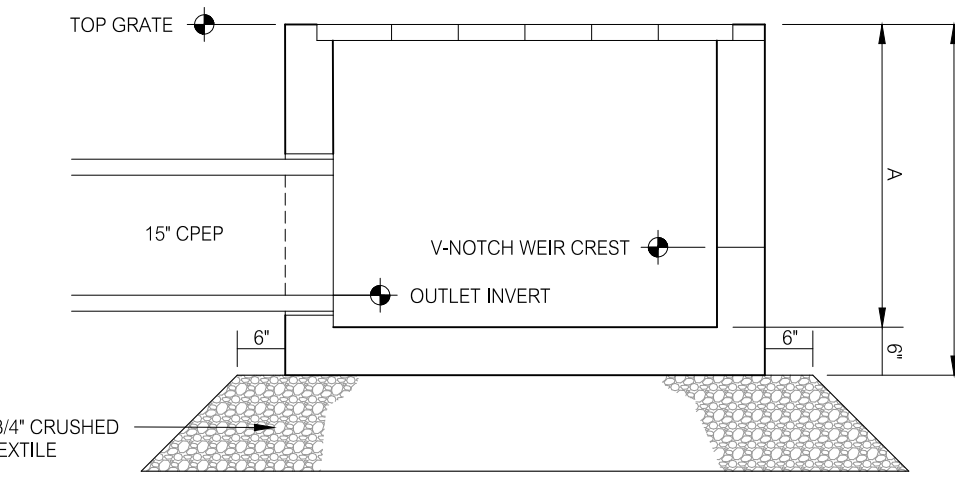
NOTES:
1. HEAVY DUTY, WATER-TIGHT, BOLTED COVER MANHOLE FRAME AND COVER PATTERN NUMBER 1009-4692, CAMPBELL FOUNDRY COMPANY, NORTH HAVEN, CONNECTICUT OR APPROVED EQUAL.
2. THE DESIGNATION 'SEWER' SHALL BE CAST IN THE MANHOLE COVER.



PLAN



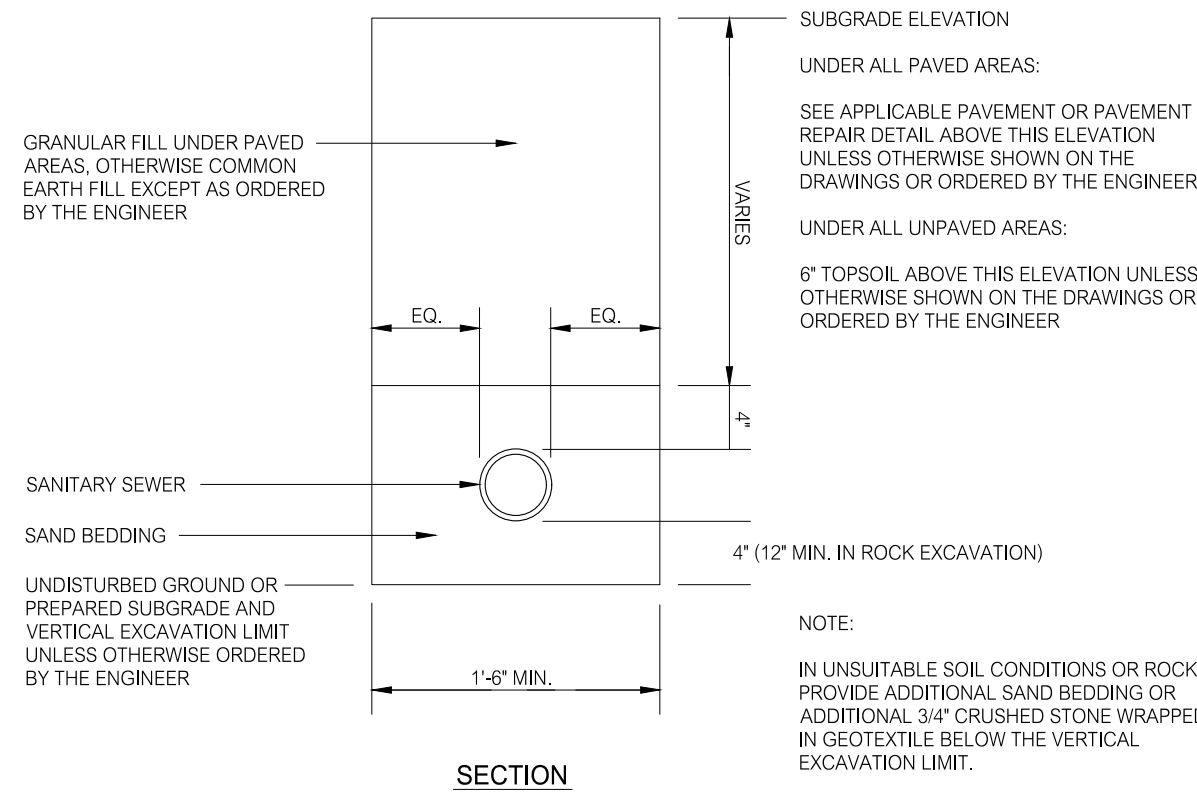
FRONT ELEVATION



SECTION A-A

PRECAST CONCRETE OUTLET CONTROL STRUCTURE
NOT TO SCALE

STRUCTURE	OUTLET CONTROL STRUCTURE ELEVATIONS AND DIMENSIONS				
	V-NOTCH WEIR CREST	OUTLET INVERT	TOP GRATE	A	B
OCS 1	30.50	30.00	32.83	3.17	3.67
OCS 2	23.00	22.50	24.50	2.33	2.83

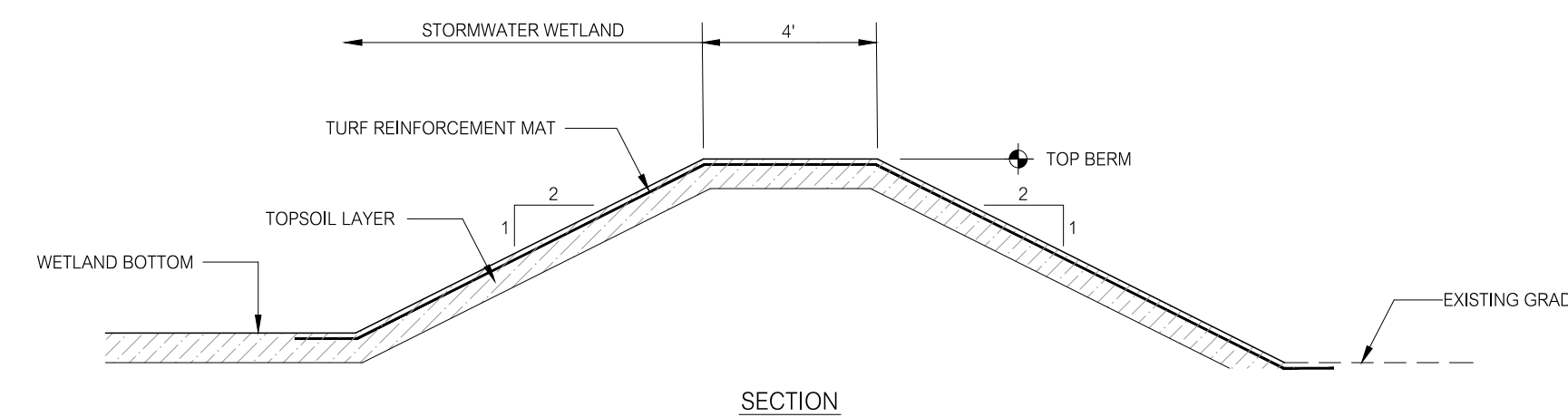


SECTION

SANITARY SEWER TRENCH
NOT TO SCALE

NOTE:
SEE APPLICABLE PAVEMENT OR PAVEMENT REPAIR DETAIL ABOVE THIS ELEVATION UNLESS OTHERWISE SHOWN ON THE DRAWINGS OR ORDERED BY THE ENGINEER.
UNDER ALL UNPAVED AREAS:
6" TOPSOIL ABOVE THIS ELEVATION UNLESS OTHERWISE SHOWN ON THE DRAWINGS OR ORDERED BY THE ENGINEER.

NOTE:
IN UNSUITABLE SOIL CONDITIONS OR ROCK, PROVIDE ADDITIONAL SAND BEDDING OR ADDITIONAL 3/4" CRUSHED STONE WRAPPED IN GEOTEXTILE BELOW THE VERTICAL EXCAVATION LIMIT.



SECTION

TYPICAL STORMWATER WETLAND BERM
NOT TO SCALE

STORMWATER WETLAND CONSTRUCTION NOTES:

- THE CONSTRUCTION OF THE STORMWATER WETLANDS SHALL BE OVERSEEN BY A PROFESSIONAL WETLAND SCIENTIST.
- THE STORMWATER WETLAND BOTTOM ELEVATIONS MAY BE LOWERED AS DETERMINED BY THE PROFESSIONAL WETLAND SCIENTIST BASED ON FIELD CONDITIONS.
- THE INSTALLATION OF ALL PLANT MATERIAL INCLUDING THE PLANTING LOCATIONS SHALL BE DETERMINED BY THE PROFESSIONAL WETLAND SCIENTIST.
- PERMANENT SEEDING SHALL BE ACCOMPLISHED BETWEEN APRIL 15 AND JUNE 15 OR AUGUST 15 AND SEPTEMBER 15 UNLESS A TEMPORARY WATERING PLAN IS SUBMITTED BY THE CONTRACTOR AND APPROVED BY THE PROFESSIONAL WETLAND SCIENTIST.
- SHOULD PERMANENT SEEDING NOT BE ACCOMPLISHED WITHIN THE DATES SPECIFIED ABOVE, ALL DISTURBED AREAS SHALL BE SEED WITH THE TEMPORARY SEED MIXTURE SPECIFIED ON THIS SHEET AND TEMPORARY STRAW MULCH SHALL BE INSTALLED AT A RATE OF 90 POUNDS PER 1,000 SQUARE FEET OVER ALL TEMPORARY SEEDING AREAS.
- PERMANENT SEED MIXTURE SHALL BE AS SPECIFIED BELOW.
- THE STORMWATER WETLANDS SHALL BE PLANTED IN ACCORDANCE WITH THE WETLAND PLANTING SCHEDULES BELOW. THE INTERIOR SLOPES OF THE STORMWATER WETLANDS SHALL BE OVERSEED WITH A SEED MIXTURE CONTAINING SPECIES NATIVE TO NEW ENGLAND SUCH AS THE NEW ENGLAND CONSERVATION WILDLIFE SEED MIXTURE PROVIDED BY NEW ENGLAND WETLAND PLANTS, INC., AMHERST, MASSACHUSETTS, OR A SEED MIXTURE APPROVED BY THE PROFESSIONAL WETLAND SCIENTIST.
- THE EXTERIOR SLOPES OF THE STORMWATER WETLANDS SHALL BE PLANTED IN ACCORDANCE WITH THE SHRUB PLANTING SCHEDULE BELOW. THE PLANT MATERIAL QUANTITIES SHALL BE AS SPECIFIED BY THE PROFESSIONAL WETLAND SCIENTIST.

TEMPORARY SEED MIXTURE

	POUNDS PER ACRE	POUNDS PER 1,000 SQUARE FEET
ANNUAL RYEGRASS OR	40	1.00
PERENNIAL RYEGRASS OR	40	1.00
WINTER RYE	120	3.00

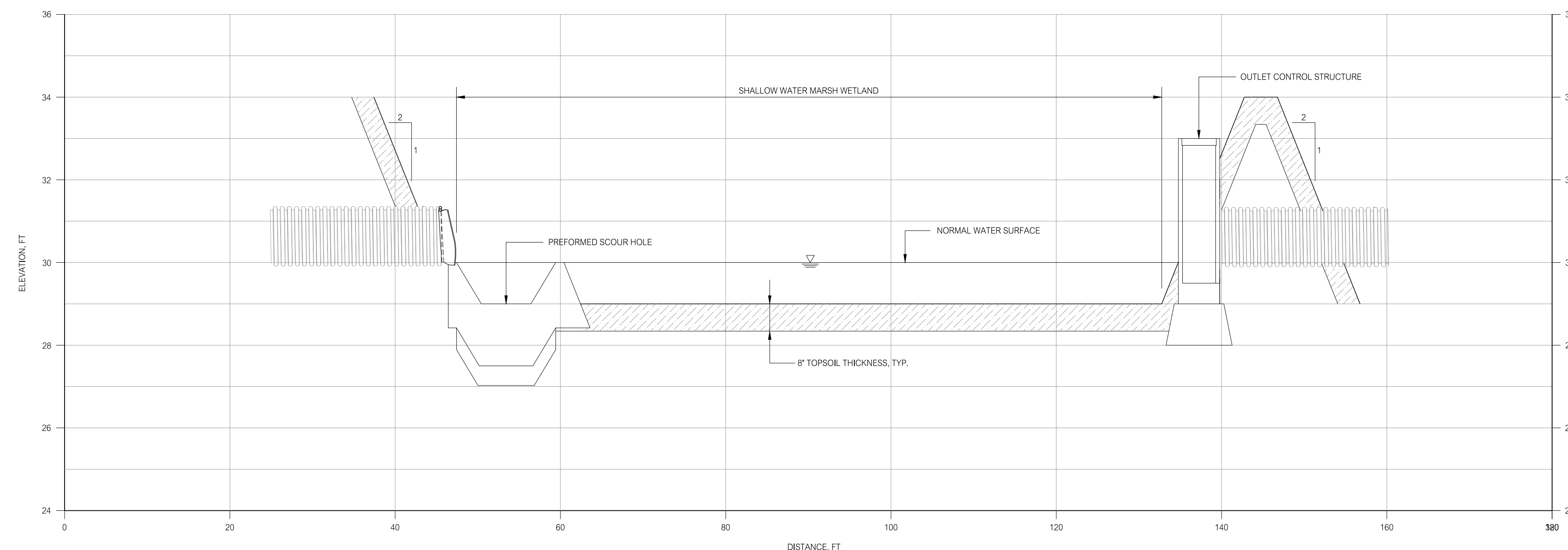
PERMANENT SEED MIXTURE

	POUNDS PER ACRE	POUNDS PER 1,000 SQUARE FEET
CREEPIING RED FESCUE	20	0.45
REDTOP	2	0.05
TALL FESCUE OR SMOOTH BROMEGRASS	40	0.45
TOTAL	42	0.95

WETLAND PLANT LIST STORMWATER WETLAND 1			
SYMBOL	QUANTITY	COMMON NAME	BOTANICAL NAME
SA	250	AMERICAN BURREED	Sparganium americanum
SL	100	ARROWHEAD	Sagittaria latifolia
PC	250	PICKERELWEED	Pontederia cordata
SV	50	SOFT STEM BULRUSH	Scirpus validus

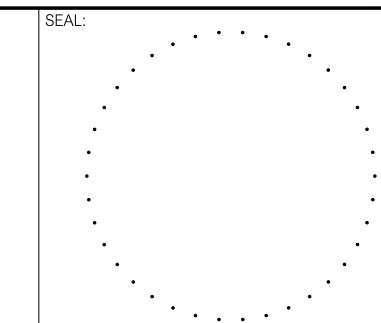
WETLAND PLANT LIST STORMWATER WETLAND 2			
SYMBOL	QUANTITY	COMMON NAME	BOTANICAL NAME
SA	550	AMERICAN BURREED	Sparganium americanum
SL	250	ARROWHEAD	Sagittaria latifolia
PC	550	PICKERELWEED	Pontederia cordata
SV	150	SOFT STEM BULRUSH	Scirpus validus

STORMWATER WETLAND EXTERIOR SLOPE SHRUB PLANT LIST				
SYMBOL	QUANTITY	BOTANICAL NAME	COMMON NAME	SIZE
CS	TBD	RED OSIER DOGWOOD	Cornus sericea	4 FT
IV	TBD	WINTERBERRY	Ilex verticillata	4 FT
AC	TBD	SHADBLow SERVICEBERRY	Amelanchier canadensis	4 FT



TYPICAL STORMWATER WETLAND CROSS SECTION
SCALE: 1"=10' H
1"= 2' V

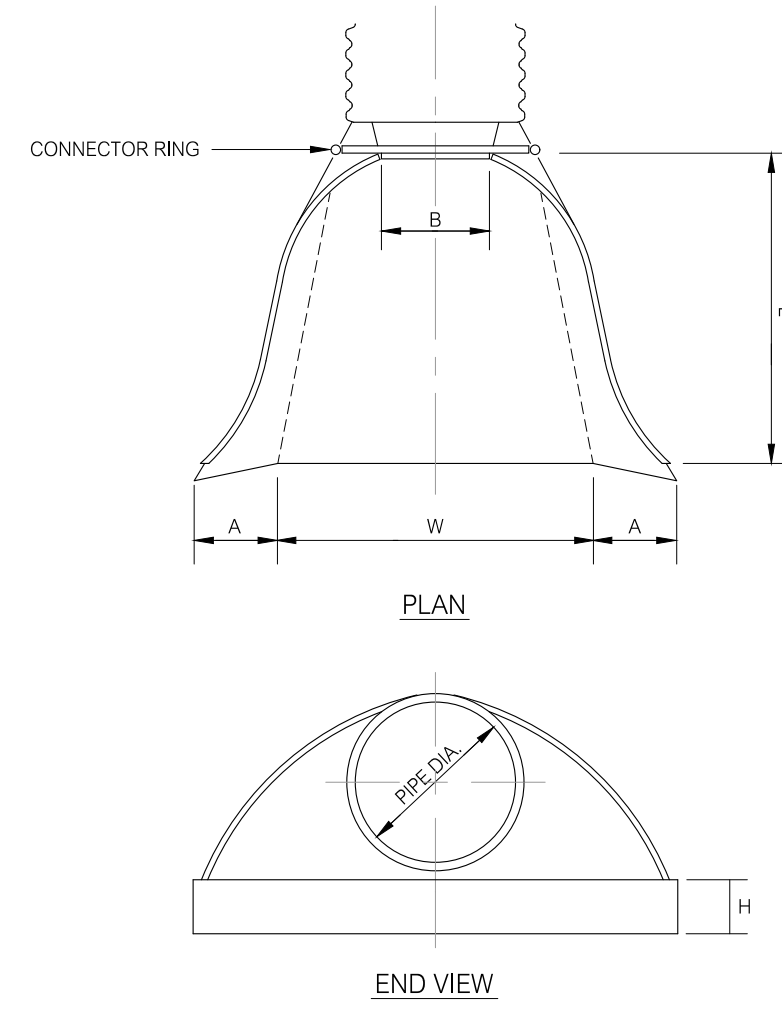
LAND
OF
GEORGE C. FIELD COMPANY, INC.
BOKUM ROAD
ESSEX, CONNECTICUT



PREPARED BY:
Summer Hill
Civil Engineers & Land Surveyors, P.C.
60 Wall Street
P.O. Box 718
Madison, Connecticut 06443-0708
Telephone: (203) 245-0722

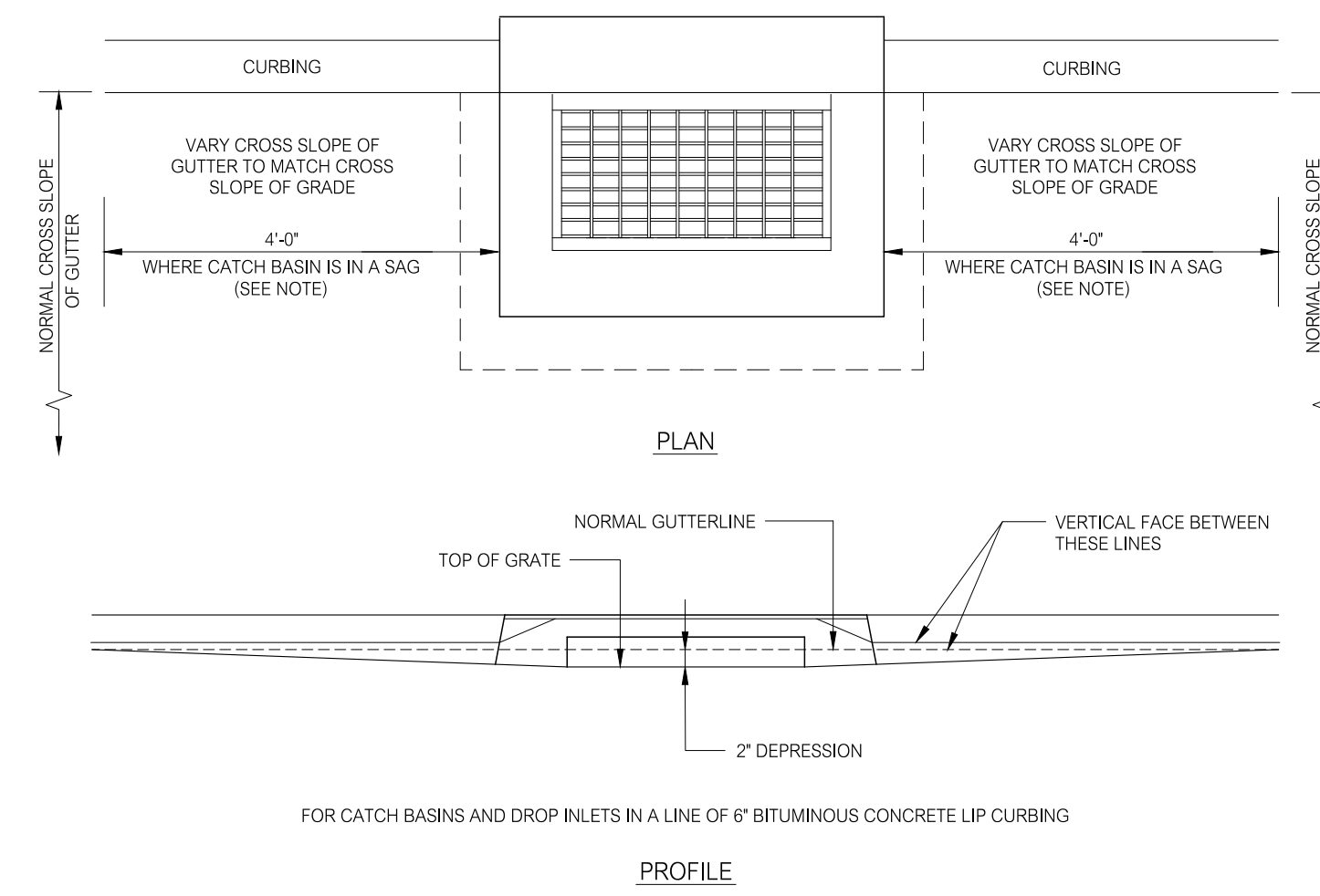
PROJECT: BOKUM ROAD BUSINESS PARK
BOKUM ROAD
ESSEX, CONNECTICUT
DATE: 7-1-21
SCALE: AS NOTED
DESIGNED: MJO
CHECKED: LJM
SHEET: DETAILS
PROJECT NO.: 20-50
SHEET NO.: C3.3

NO.	DATE	DESCRIPTION
9-13-21		REVIEW COMMENTS
8-15-21		MISCELLANEOUS
		REVISIONS



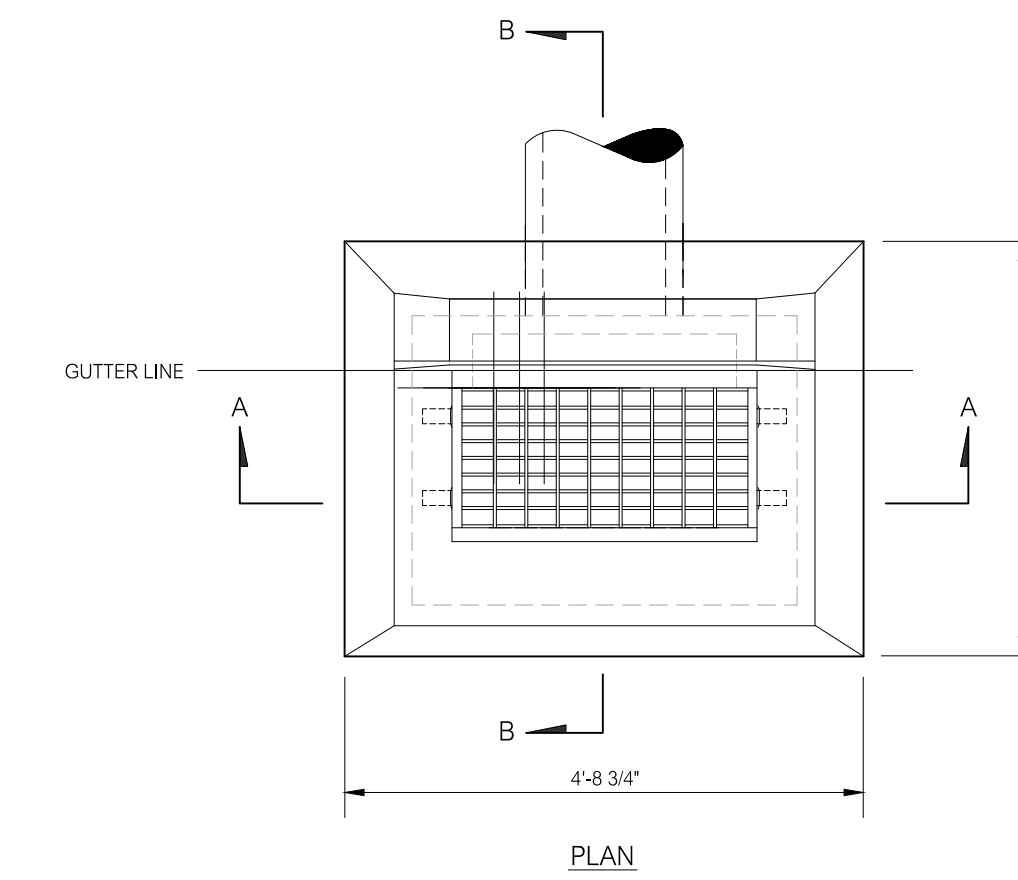
DIMENSIONS FOR METAL CULVERT END						
PIPE DIA.	A MAX	B MAX	H ± 1"	L ± 1 1/2"	W ± 2"	THICKNESS (INCHES)
12	6	6	6	21	24	.064
15	7	8	6	26	30	.064
18	8	10	6	31	36	.064
21	9	12	6	36	42	.064
24	10	13	6	41	48	.064
30	12	16	8	51	60	.079
36	14	19	9	60	72	.079

METAL CULVERT END
NOT TO SCALE

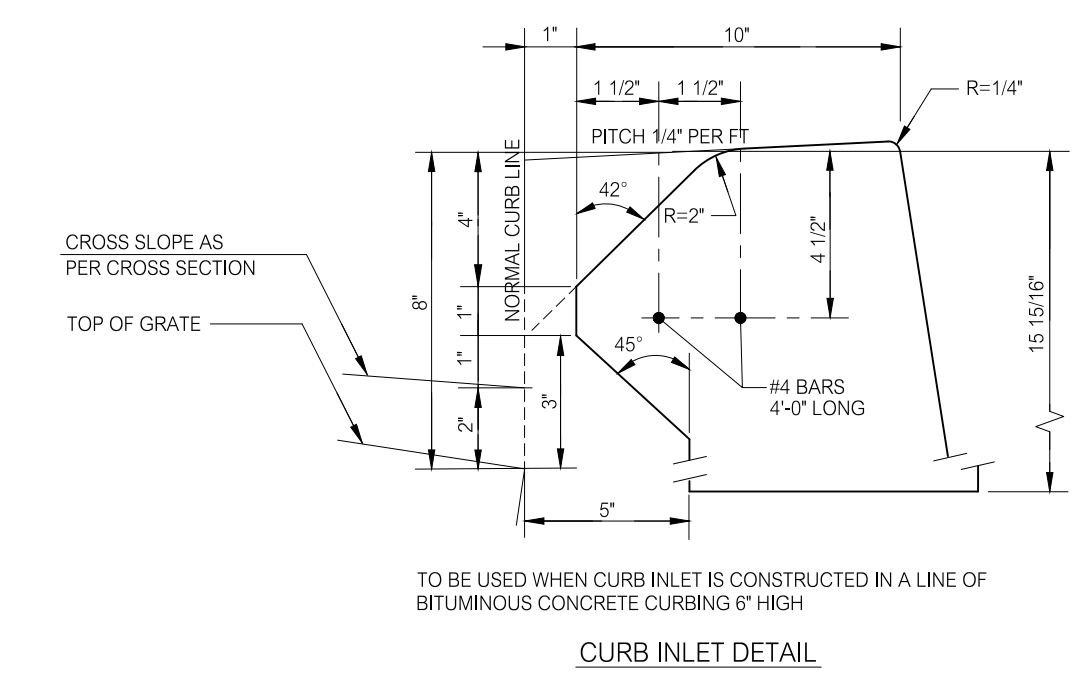


DETAILS OF DEPRESSED GUTTER STRIP
NOT TO SCALE

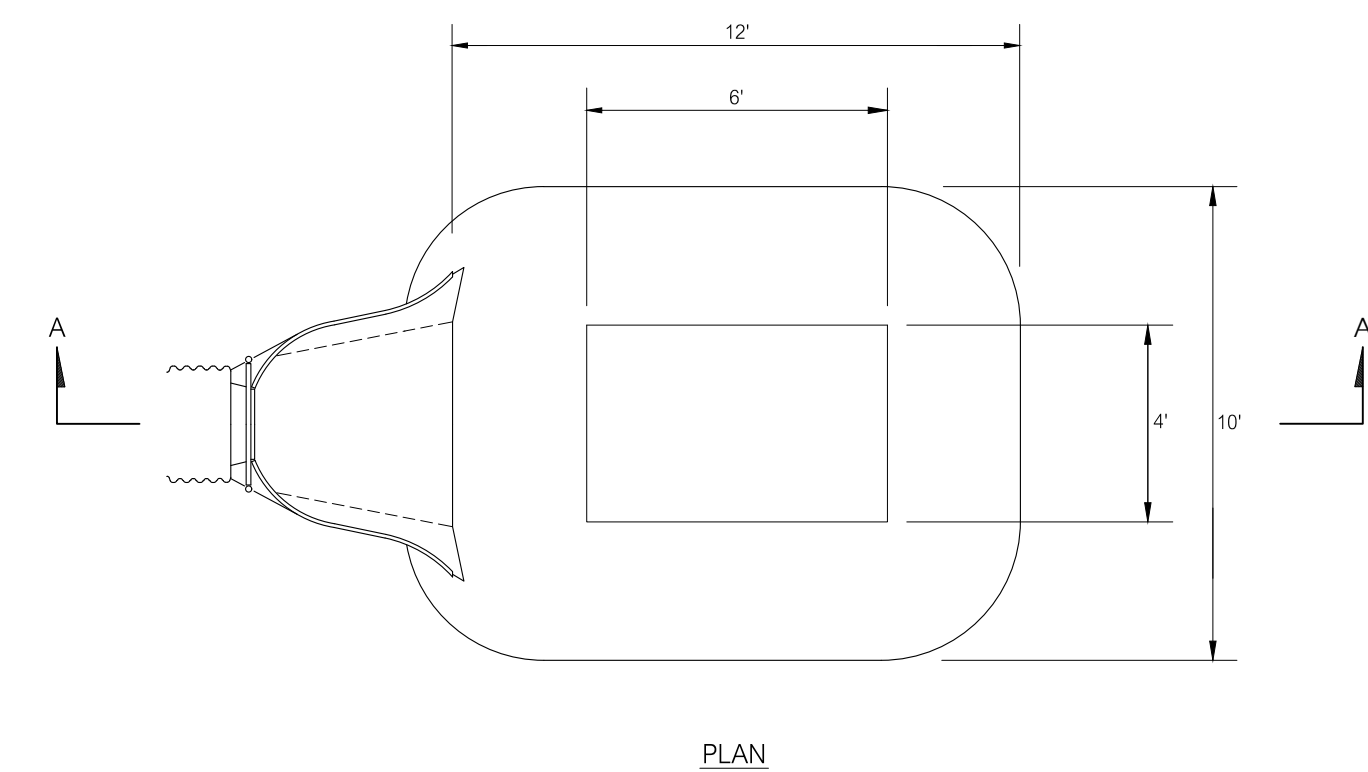
NOTE:
6'-0" ON UPGRADE SIDE OF CONTINUOUS GRADE, 1'-0" ON DOWNGRADE SIDE OF CONTINUOUS GRADE OR AS DIRECTED.



TYPE "C" CATCH BASIN
NOT TO SCALE

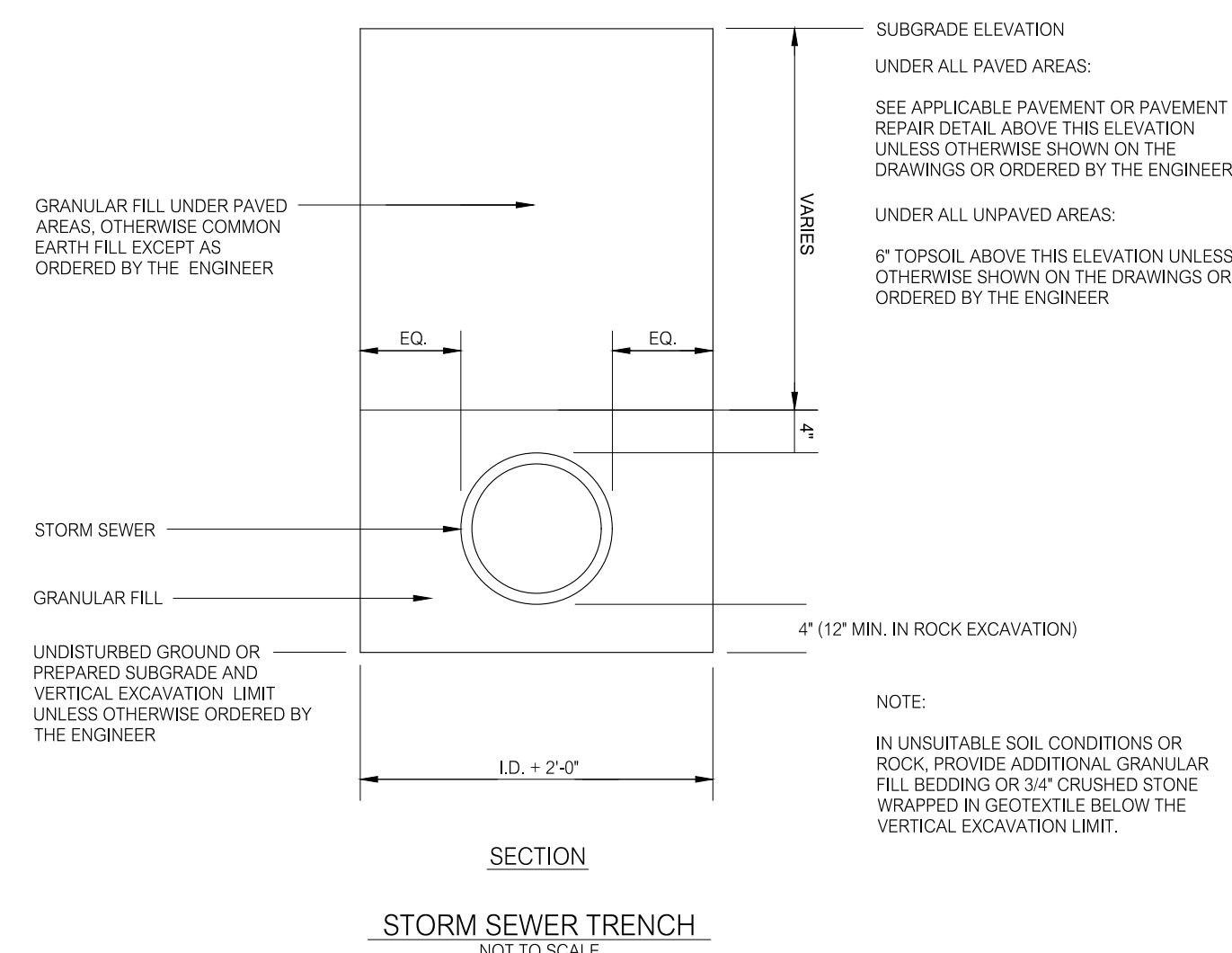


CURB INLET DETAIL

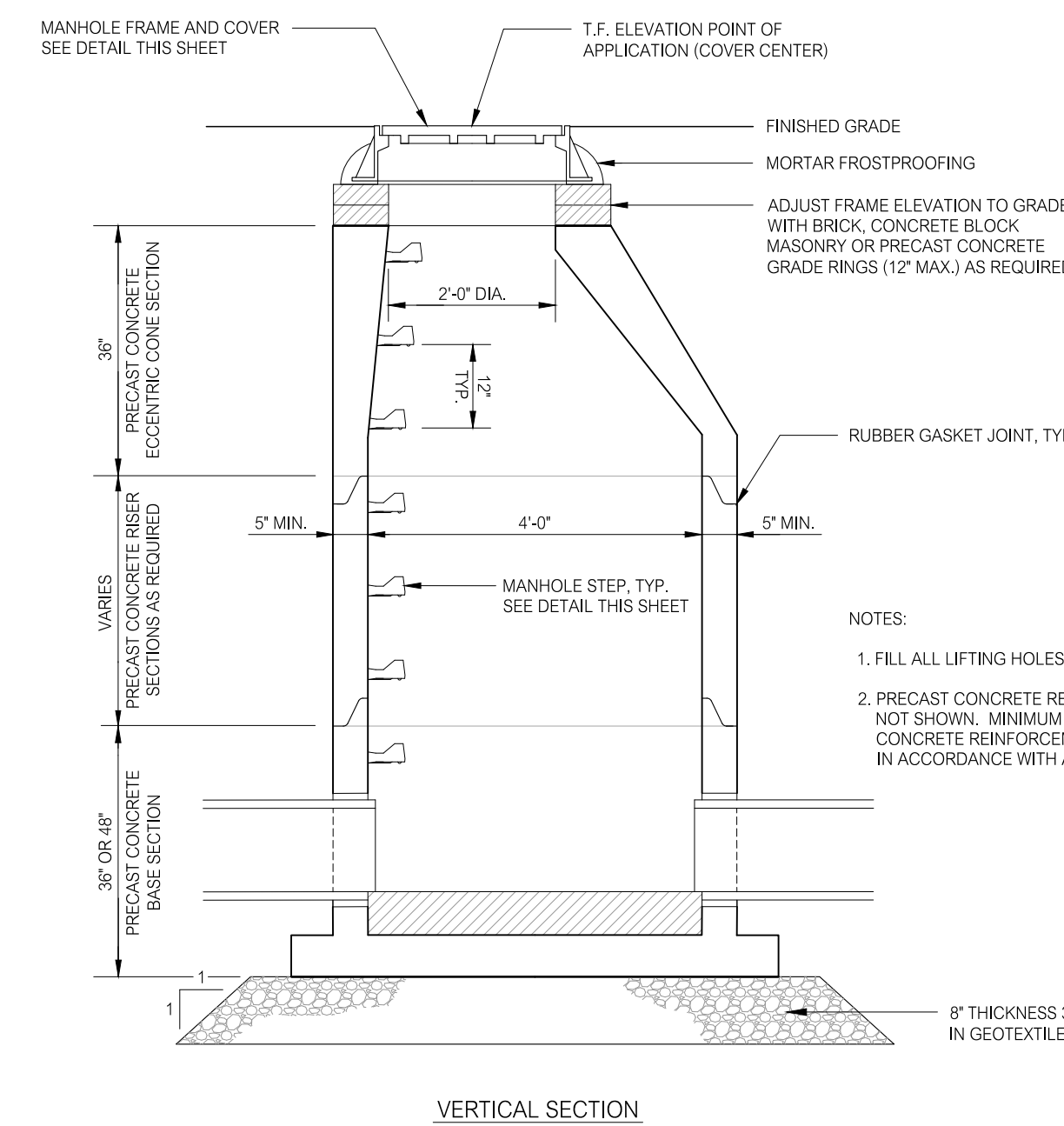


PREFORMED SCOUR HOLE
NOT TO SCALE

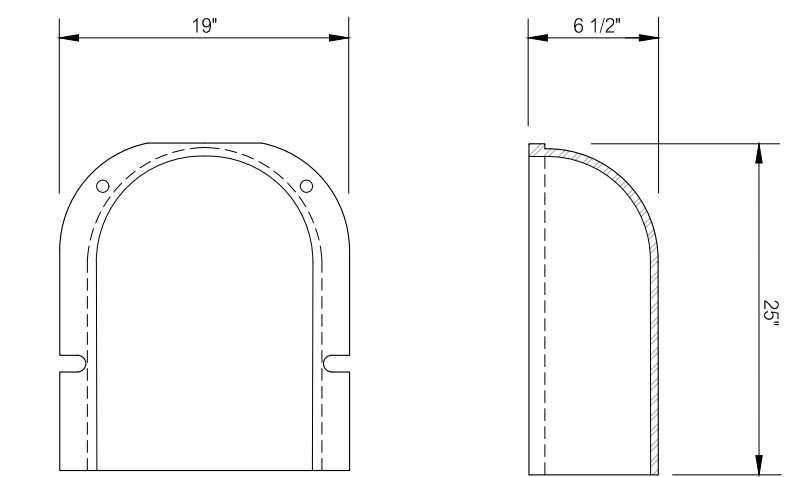
$S_p =$ { MAX. INSIDE PIPE SPAN (NON-CIRCULAR SECTIONS)
INSIDE PIPE DIAMETER (CIRCULAR SECTIONS)
 $R_p =$ { MAX. INSIDE PIPE RISE (NON-CIRCULAR SECTIONS)
INSIDE PIPE DIAMETER (CIRCULAR SECTIONS)
 $D =$ { 12 IN. MODIFIED RIPRAP
18 IN. INTERMEDIATE RIPRAP
36 IN. STANDARD RIPRAP
TYPE 1 $F = 0.5 R_p$
TYPE 2 $F = R_p$
 $C = 3S_p + 6F$
 $B = 2S_p + 6F$



STORM SEWER TRENCH
NOT TO SCALE

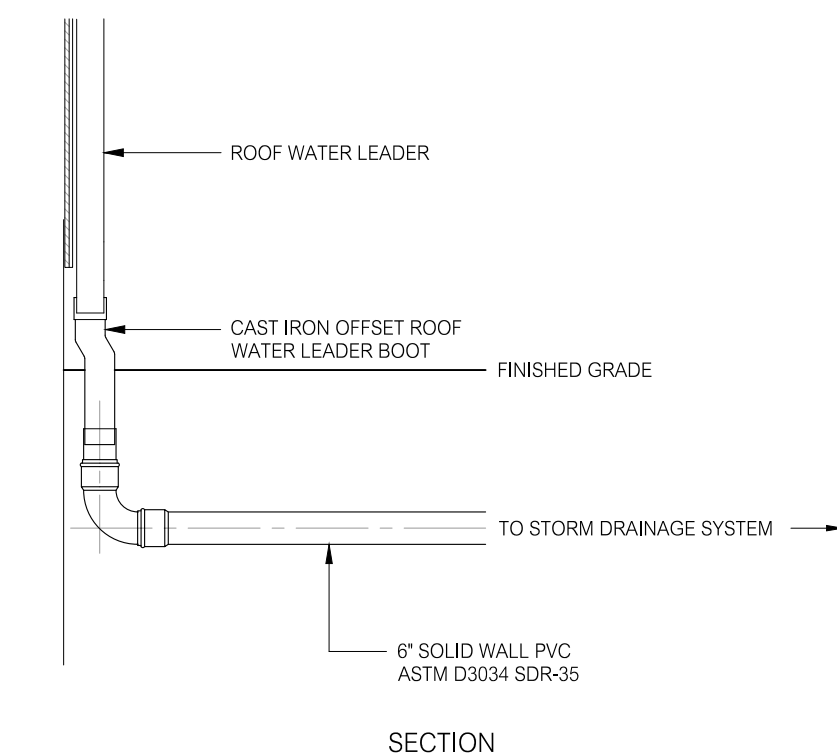


PRECAST CONCRETE STORM MANHOLE
NOT TO SCALE



CAST IRON CATCH BASIN TRAP
NOT TO SCALE

NOTE:
CAST IRON CATCH BASIN TRAP MODEL R-3701-15 NEEHAH FOUNDRY, NEEHAH WISCONSIN OR APPROVED EQUAL

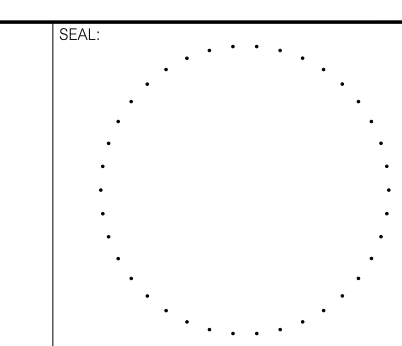


BUILDING ROOF WATER LEADER CONNECTION
NOT TO SCALE

NO.	DATE	DESCRIPTION
1	9-13-21	REVIEW COMMENTS
2	8-15-21	MISCELLANEOUS
3		DESCRIPTION

REVISIONS	TITLE
	LAND OF
	GEORGE C. FIELD COMPANY, INC.
	BOKUM ROAD
	ESSEX, CONNECTICUT

LAND OF
GEORGE C. FIELD COMPANY, INC.
BOKUM ROAD
ESSEX, CONNECTICUT



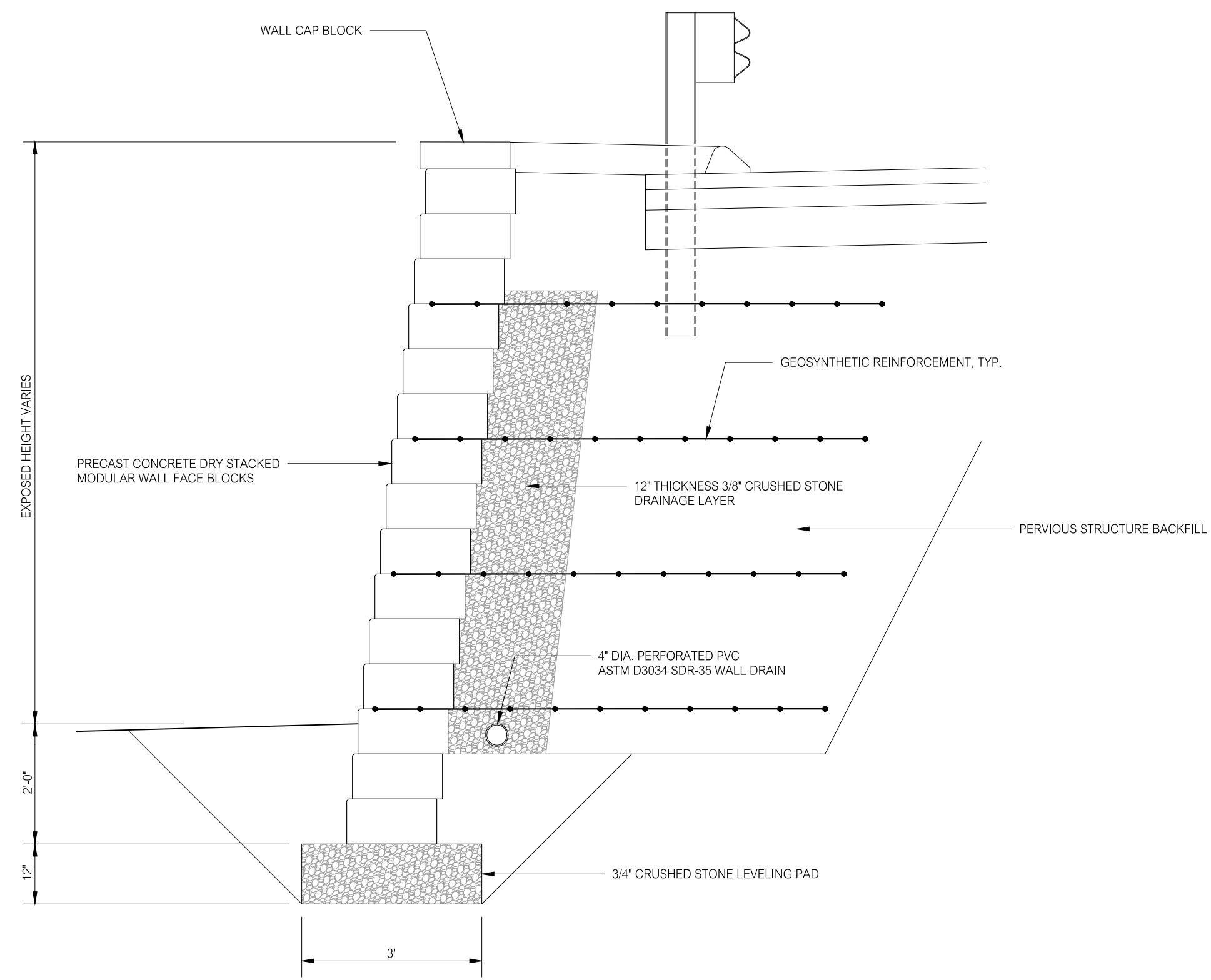
PREPARED BY:
Summer Hill
Civil Engineers & Land Surveyors, P.C.
60 Wall Street
P.O. Box 708
Madison, Connecticut 06443-0708
Telephone: (203) 245-0722

DATE:	SCALE:	DESIGNED:	CHECKED:	FIELD BOOK:	PROJECT NO.:	SHEET NO.:
7-1-21	AS NOTED	MJO	LJM		20-50	C3.4

PROJECT: BOKUM ROAD BUSINESS PARK
BOKUM ROAD
ESSEX, CONNECTICUT

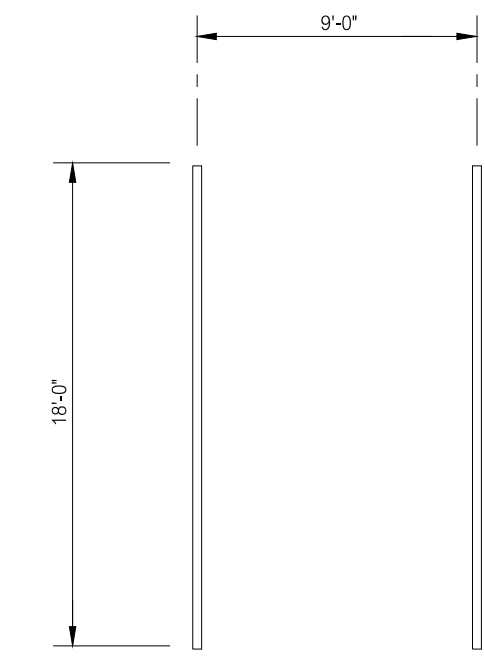
DETAILS

C3.4



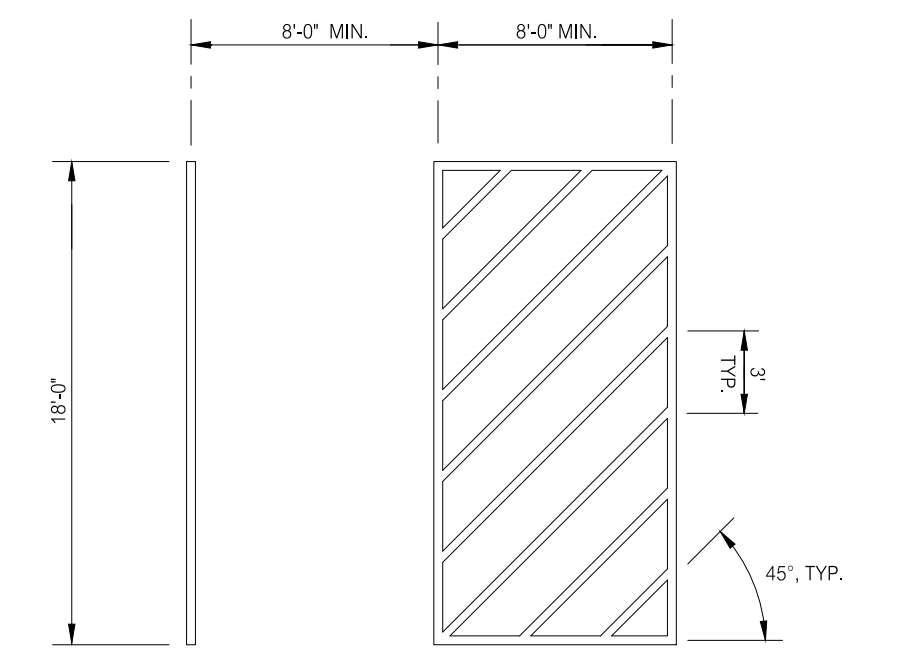
TYPICAL SOIL REINFORCED SEGMENTAL RETAINING WALL SECTION
1/2"=1'-0"

- NOTES:
1. THE SITE RETAINING WALLS DEPICTED ON THE DRAWINGS WILL REQUIRE THE APPROVAL OF A BUILDING PERMIT APPLICATION BY THE TOWN OF ESSEX BUILDING DEPARTMENT PRIOR TO BEGINNING CONSTRUCTION OF THE WALLS.
 2. SUBMIT DESIGN COMPUTATIONS AND CONSTRUCTION DRAWINGS PREPARED BY A PROFESSIONAL ENGINEER LICENSED IN THE STATE OF CONNECTICUT TO THE TOWN OF ESSEX BUILDING DEPARTMENT FOR ALL SITE RETAINING WALLS.



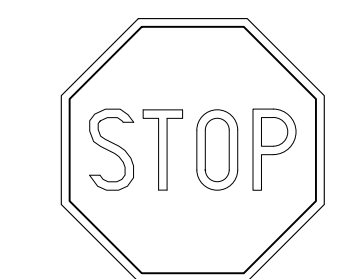
STANDARD PARKING STALL
NOT TO SCALE

NOTE:
ALL LINES SHALL BE 4\"/>



VAN RESERVED PARKING STALL
NOT TO SCALE

- NOTES:
1. ALL LINES SHALL BE 4\"/>
 - 2. THE SLOPE OF THE PAVEMENT SURFACE WITHIN THE LIMITS OF THE RESERVED PARKING SPACE SHALL BE NO GREATER THAN 1:50 IN ANY DIRECTION.
 - 3. STALL AND HATCHED AISLE WIDTHS SHOWN ARE MINIMUM WIDTHS.



SIGN NO.: R1 (31-0552)
SIZE: 30\"/>

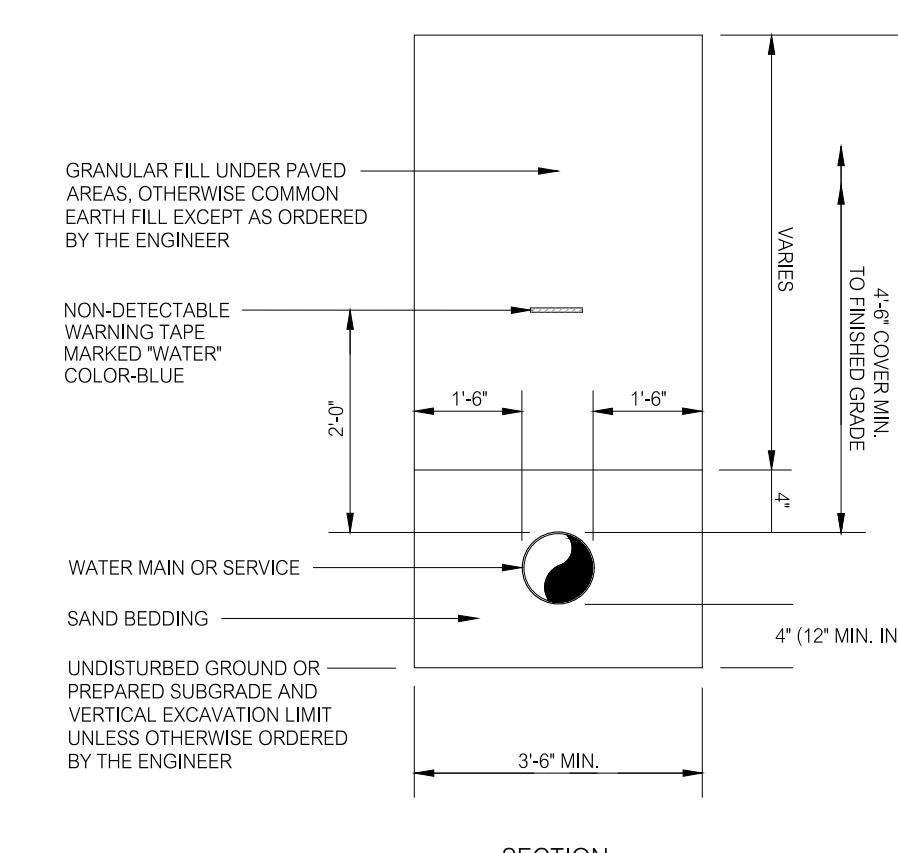
STOP SIGN
NOT TO SCALE



SIGN NO.: R7/R7-RP (31-0662/31-0648)
SIZE: 12\"/>

RESERVED PARKING SPACE SIGNS
NOT TO SCALE

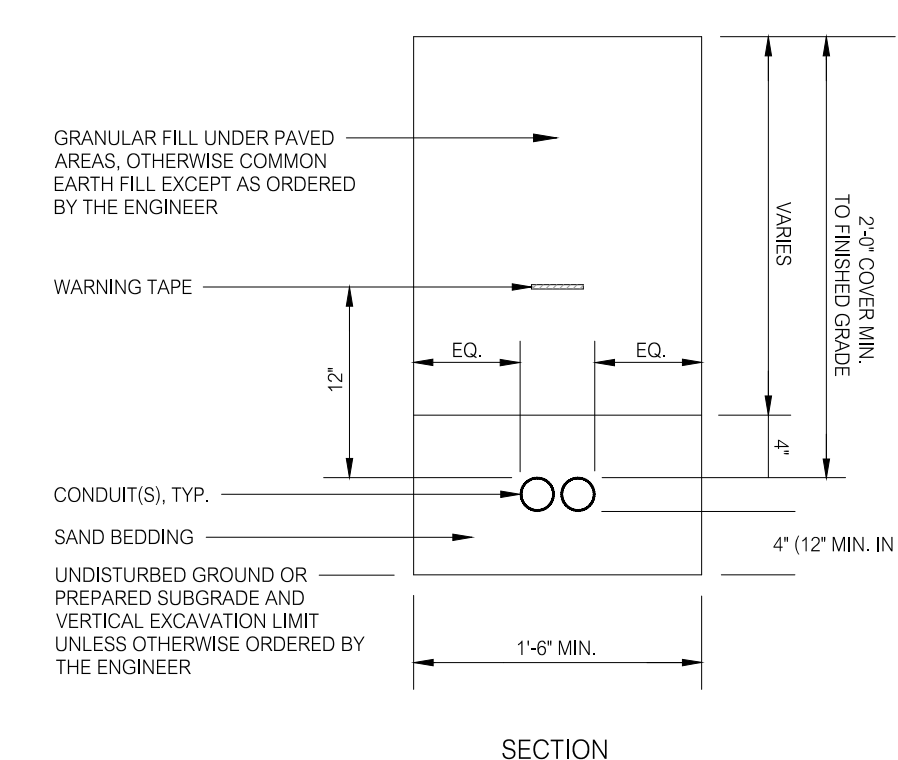
NOTE:
VAN ACCESSIBLE SUBPLATE INSTALLED AT VAN RESERVED PARKING STALLS ONLY.



SECTION
WATER MAIN OR SERVICE TRENCH
NOT TO SCALE

SUBGRADE ELEVATION
UNDER ALL PAVED AREAS:
SEE APPLICABLE PAVEMENT OR PAVEMENT REPAIR DETAIL ABOVE THIS ELEVATION UNLESS OTHERWISE SHOWN ON THE DRAWINGS OR ORDERED BY THE ENGINEER
UNDER ALL UNPAVED AREAS:
6\"/>

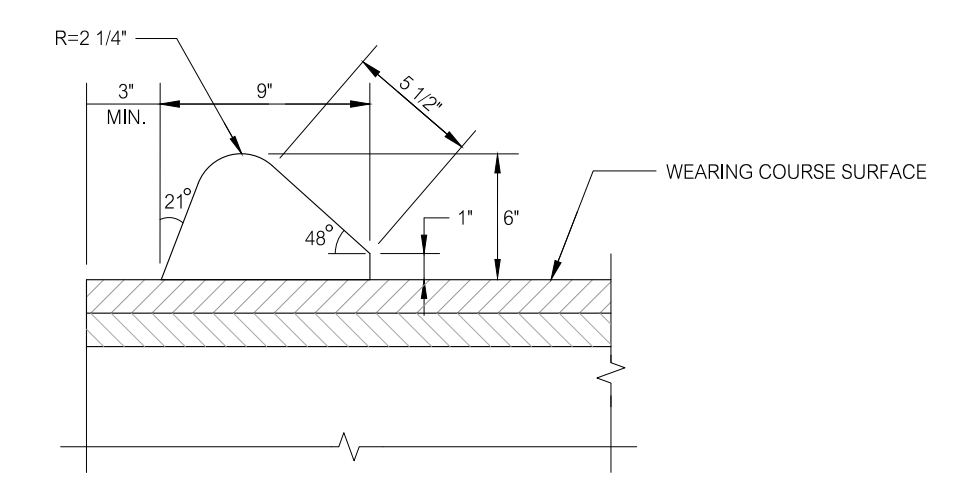
- NOTE:
1. IN UNSUITABLE SOIL CONDITIONS OR ROCK, PROVIDE ADDITIONAL SAND BEDDING OR ADDITIONAL 3/4\"/>



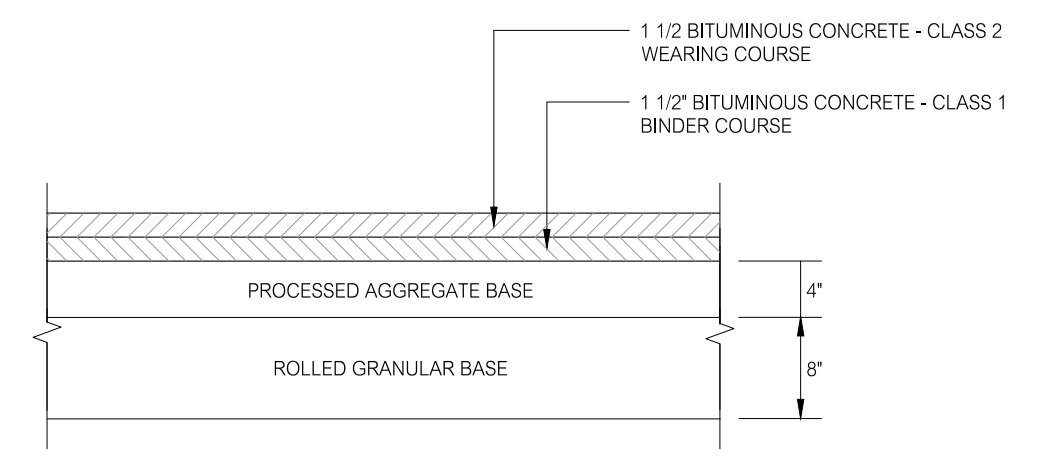
SECTION
POWER AND COMMUNICATIONS CONDUIT TRENCH
NOT TO SCALE

SUBGRADE ELEVATION
UNDER ALL PAVED AREAS:
SEE APPLICABLE PAVEMENT OR PAVEMENT REPAIR DETAIL ABOVE THIS ELEVATION UNLESS OTHERWISE SHOWN ON THE DRAWINGS OR ORDERED BY THE ENGINEER
UNDER ALL UNPAVED AREAS:
6\"/>

- NOTES:
1. IN UNSUITABLE SOIL CONDITIONS OR ROCK, PROVIDE ADDITIONAL SAND BEDDING OR 3/4\"/>



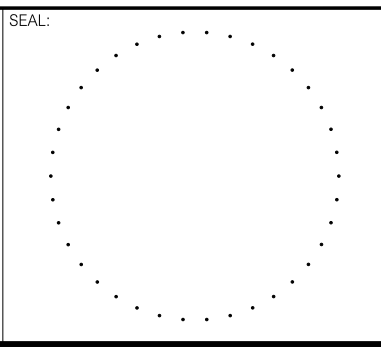
SECTION
BITUMINOUS CONCRETE LIP CURBING
NOT TO SCALE



SECTION
PARKING AREA PAVEMENT SECTION
NOT TO SCALE

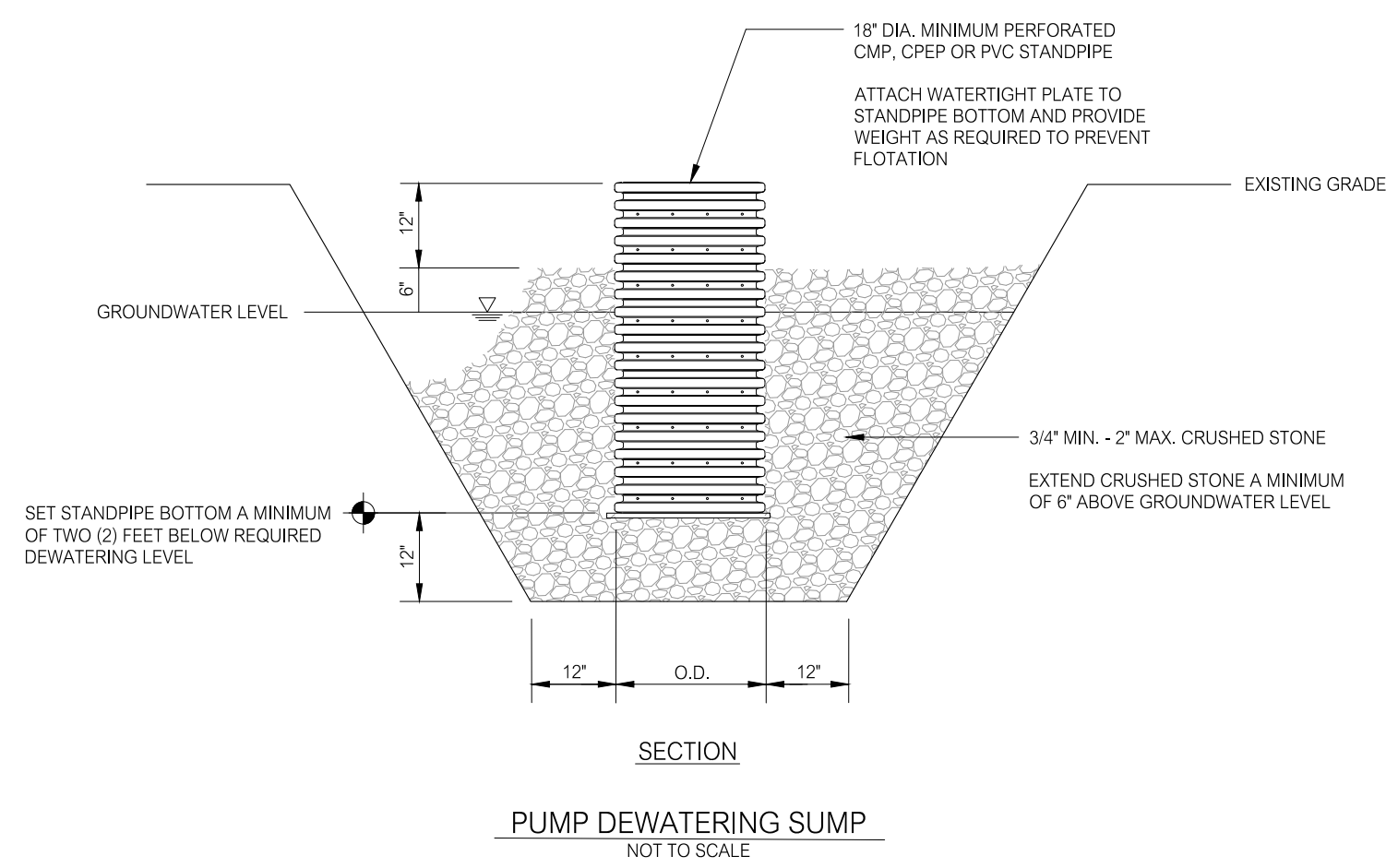
NO.	DATE	DESCRIPTION
1	9-13-21	REVIEW COMMENTS
2	8-15-21	MISCELLANEOUS
		REVISIONS

LAND OF
GEORGE C. FIELD COMPANY, INC.
BOKUM ROAD
ESSEX, CONNECTICUT

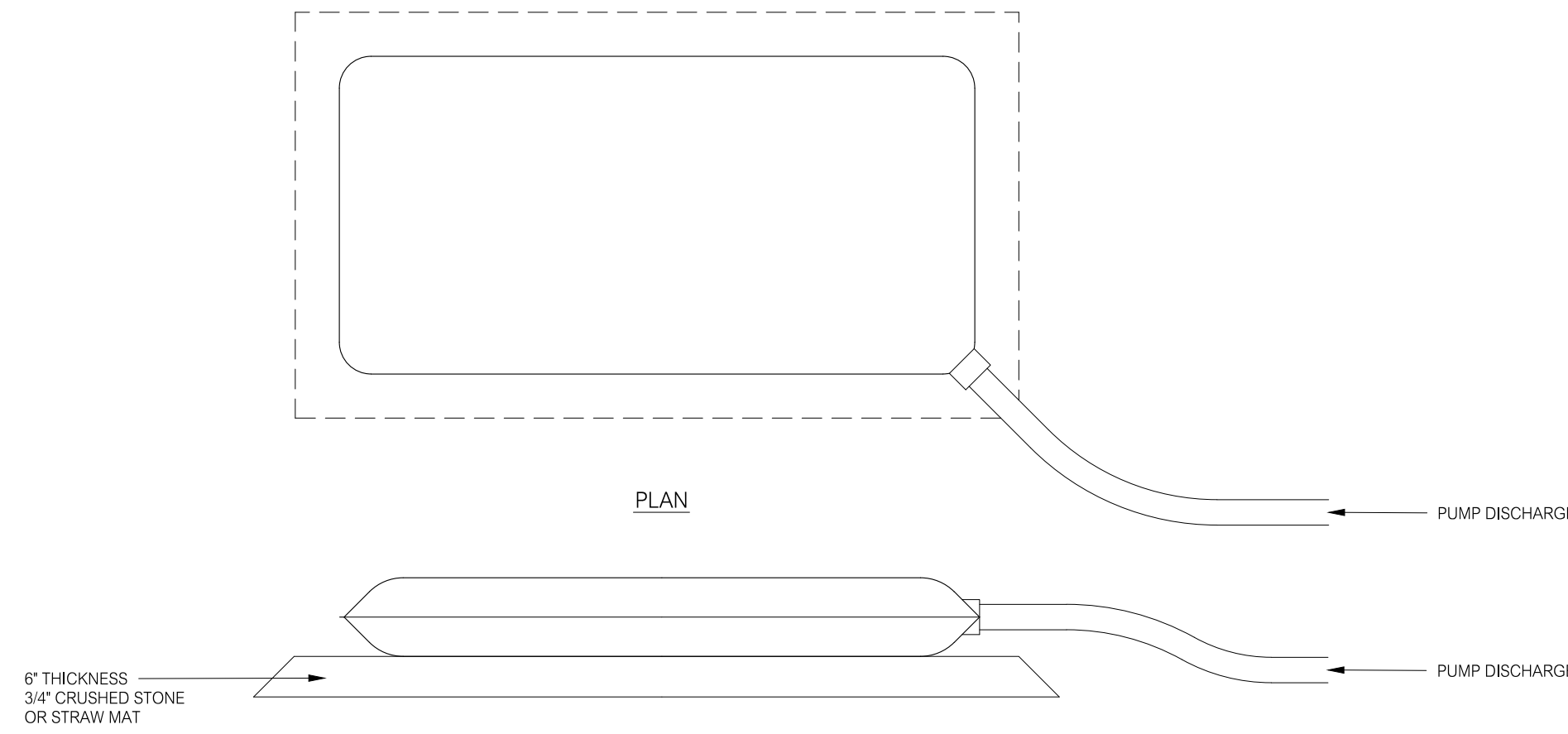


PREPARED BY:
Summer Hill
Civil Engineers & Land Surveyors, P.C.
60 Wall Street
P.O. Box 7108
Madison, Connecticut 06443-0708
Telephone: (203) 245-0722

PROJECT: BOKUM ROAD BUSINESS PARK BOKUM ROAD ESSEX, CONNECTICUT		SHEET NO.: C3.5
DATE: 7-1-21	SCALE: AS NOTED	DESIGNED: MJO CHECKED: LJM
PROJECT NO.: 20-50	FIELD BOOK:	

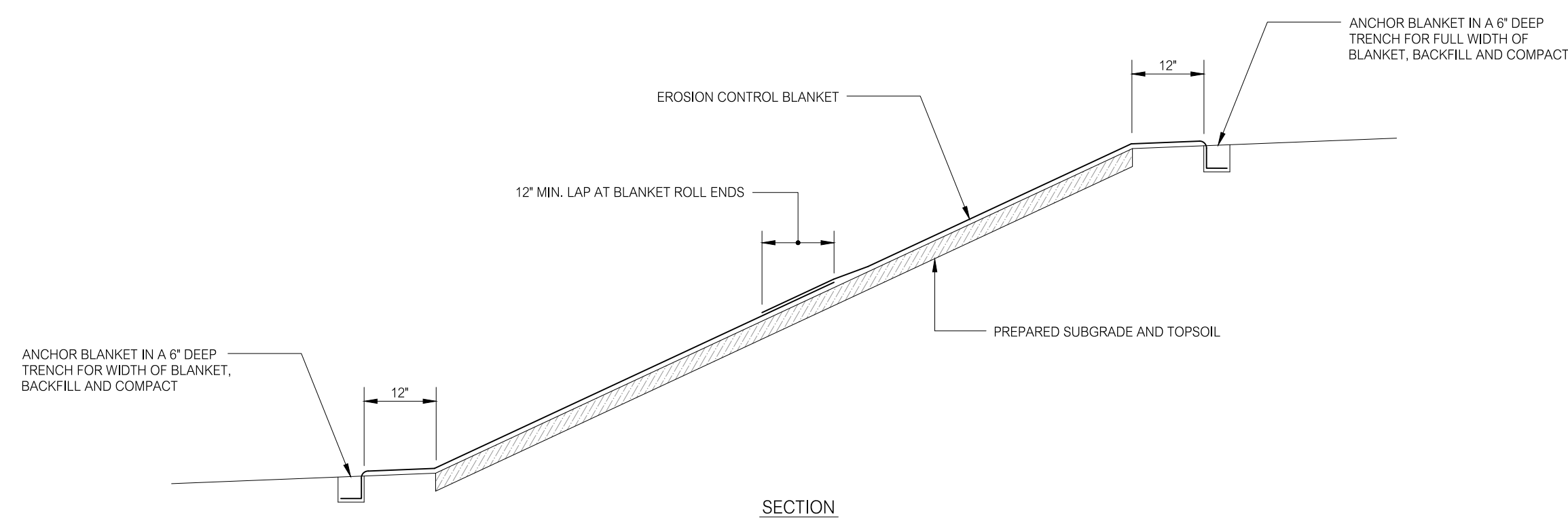


PUMP DEWATERING SUMP
NOT TO SCALE



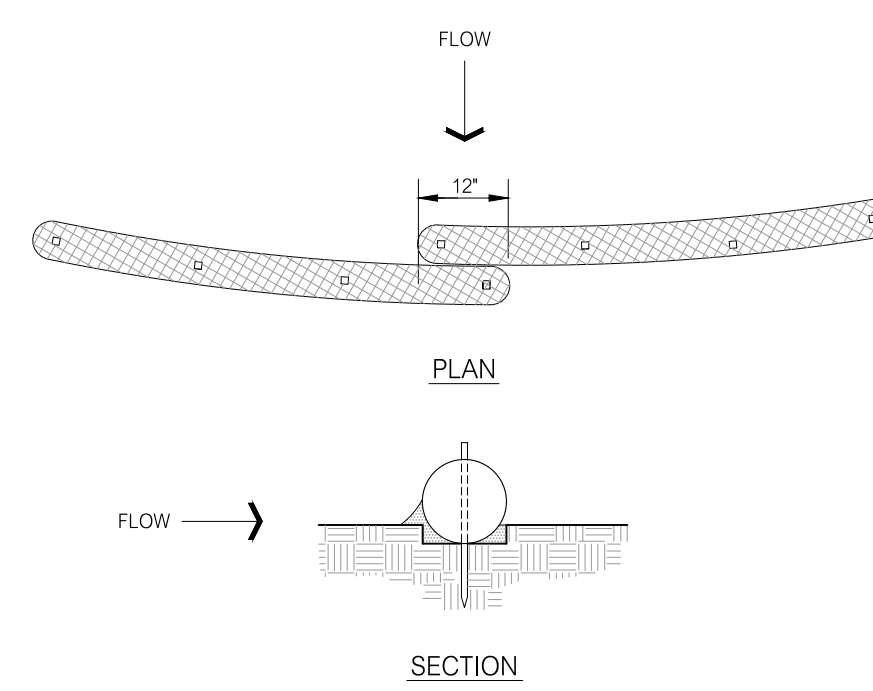
GEOTEXTILE FILTER BAG
NOT TO SCALE

- NOTES:
1. GEOTEXTILE FILTER BAG SHALL BE PLACED IN A LOCATION THAT MINIMIZES INTERFERENCE WITH CONSTRUCTION ACTIVITIES, IS A MINIMUM OF FIFTY (50) FEET FROM WETLANDS, WATERCOURSES AND SURFACE WATER BODIES, IS RELATIVELY LEVEL, PROVIDES FOR THE RELEASE OF FILTERED WATER WITHOUT CAUSING EROSION, AND PROVIDES FOR EASE OF ACCESS BY EQUIPMENT FOR CLEANOUT AND DISPOSAL OF TRAPPED SEDIMENT.
 2. PLACE GEOTEXTILE FILTER BAG ON A 6\"/>



ECB EROSION CONTROL BLANKETS FOR SLOPES
NOT TO SCALE

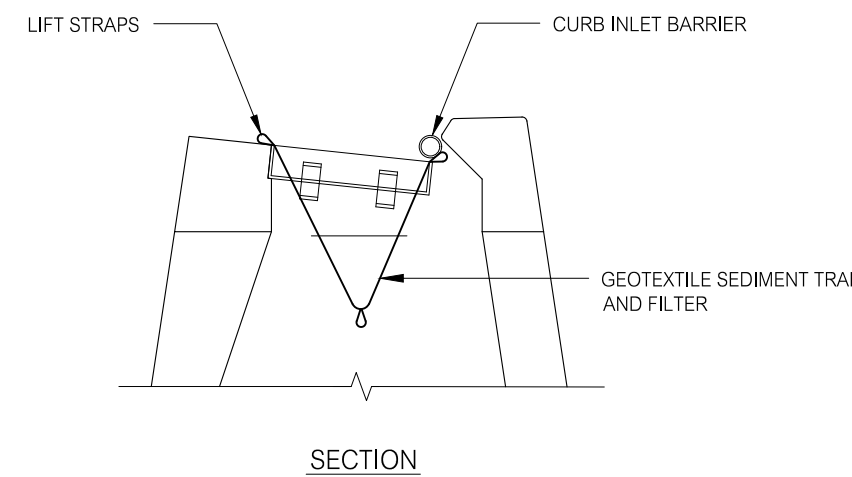
- NOTES:
1. INSTALL EROSION CONTROL BLANKETS ON ALL SLOPES STEEPER THAN 4 HORIZONTAL TO 1 VERTICAL.
 2. AMEND TOPSOIL AS REQUIRED AND SEED PRIOR TO INSTALLATION OF EROSION CONTROL BLANKETS.
 3. INSTALL EROSION CONTROL BLANKETS IN ACCORDANCE WITH THE MANUFACTURERS INSTRUCTIONS.
 4. SEE MANUFACTURERS INSTRUCTIONS FOR STAPLE AND STAPLE PATTERN REQUIREMENTS.



SW STRAW WATTLE BARRIER
NOT TO SCALE

1. EXCAVATE 4\"/>

1. INSPECT BARRIER AT LEAST ONCE PER WEEK AND WITHIN 24 HOURS OF THE END OF A STORM WITH A RAINFALL AMOUNT OF 1/2 INCH OR GREATER.
2. REMOVE ACCUMULATED SEDIMENT WHEN IT REACHES 1/2 THE HEIGHT OF THE BARRIER.

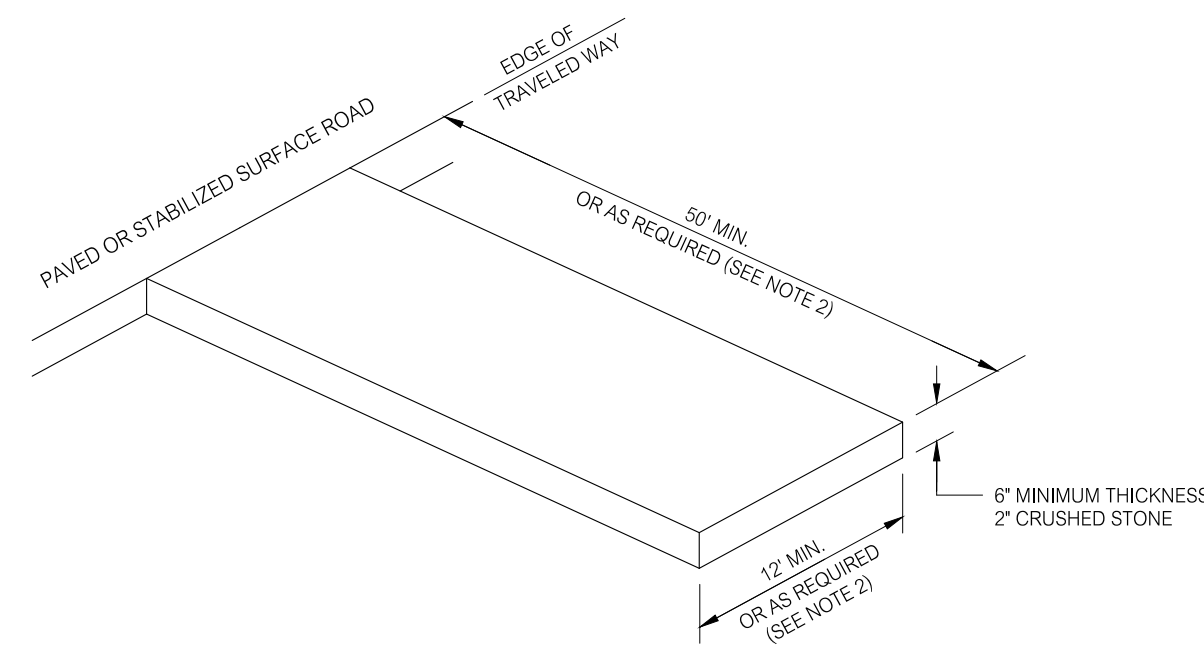


SC SEDIMENTATION CONTROL AT DRAINAGE STRUCTURE
NOT TO SCALE

1. PLACE GEOTEXTILE SEDIMENT TRAP AND FILTER UNDER GRATE AND SET IN FRAME.
2. PLACE CURB INLET BARRIER AGAINST CURB INLET OPENING.

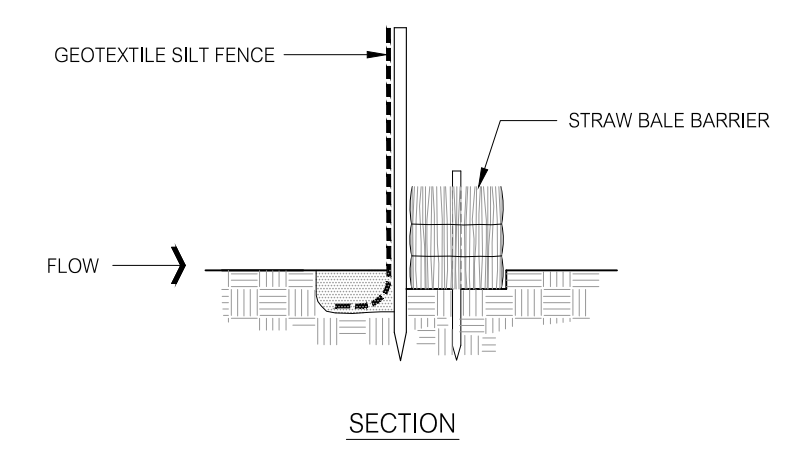
1. INSPECT DRAINAGE STRUCTURE INLETS AT LEAST ONCE PER WEEK AND WITHIN 24 HOURS OF THE END OF A STORM WITH A RAINFALL AMOUNT OF 1/2 INCH OR GREATER.
2. REMOVE SEDIMENT TRAP AND FILTER WHEN 1/2 FULL. DISPOSE OF SEDIMENT, CLEAN AND RE-INSTALL THE SEDIMENT TRAP.

NOTE:
TYPE \"C\" CATCH BASIN IN LET SHOWN. THIS DETAIL APPLIES TO ALL DRAINAGE STRUCTURE INLET TYPES SHOWN ON THE DRAWINGS.



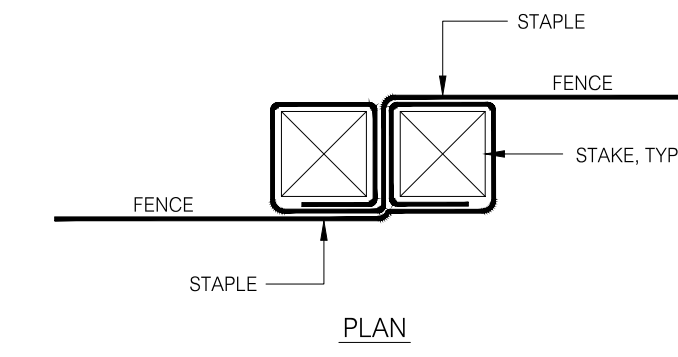
CE CONSTRUCTION ENTRANCE
NOT TO SCALE

- NOTES:
1. CLEAR AND GRUB AREA AND REMOVE TOPSOIL BEFORE PLACEMENT OF CRUSHED STONE LAYER. A GEOTEXTILE MAY BE REQUIRED TO STRENGTHEN SUBGRADE SOILS AND TO PREVENT STONE MOVEMENT AND LOSS OF VOIDS WITHIN THE STONE ENTRANCE WHERE REQUIRED.
 2. LENGTH OF ENTRANCE MAY BE LIMITED BY SITE CONDITIONS. PROVIDE ADEQUATE WIDTH OF ENTRANCE AT ROAD INTERSECTION TO ACCOMMODATE THE TURNING MOVEMENTS OF CONSTRUCTION VEHICLES.
 3. MAINTAIN ENTRANCE SO AS TO PREVENT TRACKING OR WASHING OF SEDIMENT ONTO ROAD. SEDIMENT THAT MAY BE TRACKED OR OTHERWISE DEPOSITED WITHIN THE ROAD SHALL BE REMOVED IMMEDIATELY.
 4. MAINTENANCE MAY INCLUDE THE REQUIREMENT FOR TOP DRESSING THE CRUSHED STONE LAYER OR REPLACING THE FULL DEPTH OF THE CRUSHED STONE LAYER.
 5. SHOULD SITE CONDITIONS BE SUCH THAT SOIL CANNOT BE REMOVED BY VEHICLES TRAVELING OVER THE ENTRANCE, THE TIRES OF VEHICLES MAY HAVE TO BE WASHED PRIOR TO VEHICLES ENTERING THE ROAD. ALL WASH WATER SHALL BE DIRECTED THROUGH AN APPROVED SEDIMENT FILTER OR TO A SEDIMENT BASIN.



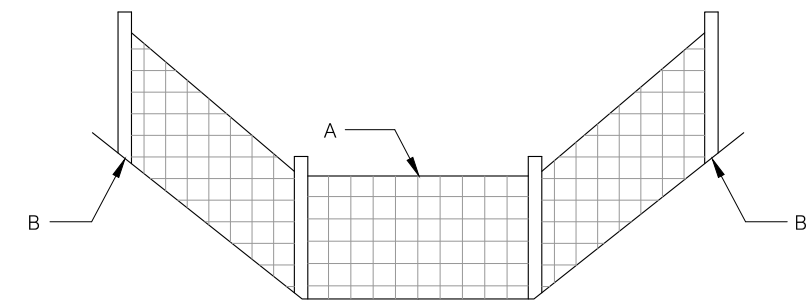
GEOTEXTILE SILT FENCE AND STRAW BALE SEDIMENT CONTROL BARRIER
NOT TO SCALE

- NOTES:
1. SEE GEOTEXTILE SILT FENCE AND STRAW BALE BARRIER DETAILS THIS SHEET.
 2. WHERE A DOUBLE ROW OF BARRIER IS CALLED FOR ON THE PLANS, INSTALL BARRIER ROWS 3 FEET APART.



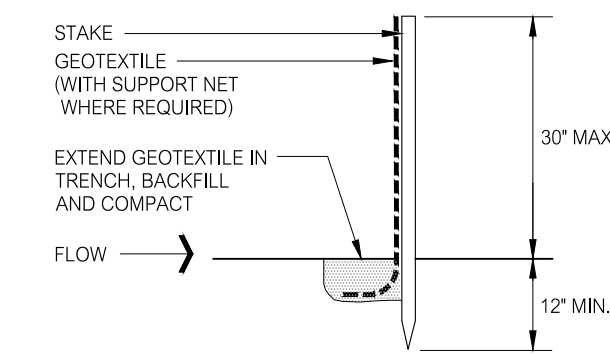
FENCE JOINT DETAIL

NOTE:
DRIVE STAPLES TIGHTLY TOGETHER AND SECURE TOPS OF STAPLES WITH CORD OR WIRE TO PREVENT FLOW-THROUGH OF SEDIMENT.

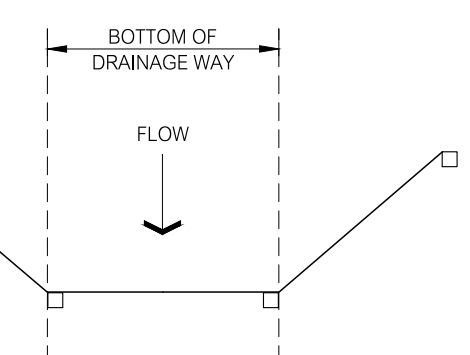


ELEVATION

NOTE:
WHEN NOT INSTALLED ON THE CONTOUR OR WHEN INSTALLED IN A DRAINAGE WAY, THE ELEVATION OF POINTS B SHALL BE HIGHER THAN POINT A.



SECTION

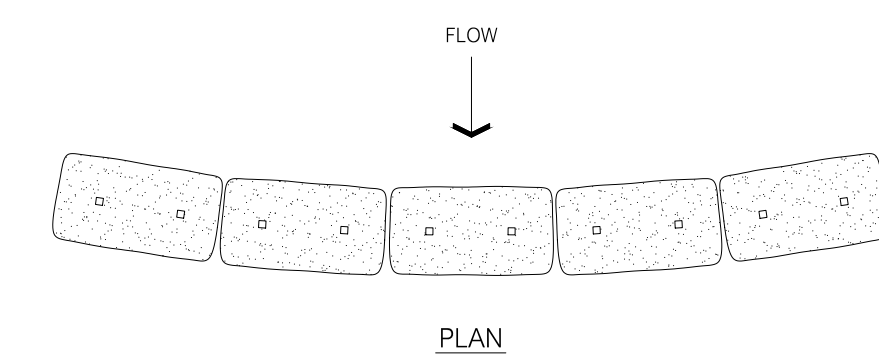


PLAN

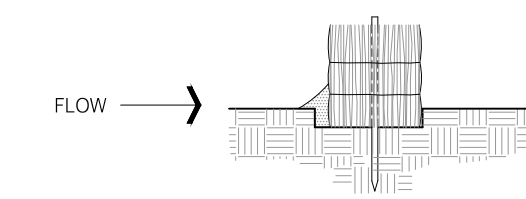
GSP GEOTEXTILE SILT FENCE
NOT TO SCALE

1. EXCAVATE 6\"/>

1. INSPECT FENCE AT LEAST ONCE PER WEEK AND WITHIN 24 HOURS OF THE END OF A STORM WITH A RAINFALL AMOUNT OF 1/2 INCH OR GREATER.
2. REMOVE ACCUMULATED SEDIMENT WHEN IT REACHES 1/2 THE HEIGHT OF THE FENCE.



PLAN



SECTION

HB STRAW BALE BARRIER
NOT TO SCALE

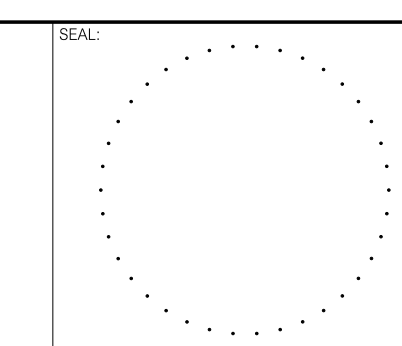
1. EXCAVATE 4\"/>

1. INSPECT BARRIER AT LEAST ONCE PER WEEK AND WITHIN 24 HOURS OF THE END OF A STORM WITH A RAINFALL AMOUNT OF 1/2 INCH OR GREATER.
2. REMOVE ACCUMULATED SEDIMENT WHEN IT REACHES 1/2 THE HEIGHT OF THE BARRIER.

NO.	DATE	DESCRIPTION
9-13-21		REVIEW COMMENTS
8-15-21		MISCELLANEOUS

REVISIONS	TITLE

LAND OF
GEORGE C. FIELD COMPANY, INC.
BOKUM ROAD
ESSEX, CONNECTICUT



PREPARED BY:
Summer Hill
Civil Engineers & Land Surveyors, P.C.
60 Wall Street
P.O. Box 708
Madison, Connecticut 06443-0708
Telephone: (203) 245-0722

DATE:	7-1-21	SHEET:	DETAILS	SHEET NO.:
SCALE:	AS NOTED			C3.6
DESIGNED:	MJO			
CHECKED:	LJM			
PROJECT:	BOKUM ROAD BUSINESS PARK BOKUM ROAD ESSEX, CONNECTICUT	PROJECT NO.:	20-50	