

MUNICIPAL SEPARATE STORM SEWER SYSTEM (MS4) STORMWATER POLLUTION PREVENTION PLAN

**TOWN OF ESSEX
29 WEST AVENUE
ESSEX, CT 06426-1167**



HISTORIC PERMIT # GSM 000019

PREPARED BY:



58H Connecticut Avenue
South Windsor, CT 06074-3476
Telephone (860) 282-1700
Facsimile (860) 282-1800

Table of Contents

INTRODUCTION	1
SMP STRUCTURE	1
AREA SUBJECT TO THE PLAN	1
SMP DEVELOPMENT	1
DESCRIPTION OF MUNICIPALITY	2
IMPAIRED WATERS	2
COASTAL CONSISTENCY / COASTAL MANAGEMENT ACT	3
ENDANGERED / THREATENED SPECIES ACT	3
AQUIFER PROTECTION AREA PROGRAM	4
(1) PUBLIC EDUCATION AND OUTREACH	4
1.1 IMPLEMENT PUBLIC EDUCATION PROGRAM	5
1.2 ADDRESS EDUCATION AND OUTREACH FOR POLLUTANTS OF CONCERN	5
(2) PUBLIC INVOLVEMENT AND PARTICIPATION	7
2.1 COMPLY WITH PUBLIC NOTICE REQUIREMENTS FOR THE STORMWATER MANAGEMENT PLAN AND ANNUAL REPORTS	7
(3) ILLICIT DISCHARGE DETECTION AND ELIMINATION	8
3.1 DEVELOP WRITTEN IDDE PLAN	8
3.2 DEVELOP LIST AND MAP OF ALL MS4 OUTFALLS AND INTERCONNECTIONS IN PRIORITY AREAS	8
3.3 DEVELOP CITIZEN REPORTING PROGRAM	9
3.4 ESTABLISH LEGAL AUTHORITY TO PROHIBIT ILLICIT DISCHARGES	9
3.5 DEVELOP RECORDKEEPING SYSTEM FOR IDDE TRACKING	9
3.6 ADDRESS IDDE IN AREAS WITH POLLUTANTS OF CONCERN	9
3.7 DETAILED MS4 INFRASTRUCTURE MAPPING	10
(4) CONSTRUCTION SITE STORMWATER RUNOFF CONTROL	11
4.1 IMPLEMENT, UPGRADE AND ENFORCE LAND USE REGULATIONS (OR OTHER LEGAL AUTHORITY) TO MEET REQUIREMENTS OF MS4 GENERAL PERMIT	11
4.2 DEVELOP AND IMPLEMENT PLAN FOR INTERDEPARTMENTAL COORDINATION OF SITE PLAN REVIEW AND APPROVAL	12
4.3 REVIEW SITE PLANS FOR STORMWATER QUALITY CONCERNS	12
4.4 CONDUCT SITE INSPECTIONS	12
4.5 IMPLEMENT PROCEDURE TO ALLOW PUBLIC COMMENT ON SITE DEVELOPMENT	12
4.6 IMPLEMENT PROCEDURE TO NOTIFY DEVELOPERS ABOUT DEEP CONSTRUCTION STORMWATER PERMIT	12
(5) POST-CONSTRUCTION STORMWATER MANAGEMENT IN NEW DEVELOPMENT OR REDEVELOPMENT	14
5.1 ESTABLISH OR UPHOLD LEGAL AUTHORITY AND GUIDELINES REGARDING LID AND RUNOFF REDUCTION IN SITE DEVELOPMENT PLANNING	14
5.2 IMPLEMENT LONG-TERM MAINTENANCE PLAN FOR STORMWATER BASINS AND TREATMENT STRUCTURES	15
5.3 DIRECTLY CONNECTED IMPERVIOUS AREA (DCIA) MAPPING	15
5.4 ADDRESS POST-CONSTRUCTION ISSUES IN AREAS WITH POLLUTANTS OF CONCERN	15
(6) POLLUTION PREVENTION / GOOD HOUSEKEEPING	16
6.1 DEVELOP AND IMPLEMENT FORMAL EMPLOYEE TRAINING PROGRAM	16
6.2 IMPLEMENT MS4 PROPERTY AND OPERATIONS MAINTENANCE	17
6.3 IMPLEMENT COORDINATION WITH INTERCONNECTED MS4s	18

6.4	DEVELOP AND IMPLEMENT A PROGRAM TO CONTROL OTHER SOURCES OF POLLUTANTS TO THE MS4	19
6.5	EVALUATE ADDITIONAL MEASURES FOR DISCHARGES TO IMPAIRED WATERS	19
6.6	TRACK PROJECTS THAT DISCONNECT DCIA	19
6.7	DEVELOP AND IMPLEMENT AN INFRASTRUCTURE REPAIR, REHABILITATION AND RETROFIT PROGRAM	19
6.8	DEVELOP AND IMPLEMENT PLAN TO IDENTIFY AND PRIORITIZE RETROFIT PROJECTS	20
6.9	DEVELOP AND IMPLEMENT STREET SWEEPING PROGRAM	20
6.10	DEVELOP AND IMPLEMENT CATCHBASIN CLEANING PROGRAM	20
6.11	DEVELOP AND IMPLEMENT SNOW MANAGEMENT PRACTICES	21
6.12	INTERCONNECTED MS4s	22
6.13	SOURCES CONTRIBUTING POLLUTANTS TO THE MS4	22
OUTFALL MONITORING		23
PLAN AMENDMENTS		24
	STORMWATER MANAGEMENT PLAN SIGNATURES	25
	STORMWATER MANAGEMENT PLAN ENGINEERING CERTIFICATION	26
FIGURE 1 SITE LOCATION MAP FOR ESSEX, CONNECTICUT		1
FIGURE 2 STATE ROUTES IN ESSEX, CONNECTICUT		2
FIGURE 3: COASTAL BOUNDARY ESSEX, CONNECTICUT		4
FIGURE 4: ENDANGERED / THREATENED SPECIES MAP (NATURAL DIVERSITY DATA BASE AREAS (NDDB))		5
FIGURE 5: AQUIFER PROTECTION AREAS		6
TABLES		
Table 1: Surface Water Quality Classifications, Essex, Connecticut		
Table 2: Essex Impaired Waterbody, Essex, Connecticut		
APPENDICES		
Appendix A	2017 MS4 General Permit for the Discharge of Stormwater from Small Municipal Separate Sewer Systems	
Appendix B	Illicit Discharge Detection and Elimination Plan	

Introduction

This Stormwater Management Plan (SMP) was developed by the Town of Essex to protect water quality and reduce the discharge of pollutants from the municipality's storm sewer system to the maximum extent practicable (MEP). This SMP addresses the requirements established by the CT Department of Energy and Environmental Protection's (DEEP) General Permit for the Discharge of Stormwater from Small Municipal Separate Storm Sewer Systems (MS4 General Permit). This permit is the local enforcement mechanism of the U.S. Environmental Protection Agency's (EPA) National Pollutant Discharge Elimination System (NPDES) Stormwater Phase II Rule.

SMP Structure

The plan outlines a program of best management practices (BMPs), measurable goals, responsible individuals or departments, and implementation schedules for the following six minimum control measures:

- (1) Public education and outreach
- (2) Public involvement and participation
- (3) Illicit discharge detection and elimination
- (4) Construction site stormwater runoff control
- (5) Post-construction stormwater management in new development and redevelopment
- (6) Pollution prevention/good housekeeping

Appendices to this plan include the CT DEEP General Permit for the Discharge of Stormwater from Small MS4s and a map of Essex's impaired waterbodies.

Area Subject to the Plan

The measures identified in this SMP will be applied throughout the boundaries of the Town of Essex except as otherwise noted and be consistent with the MS4 General Permit requirements. Stormwater discharge from municipally-owned maintenance garages, salt sheds and other facilities subject to the DEEP Industrial Stormwater General Permit will continue to be regulated under the conditions of that permit.

SMP Development

A stormwater committee led by the Essex Health Department and including representatives from the Selectman's Office, Public Works, Town Engineer, Zoning Enforcement, Inland Wetlands and Watercourses Commission, Assessor, App Geo, and Apex Companies, LLC, was assembled to coordinate the development and implementation of the SMP.

The SMP's implementation will be tracked and documented in Annual Reports summarizing stormwater management activities carried out by the town and its partners. These reports will be submitted to DEEP on an annual basis no later than April 1.

Description of Municipality

The operator of the MS4 is the Town of Essex. The Town of Essex is a public entity located in the county of Middlesex, State of Connecticut. The Town of Essex covers an area of approximately 10 square miles, located in south-central Connecticut as shown in Figure 1.

The Connecticut Department of Transportation (DOT) operates an MS4 on state highways located in the Town of Essex. This system is regulated under the CT DOT's MS4 permit. CT DOT maintains several state routes that run through Essex: Route 9, Route 153, Route 154, Route 602 and Route 604 as shown in Figure 2. Implementation of the BMPs identified in this plan will be coordinated between Essex and CT DOT.

Impaired Waters

In preparing the SMP, the CT DEEP's Water Quality Standards were reviewed in order to determine the Surface Water Quality Classifications for each watercourse in town. Certain BMP's address the watersheds containing watercourses designated as "impaired" by the CT DEEP. **Table 1** shows the water quality classification for each watershed. **Table 2** summarizes the water bodies within or that run through the municipality that are listed on the 2014 List of Connecticut Water Bodies not meeting water quality standards and are designated as "impaired". Data obtained from <http://ctecoapp1.uconn.edu/advancedviewer/>.

TABLE 1 Surface Water Quality Classifications Essex, Connecticut			
Drainage Basin Number	Name	Surface Water Quality Classification	Impaired per Water Quality Standards
CT-E1-029-SB	LIS EB Inner Estuary – Connecticut River (lower), Essex	Coastal & Marine Surface Waters - Class SB	Yes (Bacteria & PCBs)

TABLE 2 Essex Impaired Waterbody Essex, Connecticut					
Waterbody ID	Water Segment Description	Water Segment Length (miles)	Impaired Use	Pollutant	Cause/Potential Source
LIS EB Inner Estuary – Connecticut River (lower) – Surface Water Quality Classification – SB					
Connecticut River, Estuary	Eastern portion of Long Island Sound, Inner Estuary, Connecticut River from I-95 crossing US to area just above Brockaway Island, Essex	3.18	Human Consumption of Aquatic Life	Polychlorinated biphenyls (PCBs)	Urban Runoff / Stormwater runoff, illicit discharge, permit source

The surface water classifications currently assigned to Essex watercourses are defined below.

Coastal and Marine Surface Water - Class SB:

Designated uses: marine fish, shellfish and wildlife habitat, shellfish harvesting for transfer to approved areas for purification prior to human consumption, recreation, industrial and other legitimate uses including navigation.

Discharges restricted to: discharges from public or private drinking water treatment systems, dredging, dewatering, emergency and clean water discharges, cooling waters, discharges from industrial and municipal wastewater treatment facilities (providing Best Available Treatment and Best Management Practices are applied), and other discharges subject to the provisions of section 22a-430 CGS.

Based on the DEEP Surface Water Quality Classifications, the Connecticut River Inner Estuary is identified as the surface water that should take the highest priority in Essex's efforts to address stormwater impacts. This was taken into consideration as the BMPs were developed.

Coastal Consistency / Coastal Management Act

The Town of Essex borders the Connecticut River to the east and portions of the river have been designated as a coastal resource (Figure 3).

Any actions conducted by the Town of Essex will be consistent with the policies of the Connecticut Coastal Management Act (CCMA), Section 22a-92 of the Connecticut General Statutes, and any stormwater discharges will not cause adverse impacts to coastal resources as defined in Section 22a-93(15) of the Connecticut General Statutes.

If the Town of Essex wishes to initiate, create, or originate a discharge of stormwater below the coastal jurisdiction line into coastal, tidal, or navigable waters for which a permit is required under the Structures and Dredging Act in accordance with Section 22a-361(a) of the Connecticut General Statutes or into tidal wetlands for which a permit is required under the Tidal Wetlands Act in accordance with Section 22a-32 of the Connecticut General Statutes, the municipality will obtain such permit(s) from the Commissioner prior to initiating, creating or originating such discharge. The Town of Essex will address all applicable goals and policies in the CCMA.

The permittee's Stormwater Management Plan will not threaten the continued existence of any species listed pursuant to section 26-306 of the Connecticut General Statutes as endangered or threatened and will not result in the destruction or adverse modification of habitat designated as essential to such species.

Endangered / Threatened Species Act

Three areas within the Town of Essex have been identified as habitats for endangered or threatened species (Figure 4). "Endangered Species" means any native species documented by biological research and inventory to be in danger of extirpation throughout all or a significant portion of its range within the state and to have no more than five occurrences in the state, and any species determined to be an "endangered species" pursuant to the federal Endangered Species Act. "Threatened Species" means any native species documented by biological research and inventory to be likely to become an endangered species within the foreseeable future throughout all or a significant portion of its range within the state and to have no more than nine occurrences in the state, and any species determined to be a "threatened species" pursuant to the federal Endangered Species Act, except for such species determined to be endangered by the Commissioner in accordance with Section 4.0 of this act.

The Town of Essex has requested information related to the type of endangered / threaten species known to exist in their Town. The Essex Stormwater Management Plan states that no stormwater discharge will be initiated,

created, or originated that will threaten the continued existence of any species listed pursuant to Section 26-306 of the Connecticut General Statutes as endangered or threatened and will not result in the destruction or adverse modification of habitat designated as essential to such species.

Aquifer Protection Area Program

The Town of Essex has areas designated as Aquifer Protection Areas by CT DEEP (Figure 5). These aquifer protection areas (sometimes referred to as “wellhead protection areas”) are areas around major public water supply wells. To ensure a plentiful supply of public drinking water for present and future generations, these areas are protected by restricting development of certain new land use activities that use, store, handle or dispose of hazardous materials and requires existing regulated land uses to register and follow best management practices.

The Town of Essex is responsible for appointing an aquifer protection agency, inventorying land uses within the aquifer protection area, designating the aquifer protection area boundary, and adopting and implementing local land use regulations. The agency regulates land use activities within the aquifer protection area by:

- registering existing regulated activities
- issuing permits for new regulated activities
- overseeing regulated facilities
- educating their citizens on ground water protection.

The Essex Stormwater Management Plan states that no stormwater discharge will be initiated, created, or originated that will threaten an aquifer protection area pursuant to Section 22a-354a-bb of the Connecticut General Statutes.

(1) Public Education and Outreach

This minimum control measure outlines a program to communicate common sources of stormwater pollution and the impacts of polluted stormwater to the public. This will be done through distributing educational materials to the community and conducting outreach activities. The following BMPs and implementation schedule serve as Essex’s MS4 Public Education Program.

Goals:

- Raise public awareness that polluted stormwater runoff is the most significant source of water quality problems;
- Motivate residents to use Best Management Practices (BMPs) that reduce polluted stormwater runoff; and
- Reduce polluted stormwater runoff in town as a result of increased awareness and utilization of BMPs.

1.1 Implement Public Education Program

Essex will collect and distribute stormwater educational materials that, at a minimum, address the impacts of the following on water quality: pet waste, impervious cover, application of fertilizers, pesticides, and herbicides, and illicit discharges and improper disposal of wastes into the MS4.

Essex will maintain their own or link to UConn NEMO's comprehensive online library of stormwater educational material. The Essex Health Department's website (<http://www.essexct.gov/health-department>) will link directly to this web-based library and promote the availability of these materials. Essex will also provide materials in a printed format to be on display in public locations within Essex Town Hall and its public libraries.

Additional targeted outreach efforts will be completed by the Essex Health Department to educate residents and business owners on particular aspects of stormwater management.

Essex will coordinate with the Land Use Department and Inland Wetland & Watercourses commission to ensure that all required topics listed in this plan are covered and tracked on an annual basis.

1.2 Address Education and Outreach for Pollutants of Concern

Essex will distribute information on common sources of phosphorus, nitrogen and bacteria pollution and how to prevent or reduce the amount reaching the MS4 and discharging into waterways. Although these pollutants are NOT listed as impairments in Essex's watercourses, presence of these contaminants can quickly and significantly decrease water quality.

The table below shows additional topics to be covered to address phosphorus, nitrogen, and bacteria

Phosphorus	Nitrogen	Bacteria
Septic systems	Septic systems	Septic systems
Fertilizer use	Fertilizer use	Sanitary cross connections
Grass clippings and leaves management	Grass clippings and leaves management	Waterfowl
Detergent use	Discharge of sediment (to which Nitrogen binds) from Construction sites	Pet waste
Discharge of sediment (to which Phosphorus binds) from construction sites	Other erosive surfaces	Manure piles associated with livestock and horses
Other erosive surfaces		

Public Outreach and Education Schedule

BMP	Lead Department / Individual	Month / Year of Implementation	Measurable Goal
Implement a public education program to raise awareness about pollution from stormwater runoff and its damaging impact on water quality.	Land Use Office/Lisa Fasulo & Joseph Budrow Conservation Commission	July 1, 2018 and continue until permit expires	Distribute printed & electronic information and promote web based educational resources (Essex Events article, electronic newsletter or Valley Courier)
Develop an education program for specific pollutants of concern	Land Use Office/Lisa Fasulo & Joseph Budrow	July 1, 2018 and continue until permit expires	Distribute information regarding the pollutants Phosphorous, Nitrogen, and Bacteria.
Develop a Car Wash Guidance Document	Public Works/David Caroline & Ryan Welch	July 1, 2018 and continue until permit expires	Distribution
Create a set of Stormwater Outreach Tools on the Town website	Town Webmaster	July 1, 2018 and continue until permit expires	Create & promote website links
Septic System Evaluation & Education	Health Dept/Lisa Fasulo	July 1, 2018 and continue until permit expires	Monthly postcards reminders for septic tank pumpouts; Submit a article in Essex Events Magazine regarding the Wastewater Management Ordinance.
Clean Marina Program	Harbor Commission	July 1, 2018 and continue until permit expires	Finalize program
Update Zoning, Inland Wetland and Subdivision Regulations	Zoning Office/Joseph Budrow	July 1, 2018 and continue until permit expires	Finalize & Distribute
Lawn / Landscape and Garden Guidance Documents (N and P Issues)	Public Works/David Caroline & Ryan Welch Health Depart/Lisa Fasulo	July 1, 2018 and continue until permit expires	Finalize Program
Pet Waste Collection	Public Works/David Caroline & Ryan Welch Health Depart/Lisa Fasulo	July 1, 2018 and continue until permit expires	Finalize & Distribute

Storm Drain Regulations	Stencilling	Public Works/David Caroline & Ryan Welch	July 1, 2018 and continue until permit expires	Finalize & Distribute
-------------------------	-------------	------------------------------------------	------------------------------------------------	-----------------------

(2) Public Involvement and Participation

This minimum control measure identifies the process for public involvement and participation in the town's stormwater management efforts.

Goals:

- Involve the community in planning and implementing the town's stormwater management activities.
- Provide a minimum 30 day notice to the public for this plan and annual reports.

2.1 Comply with Public Notice Requirements for the Stormwater Management Plan and Annual Reports

Essex will publish a public notice on its website (<http://www.essexct.gov>). The notice will provide a contact name, phone number, address, and email to whom the public can send comments. Additionally, this plan and the Annual Reports will be publicly accessible on the website (<http://www.essexct.gov>) and in Essex Town Hall. The public notice will allow for a 30-day comment period, at a minimum.

Public Involvement and Participation Schedule

BMP	Lead Department / Individual	Month / Year of Implementation	Measurable Goal
Comply with public notice requirements for the SMP and Annual Reports	Selectman's Office/ Maria Lucarelli	July 1, 2017 and continue until permit expires	Publish the public notices in the Hartford Courant, Valley Courier or other local newspaper and on the Town of Essex website. Make a print copy of all reports available in the Selectmans Office at the Essex Town Hall.
Identify and incorporate Qualifying Local Programs – Regional Planning AgenciesTown	Selectman's Office/ Maria Lucarelli	Distribute printed and electronic information and promote web-based educational resources	July 1, 2017 and continue until permit expiration.

Commissions and Local Civic Organizations		(Essex Event articles, electronic newsletter, or Valley Courier	
		Schedule civic activities related to stormwater management goals.	
Comply with State & Local FOIA Requests.	Selectman's Office/ Maria Lucarelli.	Comply with State and Local FOIA Requests.	July 1, 2017 and continue until permit expiration.

(3) Illicit Discharge Detection and Elimination

This minimum control measure outlines a program to detect and eliminate current illicit discharges to the MS4 and prevent further illicit discharges in the future. All activities for this measure will be completed in Essex's priority areas (urbanized area, catchment areas with directly connected impervious area (DCIA) > 11%, and outfalls that discharge to impaired waters).

Goal:

Find the source of any illicit discharges; eliminate those illicit discharges; and ensure ongoing screening and tracking to prevent and eliminate future illicit discharges.

3.1 Develop Written IDDE Plan

Essex will develop a written IDDE plan to detect, locate and eliminate illicit discharges (to the maximum extent practicable) from the MS4 within Essex's priority areas. The IDDE plan will provide enforceable legal authority to eliminate illicit discharges, assign responsibilities, and develop a citizen reporting program. The plan will also outline the outfall screening and IDDE protocols consistent with Appendix B of the MS4 General Permit to identify, prioritize, and investigate MS4 catchments for suspected illicit discharge of pollutants. Also, the IDDE plan will outline follow-up screening and illicit discharge prevention procedures (Appendix B).

3.2 Develop List and Map of all MS4 Outfalls and Interconnections in Priority Areas

Essex will develop a database of all stormwater discharges from a pipe or conduit located within and owned or operated by the municipality and all interconnections with other MS4s. Each entry will include:

- Type, material, size, shape and location (identified with a latitude and longitude) of conveyance, outfall or channelized flow (e.g. 24" concrete pipe);
- the name, water body ID and Surface Water Quality Classification of the immediate surface waterbody or wetland to which the stormwater runoff discharges;
- if the outfall does not discharge directly to a named waterbody, the name and water body ID of the nearest named waterbody to which the outfall eventually discharges;

- d. the name of the watershed, including the subregional drainage basin number (available from CT ECO at www.cteco.uconn.edu) in which the discharge is located;
- e. date of most recent inspection of the outfall, the condition, and any indicators of potential non-stormwater discharges as of most recent inspection;

The database will be exported into excel format for annual reports.

The database of all stormwater discharges from a pipe or conduit located within and owned or operated by the municipality and all interconnections with other MS4s will be updated using an AppGEO software program that will include those items listed above (3.2a-3.2e).

3.3 Develop Citizen Reporting Program

Essex will establish a system to allow for citizen reporting of suspected illicit discharges into the stormwater system. The system will include an email address and phone number for submitting a report. Essex will affirmatively investigate and eliminate any illicit discharges for which a time and location of discharge are provided. Essex will promptly inspect the reported outfall or manhole and proceed according to the requirements of the written IDDE program. All citizen reports and responses will be included in Essex's annual report.

3.4 Establish Legal Authority to Prohibit Illicit Discharges

Essex will update or uphold the necessary and enforceable legal authority by statute, ordinance, rules and regulations, permit, easement, contract, order or any other means, to eliminate illicit discharges. The authority will:

- a. prohibit illicit discharges to its storm sewer system and require removal of such discharges consistent with the deadlines outlined in the MS4 general; and
- b. authorize the investigation of suspected illicit discharges and elimination of illicit discharge, including from properties not owned or controlled by the MS4 that discharge to the MS4
- c. control the discharge of spills and prohibit the dumping or disposal of materials including, but not limited to, residential, industrial and commercial wastes, trash, used motor vehicle fluids, pesticides, fertilizers, food preparation waste, leaf litter, grass clippings, and animal wastes into its MS4; and
- d. authorize appropriate enforcement procedures and actions;
- e. authorize fines or penalties and/or recoup costs incurred by the permittee from anyone creating an illicit discharge or spilling or dumping.

3.5 Develop Recordkeeping System for IDDE Tracking

Essex will keep a record of illicit discharge abatement activities including location (including latitude and longitude or address), description, date(s) of inspection, sampling data (if applicable), action(s) taken, date of removal or repair and responsible party.

3.6 Address IDDE in Areas with Pollutants of Concern

Essex will identify which areas in town are most likely to contribute nitrogen, phosphorus, and bacteria to the MS4. This assessment will consider: historic on-site sanitary system failures, proximity to bacterial impaired waters, low infiltrative soils, and shallow groundwater. Any areas determined to have a high potential for septic system failure will be reported to the Essex Health Department for corrective action.

3.7 Detailed MS4 Infrastructure Mapping

Essex will revise a detailed map of the MS4 to include:

- Components of the MS4 within priority areas:
 - Outfalls & receiving waters;
 - Pipes; open channel conveyances; catch basins; manholes;
 - Interconnections with other MS4s and other storm sewer systems;
 - Municipally-owned stormwater treatment structures (e.g. detention & retention ponds, infiltration systems, bioretention areas, water quality swales, gross particle separators, oil/water separators, or other systems);
 - Catchment delineations for each outfall;
 - Impaired water bodies identified by name and use impairment as defined by the most recent integrated water quality report;

Essex will update the map as new information becomes available and will report on the progress of the development of this map in the annual report.

Illicit Discharge Detection and Elimination Schedule

BMP	Lead Department / Individual	Month / Year of Implementation	Measurable Goal
Develop written IDDE program	Public Works/Dave Caroline & Ryan Welch Town Engineer/Bob Doane Contracted Consultant/ AppGeo	July 1, 2018	Finalize program
Develop list and maps of all MS4 stormwater outfalls in priority areas	Public Works/Dave Caroline & Ryan Welch Town Engineer/Bob Doane Contracted Consultant/ AppGeo	July 1, 2019	Finalize list & maps
Develop citizen reporting program	Selectman's Office/Maria Lucarelli	July 1, 2018	Establish a reporting tool
Establish legal authority to prohibit illicit discharges	Selectman's Office/Board of Selectmen	July 1, 2018	Completion
Develop record keeping system for IDDE tracking	Selectman's Office/Betsy D'Amico	July 1, 2017	On-going
Address IDDE in areas with pollutants of concern	Public Works/Dave Caroline & Ryan Welch Town Engineer/Bob Doane Contracted Consultant/ AppGeo	July 1, 2017	On-going
Detailed MS4	Public Works/Dave Caroline &	July 1, 2020	On-going

Infrastructure Mapping	Ryan Welch Town Engineer/Bob Doane Contracted Consultant/ AppGeo		
Complete list and maps of all MS4 stormwater outfalls throughout municipality	Public Works/Dave Caroline & Ryan Welch Town Engineer/Bob Doane Contracted Consultant/ AppGeo	July 1, 2020	On-going
Septic System Inspection & Maintenance Program	Health Dept/Lisa Fasulo		On-going

(4) Construction Site Stormwater Runoff Control

This minimum control measure outlines procedures for minimizing polluted stormwater runoff from activities that disturb one or more acres of land. In Essex, this is determined on a site by site basis.

Goal:

Minimize polluted stormwater runoff from construction sites and prevent it from carrying sediment into waterways via MS4 infrastructure.

4.1 Implement, Upgrade and Enforce Land Use Regulations (or Other Legal Authority) to Meet Requirements of MS4 General Permit

Essex will revise its land use regulations to establish the legal authority to control stormwater runoff from construction sites by requiring:

- developers, construction site operators, or contractors maintain consistency with the 2002 Guidelines for Soil Erosion and Sedimentation Control, as amended, the Connecticut Stormwater Quality Manual, and all stormwater discharge permits issued by the DEEP within the municipal or institutional boundary pursuant to CGS 22a-430 and 22a-430b;
- the implementation of additional measures to protect/improve water quality (in addition to the above requirements) as deemed necessary by Essex;
- Essex is authorized to carry out all inspection, surveillance and monitoring procedures necessary to determine compliance with municipal regulations, ordinances or programs or institutional requirements related to the management of Essex's MS4. Inspections shall be conducted, where allowed, to inventory the number of privately-owned retention ponds, detention ponds and other stormwater basins that discharge to or receive drainage from the permittee's MS4;
- the owner of a site seeking development approval from Essex shall provide and comply with a long term maintenance plan and schedule to ensure the performance and pollutant removal efficiency of privately-owned retention ponds, detention ponds and other stormwater basins that discharge to or receive discharge from Essex's MS4 including short-term and long-term inspection and maintenance measures to be implemented by the private owner; and
- Essex will control, through interagency or inter-jurisdictional agreements, the contribution of pollutants between the permittee's MS4 and MS4s owned or operated by others.

4.2 Develop and Implement Plan for Interdepartmental Coordination of Site Plan Review and Approval

Essex's plan to coordinate the functions of all the departments and boards involved in the review, permitting, or approval of land disturbance projects is as follows:

4.3 Review Site Plans for Stormwater Quality Concerns

Essex will conduct site plan reviews that incorporate consideration of stormwater controls or management practices to prevent or minimize impacts to water quality on sites with soil disturbance of one acre or more. Essex will also conduct site inspections to assess the adequacy of the installation, maintenance, operation, and repair of construction and post construction control measures and take enforcement action when necessary.

4.4 Conduct Site Inspections

Essex will perform construction site inspections and take enforcement actions if necessary to ensure the adequacy of the installation, maintenance, operation, and repair of all construction and post-construction runoff control measures.

4.5 Implement Procedure to Allow Public Comment on Site Development

Essex's procedure for public involvement in proposed and ongoing development and land disturbance activities is as follows:

All site plans for proposed development and land disturbance are available in the Land Use Office for public review and comment. Any concerns shared with staff are relayed to the appropriate departments.

Should any proposed land disturbance activities go before the Zoning Commission or Inland Wetlands and Watercourses Commission there will be opportunity for the public to comment or ask questions if a public hearing is held. If no public hearing is held, then the Enforcement Agent is available to the public during Town Hall business hours.

If a zoning permit is required for any proposed development that may include land disturbance activities, then immediate abutters of the property where the activity is taking place will be notified. Concerns may be addressed by contacting the Enforcement Agent during Town Hall business hours.

4.6 Implement Procedure to Notify Developers About DEEP Construction Stormwater Permit

Essex will notify developers and contractors of their potential obligation to obtain authorization under DEEP's General Permit for the Discharge of Stormwater and Dewatering Wastewaters Associated with Construction Activities (construction general permit) if their project disturbs more than 1 acre of land and results in a point source discharge to Connecticut surface waters directly or through the Essex MS4. Essex will also require a copy of

the Storm Water Pollution Control Plan be made available to the town on request. The procedure to notify developers of the construction general permit is as follows:

It is a priority for the ESSEX Land Use OFFICE staff to schedule pre-activity meetings with developers. When assessing if a proposed activity will incur the need for a Storm Water Pollution Control Plan, the staff will alert the developer that they SHALL pursue the approval of a general permit from DEEP.

If there isn't a pre-activity meeting with Essex Land Use Office staff, then a proposal of such magnitude will most assuredly be heard by the Essex Inland Wetlands and Watercourses Commission and the Zoning Commission at a public hearing. At these hearings the call for a general permit will be issued to the developer as part of the review and recommendation by the Town Engineer.

The Town of Essex officials will inform developers (working with the municipality) that they have a potential obligation to obtain authorization under the DEEP's General Permit for the Discharge of Stormwater and Dewatering Wastewaters Associated with Construction Activities ("construction general permit") if their development or redevelopment project disturbs one or more acres of land, either individually or collectively, as part of a larger common plan, and results in a point source discharge to the surface waters of the state directly or through the permittee's MS4. The notification shall include a provision informing the developer/ contractor of their obligation to provide a copy of the Storm Water Pollution Control Plan (required by the construction general permit) to the permittee upon request.

The contractor is required at all times to conduct his operations in conformity with all Federal and State permit requirements concerning water, air, noise pollution and the disposal of contaminated, or hazardous materials.

Construction Site Stormwater Management Schedule

BMP	Lead Department / Individual	Month / Year of Implementation	Measurable Goal
Implement, upgrade and enforce land use regs or other legal authority to meet MS4 permit requirements	Land Use Office Joseph Budrow	On-going	July 1, 2019
	Health Dept/Lisa Fasulo		
Develop/implement plan for interdepartmental coordination in site plan review and approval	Land Use Office Joseph Budrow	On-going	July 1, 2017
	Health Dept/Lisa Fasulo		
	Selectman's Office/Maria Lucarelli		
Review site plans for stormwater quality concerns	Land Use Office/Joseph Budrow	On-going	July 1, 2017
	Town Engineer/ Robert Doane		
Conduct site inspections	Land Use Office/Joseph Budrow	On-going	July 1, 2017

Implement procedure to allow public comment on site development	Zoning Office/Joseph Budrow	On-going	July 1, 2017
Implement procedure to notify developers about DEEP construction stormwater permit	Zoning Office/Joseph Budrow	On-going	July 1, 2017

(5) Post-construction Stormwater Management in New Development or Redevelopment

This minimum control measure outlines Essex's program to address stormwater runoff from new or re-development projects that disturb one or more acres of land.

Goal:

Mitigate the long-term impacts of new and re-development projects on water quality through proper use of low impact development and runoff reduction practices.

5.1 Establish or Uphold Legal Authority and Guidelines Regarding LID and Runoff Reduction in Site Development Planning

Essex will establish or uphold existing the legal authority by ordinance, bylaw, regulation, standard condition of approval, or other means to require, to the MEP, developers and contractors seeking the town's approval to consider the use of low impact development (LID) and runoff reduction site planning and development practices that meet or exceed those LID and runoff reduction practices in the CT Stormwater Quality Manual prior to other stormwater management practices allowed in Essex's land use regulations, guidance or construction project requirements.

This legal authority will include the following standards:

1. for redevelopment of sites that are currently developed with Directly Connected Impervious Area (DCIA) of forty percent or more, the project must retain on-site half the water quality volume for the site, or
2. for new development and redevelopment of sites with less than forty percent DCIA, retain the water quality volume for the site, or
3. if those retention standards cannot be met, the developer will be required to provide a report indicating why the standard could not be met and a mitigation project on another property or pay a fee to fund a DCIA retrofit.

In developing this legal authority, Essex will consider the following watershed protection elements to manage the impacts of stormwater on receiving waters:

- a. Minimize the amount of impervious surfaces (roads, parking lots, roofs, etc.) within each municipality by minimizing the creation, extension, and widening of parking lots, roads, and associated development and encourage the use of Low Impact Development or green infrastructure practices.
- b. Preserve, protect, create and restore ecologically sensitive areas that provide water quality benefits and serve critical watershed functions. These areas may include, but are not limited to; riparian corridors, headwaters, floodplains and wetlands.

- c. Implement stormwater management practices that prevent or reduce thermal impacts to streams, including requiring vegetated buffers along waterways, and disconnecting discharges to surface waters from impervious surfaces such as parking lots.
- d. Seek to avoid or prevent hydromodification of streams and other water bodies caused by development, including roads, highways, and bridges.
- e. Implement standards to protect trees, and other vegetation with important evapotranspirative qualities.
- f. Implement policies to protect native soils, prevent topsoil stripping, and prevent compaction of soils.
- g. Coordinate with state or local health officials to ensure no interference with performance of on-site septic systems.
- h. Limit turf areas.

In addition, Essex will review its current regulations - site planning requirements, zoning regulations, street design regulations, and infrastructure specifications with minimum size criteria for impervious cover (roads, parking lots, etc.) to identify and, where appropriate, reduce or eliminate existing regulatory barriers to implementation of LID and runoff reduction practices to the MEP.

5.2 Implement Long-term Maintenance Plan for Stormwater Basins and Treatment Structures

Essex will develop a maintenance plan for retention / detention ponds and stormwater treatment structures that it owns or over which it holds an easement or other authority and that are located in the town's priority areas to ensure their long-term effectiveness. This plan will require an annual inspection of those retention / detention ponds and stormwater treatment structures and removal of accumulated sediment and pollutants in excess of 50% design capacity.

5.3 Directly Connected Impervious Area (DCIA) Mapping

Essex will follow guidance provided by DEEP and UConn CLEAR to calculate the Directly Connected Impervious Area (DCIA) that contributes stormwater runoff to each of its MS4 outfalls. Progress on this task will be documented in each Annual Report until completion.

5.4 Address Post-construction Issues in Areas with Pollutants of Concern

For areas contributing to waters where **Nitrogen, Phosphorus** or **Bacteria** is a Stormwater Pollutant of Concern and erosion or sedimentation problems are found during the annual inspections conducted under the long-term maintenance plan described in BMP 5.2, Essex will prioritize those areas for the DCIA retrofit program under Minimum Control Measure 6 – Pollution Prevention/Good Housekeeping.

Post-Construction Stormwater Management Schedule

BMP	Lead Department / Individual	Month / Year of Implementation	Measurable Goal
Establish or update legal authority and guidelines regarding LID and runoff reduction in site development planning	Land Use Office/Joseph Budrow & John Guzkowski	Completion	July 1, 2021

Enforce LID/runoff reduction requirements for development and redevelopment projects	Public Works/David Caroline & Ryan Welch Land Use Office/Joseph Budrow Town Engineer/Bob Doane	On-going	July 1, 2021
Implement long-term maintenance plan for stormwater basins and treatment structures	Public Works/David Caroline & Ryan Welch Town Engineer/Bob Doane	On-going (Annual / Semi-Annual)	July 1, 2019
Complete DCIA mapping	Public Works/David Caroline & Ryan Welch Town Engineer/Bob Doane Contracted Consultant/ AppGeo	Completion	July 1, 2020
Address post-construction issues in areas with pollutants of concern	Land Use Office/Joseph Budrow Town Engineer/Bob Doane	Completion	July 1, 2019

(6) Pollution Prevention / Good Housekeeping

This minimum control measure outlines a program to mitigate the impact of town operations and maintenance on town owned and/or operated properties and the MS4 itself to water quality.

Goal:

Prevent or reduce pollutant runoff as a result of municipal operations.

Essex will implement an operations and maintenance program to prevent or reduce pollutant runoff from town facilities and protect water quality.

6.1 Develop and Implement Formal Employee Training Program

Essex will continue its MS4 training program for town employees to increase awareness of water quality issues. Training will include:

- Standard operating procedures consistent with the MS4 general permit;
- General goals and objectives of this Stormwater Management Plan;
- Identification and reporting of illicit discharges and improper disposal; and
- Spill response protocols and responsibilities.

These trainings may also include regional or statewide trainings coordinated by UConn CLEAR or others.

6.2 Implement MS4 Property and Operations Maintenance

Essex-owned or -operated properties, parks, and other facilities that are owned, operated, or otherwise the legal responsibility of Essex will be maintained so as to minimize the discharge of pollutants to its MS4. Such maintenance will include, but not be limited to:

(i) Parks and Open Space

Essex will optimize the application of fertilizers by municipal employees, institutional staff, or private contractors on lands and easements for which it is responsible for maintenance. Optimization practices considered may include:

- conducting soil testing and analysis to determine soil phosphorus levels,
- the reduction or elimination of fertilizers,
- reduction of fertilizer usage by adhering to the manufacturers' instructions,
- use of alternative fertilizers forms (i.e. products with reduced, slow-releasing, or insoluble phosphorus compositions),
- proper storage and application practices (i.e. avoid impervious surfaces),
- application schedule (i.e. appropriate season or month) and timing (i.e. coordinated with climatic conditions to minimize runoff potential);
- standard operating practices for the handling, storage, application, and disposal of pesticides and herbicides in compliance with applicable state and federal laws;
- evaluating reduced mowing frequencies and use of alternative landscaping materials like drought resistant and native plantings;
- establish procedures for management of trash containers at parks (scheduled cleanings; sufficient number).

Essex will establish practices for the proper disposal of grass clippings and leaves at Essex-owned lands. Clippings shall be composted or otherwise appropriately disposed. Clippings will not enter the MS4 system or waters of the state.

(ii) Pet Waste Management

Essex will identify locations where inappropriate pet waste management practices are immediately apparent and pose a threat to receiving water quality due to proximity and potential for direct conveyance of waste to its storm system and waters. In such areas, Essex will, implement targeted management efforts such as public education and enforcement (e.g. increased patrol for violators).

In Essex-owned recreational areas where dog walking is allowed, Essex will install educational signage, pet waste baggies, and disposal receptacles (or require carry-out).

Essex will document its efforts in its annual reports. Essex should consider including information regarding the scope and extent of its education, compliance, and enforcement efforts (including the number of violations pursued and fines levied or other enforcement taken).

(iii) Waterfowl Management

Essex will identify lands where waterfowl congregate and feeding by the public occurs.

To raise awareness regarding the water quality impacts, Essex will install signage or use other targeted techniques to educate the public about the detrimental impacts of feeding waterfowl (including the resulting feces deposition) and discourage such feeding practices.

Essex will also implement practices that discourage the undesirable congregation of waterfowl in these areas, or otherwise isolate the direct drainage from these areas away from its storm system and waters.

(iv) **Essex Buildings and Facilities (Schools under the Jurisdiction of Essex, Town Offices, Police and Fire Stations, Pools, Parking Garages and other Essex-owned or Operated Buildings or Utilities)**

Essex will:

- evaluate the use, storage, and disposal of both petroleum and non-petroleum products and ensure, through employee training, that those responsible for handling these products know proper procedures;
- ensure that Spill Prevention Plans are in place, if applicable, and coordinate with the fire department as necessary;
- develop management procedures for dumpsters and other waste management equipment;
- sweep parking lots and keep areas surrounding the facilities clean to minimize runoff of pollutants;
- ensure that all interior building floor drains are not connected to the MS4 and are appropriately permitted.

(v) **Vehicles and Equipment**

Essex will

- establish procedures for the storage of Essex-owned or -operated vehicles;
- require vehicles with fluid leaks to be stored indoors or in contained areas until repaired;
- evaluate fueling areas owned by Essex and used by Essex owned or -operated vehicles and if possible, place fueling areas under cover in order to minimize exposure;
- establish procedures to ensure that vehicle wash waters are not discharged to the municipal storm sewer system or to surface waters;
- ensure any interior floor drains are appropriately permitted.

(vi) **Leaf Management**

Essex will establish and implement procedures to minimize or prevent the deposition of leaves in catch basins, streets, parking lots, driveways, sidewalks or other paved surfaces that discharge to the MS4. Such procedures shall also apply to leaves collected by Essex.

6.3 Implement Coordination with Interconnected MS4s

Essex will coordinate with operators of interconnected MS4s (such as neighboring municipalities, institutions and DOT) regarding the contribution of potential pollutants from the storm sewer systems, contributing land use areas and stormwater control measures in the respective MS4s. This same coordination shall be conducted regarding operation and maintenance procedures utilized in the respective systems.

6.4 Develop and Implement a Program to Control Other Sources of Pollutants to the MS4

Essex will develop and implement a program to control the contribution of pollutants to its MS4 from commercial, industrial, municipal, institutional or other facilities, not otherwise authorized by a CT DEEP stormwater permit.

6.5 Evaluate Additional Measures for Discharges to Impaired Waters

(i) For waters for which **Nitrogen** or **Phosphorus** is a Stormwater Pollutant of Concern:

On Essex-owned or -operated lands, Essex will implement a turf management practices and procedures policy which includes, but is not limited to, procedures for proper fertilizer application and the planting of native plant materials to lessen the amount of turf area requiring mowing and the application of chemicals. Each Annual Report will discuss the actions taken to implement this policy with an estimate of fertilizer and turf reduction.

(ii) For Waters for Which **Bacteria** is a Stormwater Pollutant of Concern:

On Essex-owned or -operated lands with a high potential to contribute bacteria (such as dog parks, parks with open water, sites with failing septic systems), Essex will develop, fund, implement, and prioritize a retrofit or source management program to correct the problem(s) within a specific timeframe. Each Annual Report will identify problem areas for which a retrofit or source management program were developed, the location of the closest outfall monitored in accordance with Section 6(i), the cost of such retrofit or program, and the anticipated pollutant reduction. On Essex-owned or -operated lands, prohibit the feeding of geese or waterfowl and implement a program to manage geese and waterfowl populations. Each Annual Report will discuss the actions taken to implement this program.

6.6 Track Projects that Disconnect DCIA

Essex will annually track the total acreage of Directly Connected Impervious Area (DCIA) that is disconnected from the MS4 as a result of redevelopment or retrofit projects within the town. For each retrofit/redevelopment project, Essex will document the amount of existing DCIA that is disconnected. The total amount of disconnected DCIA will be reported each year in the Annual Report. Starting on July 1, 2021, Essex's goal will be to reduce 1% of its total DCIA acreage per year to the maximum extent possible. Essex will provide updates on this goal in its annual report. Essex will also incorporate all DCIA disconnections which occurred in the town since July 1, 2012 towards meeting this goal.

6.7 Develop and Implement an Infrastructure Repair, Rehabilitation and Retrofit Program

Essex will continue a program to identify MS4 structures to repair, rehabilitate, or upgrade to reduce or eliminate the discharge of pollutants into water bodies. This program will be responsive to new information on outfalls discharging pollutants, impaired waters, inspections, or observations made during outfall mapping under the IDDE section of this plan.

6.8 Develop and Implement Plan to Identify and Prioritize Retrofit Projects

Essex will develop a Retrofit Project Plan to identify and prioritize potential DCIA disconnection projects. Prioritization will be based on several factors, including whether the project lies within one of the MS4 priority areas (urbanized area, DCIA > 11%, discharge to impaired waters). Essex will include in its annual report for the third year of the permit (2020-2021) its identification and prioritization process, a rationale for the selection of projects to be implemented, and the total acres of DCIA to be disconnected upon implementation. The implementation of projects in this plan will begin by June 30, 2022.

6.9 Develop and Implement Street Sweeping Program

Essex will implement a program to provide for regular inspection and maintenance of Essex-owned or -operated streets, parking areas and other MS4 infrastructure.

Essex will establish and implement procedures for sweeping town-owned or operated streets and parking lots. All streets and parking lots within the MS4 Priority Areas will be inspected, swept and/or cleaned (as necessary) at least once per year in the spring following the cessation of winter maintenance activities (i.e. sanding, deicing, etc.). The procedures shall also include more frequent inspections, cleaning and/or sweeping of targeted areas determined by Essex to have increased pollutant potential based on the presence of active construction activity or other potential pollutant sources. Essex will identify such potential pollutant sources based upon surface inspections, catch basin cleaning or inspection results, land use, winter road deicing and/or sand application, impaired or TMDL waters or other relevant factors as determined by Essex. If wet dust suppression is conducted, the use of water will be minimized such that a discharge of excess water to surface waters and/or the storm sewer system does not occur.

For streets and parking lots outside the MS4 Priority Areas, including any rural uncurbed streets and parking lots with no catch basins, Essex will either meet the minimum frequencies above, or develop and implement an inspection, documentation and targeted sweeping and/or cleaning plan for those areas by June 30, 2018 and submit such plan with its year one Annual Report. For new and redeveloped municipal parking lots, Essex will evaluate options for reducing stormwater runoff to surface waters and/or the storm sewer system by the installing pervious pavements and/or other measures to promote sheet flow of stormwater.

- a. Essex will ensure the proper disposal of street sweepings in accordance with DEEP policies, guidance and regulations. Sweepings shall not be discharged back into the storm drain system and/or surface waters.
- b. Essex will document results of its sweeping program in its annual reports including: a summary of inspection results, curb miles swept, dates of cleaning, volume or mass of material collected, and method(s) of reuse or disposal. Essex will also include documentation of any alternate sweeping plan for rural uncurbed streets and any runoff reduction measures implemented.

6.10 Develop and Implement Catchbasin Cleaning Program

Essex will conduct routine cleaning of all catch basins and track catch basin inspection observations. Utilizing information compiled through its inventory of catch basins, operational staff and public complaints, Essex will optimize routine cleaning frequencies for particular structures or catchment areas as follows to maintain acceptable sediment removal efficiencies:

- a. Inspect all Essex-owned catch basins within MS4 Priority Areas at least once by June 30, 2020. Catch basins outside the MS4 Priority Areas shall be inspected by June 30, 2022.
- b. Prioritize inspection and maintenance for Essex-owned catch basins located near impaired waters and construction activities (roadway construction, residential, commercial, or industrial development or redevelopment). Essex will clean catch basins in such areas more frequently if inspection and maintenance activities indicate excessive sediment or debris loadings.
- c. Establish a schedule such that the frequency of routine cleaning will ensure that no catch basin at any time will be more than fifty (50) percent full. A catch basin sump is more than 50 percent full if the contents within the sump exceed one half the distance between the bottom interior of the catch basin to the invert of the deepest outlet of the catch basin.
- d. If a catch basin sump is more than fifty (50) percent full during two consecutive routine inspections/cleaning events, Essex will document that finding, investigate the contributing drainage area for sources of excessive sediment loading, and to the maximum extent practicable, abate contributing sources. Essex will describe any actions taken in its Annual Report.
- e. Essex will detail its plan for optimizing catch basin cleaning, inspection plans, and its schedule for gathering information to develop the optimization plan in its first annual report. Documentation shall include metrics and other information used to reach the determination that the established plan for cleaning and maintenance is optimal for the MS4. Essex will keep a log of catch basins cleaned or inspected.
- f. Essex will report in each Annual Report the total number of catch basins, number inspected, number cleaned, the total volume or mass of material removed from all catch basins and, if practicable, the volume or mass of material removed from each catch basin draining to water quality limited waters.

6.11 Develop and Implement Snow Management Practices

(i) Deicing Material Management

Essex will develop and implement standard operating practices for the use, handling, storage, application, and disposal of deicing products such as salt and sand to minimize exposure to stormwater; consider means to minimize the use and optimize the application of chloride-based or other salts or deicing product (while maintaining public safety) and consider opportunities for use of alternative materials; for any exterior containers of liquid deicing materials installed after July 1, 2017, Essex will provide secondary containment of at least 110% of the largest container or 10% of the total volume of all containers, whichever is larger, without overflow from the containment area.

(ii) Snow and Ice Control Practices

Essex will implement and refine its standard operating practices regarding its snow and ice control to minimize the discharge of sand, anti-icing or de-icing chemicals and other pollutants (while maintaining public safety).

Essex will establish goals for the optimization of sand and/or chemical application rates through the use, where practicable, of automated application equipment (e.g. zero-velocity spreaders), anti-icing and pre-wetting techniques, implementation of pavement management systems, and alternate chemicals.

Essex will maintain records of the application of sand, anti-icing and/or de-icing chemicals to document the reduction of chemicals to meet established goals.

Essex will ensure the proper training for deicing applications for municipal employees, institutional staff, or private contractors on lands and easements for which it is responsible for maintenance.

Essex will manage and dispose of snow accumulations in accordance with DEEP's Best Management Practices for Disposal of Snow Accumulations from Roadways and Parking Lots, revised 2/4/11 and as amended (see link at: www.ct.gov/deep/stormwater).

In its Annual Report, Essex will document results of its snow removal program including, at a minimum: the type of staff training conducted on application methods and equipment, type(s) of deicing materials used; lane-miles treated; total amount of each deicing material used; type(s) of deicing equipment used; any changes in deicing practices (and the reasons for the change); and snow disposal methods.

6.12 Interconnected MS4s

Essex will coordinate with operators of interconnected MS4s (such as neighboring municipalities, institutions and DOT) regarding the contribution of potential pollutants from the storm sewer systems, contributing land use areas and stormwater control measures in the respective MS4s. This same coordination will be conducted regarding operation and maintenance procedures utilized in the respective systems.

6.13 Sources Contributing Pollutants to the MS4

Essex will develop and implement a program to control the contribution of pollutants to its MS4 from commercial, industrial, municipal, institutional or other facilities, not otherwise authorized by permit issued pursuant to Sections 22a-430 or 22a-430b of the Connecticut General Statutes.

Pollution Prevention/ Good Housekeeping Schedule

BMP	Lead Department / Individual	Month / Year of Implementation	Measurable Goal
Develop/implement formal employee training program	Public Works/David Caroline & Ryan Welch	Annual Training	July 1, 2017
Implement MS4 property and operations maintenance	Public Works/David Caroline & Ryan Welch	Annually	July 1, 2017
Implement coordination with interconnected MS4s	Public Works/David Caroline & Ryan Welch	Annually	July 1, 2017
Develop/implement program to control other sources of pollutants to MS4	Public Works/David Caroline & Ryan Welch Health Dept/Lisa Fasulo	Completion	July 1, 2017
Evaluate additional measures for discharges to impaired waters	Public Works/David Caroline & Ryan Welch Town Engineer/Bob Doane Health Dept/Lisa Fasulo	Completion	July 1, 2017

Track projects the disconnect DCIA	Public Works/David Caroline & Ryan Welch	Completion	July 1, 2017
	Selectman's Office/ Betsy D'Amico		
Develop/implement infrastructure repair/rehab program	Public Works/David Caroline & Ryan Welch	Completion	July 1, 2017
	Town Engineer/Bob Doane		
Develop/implement plan to identify/prioritize retrofit projects	Public Works/David Caroline & Ryan Welch	Completion	July 1, 2020
	Town Engineer/Bob Doane		
Develop/implement street sweeping program	Public Works/David Caroline & Ryan Welch	Completion	July 1, 2017
Develop/implement catch basin cleaning program	Public Works/David Caroline & Ryan Welch	Completion	July 1, 2017
Develop/implement snow management practices	Public Works/David Caroline & Ryan Welch	Completion	July 1, 2017
Develop/implement Model Litter Control Ordinance	Health Dept/Lisa Fasulo	Completion	July 1, 2017
Pet Waste Management	Public Works/David Caroline & Ryan Welch	Prepare & Distribute Information	July 1, 2018
Automotive Maintenance (residential)	Public Works/David Caroline & Ryan Welch	Prepare & Distribute Information	July 1, 2018
	Health Dept/Lisa Fasulo		

Outfall Monitoring

Town of Essex will monitor and investigate all MS4 outfalls that discharge to impaired waterbodies by the end of the permit term. Using the outfall inventory developed under the IDDE minimum control measure, Essex will identify which outfalls discharge to impaired waters and screen them for the specific impairments.

Once half of all outfalls discharging to impaired waterbodies have been screened, the 6 outfalls contributing the highest level of pollutants will be identified and screened on an annual basis.

Based on the screening results, Essex will investigate the drainage areas of outfalls that are contributing to the impairment. The investigations may consider land use or development patterns, business or commercial activities, industrial activities, DCIA, natural contributors, MS4 maintenance issues, residential activities, or anything else potentially contributing to the source of the impairment.

Based on results of the drainage area investigations, Essex will implement measures to address sources of the impairments including the specific impaired waters provisions described within the permit control measures.

Plan Amendments

Essex will amend the SMP whenever:

1. there is a change which has the potential to cause pollution of the waters of the state; or
2. the actions required by the Plan fail to prevent pollution of the waters of the state or fail to otherwise comply with any other provision of this general permit; or
3. the Commissioner requests modification of the Plan.

Stormwater Management Plan Signatures

"I have personally examined and am familiar with the information submitted in this document and all attachments thereto, and I certify that, based on reasonable investigation, including my inquiry of those individuals responsible for obtaining the information, the submitted information is true, accurate and complete to the best of my knowledge and belief. I understand that a false statement made in this document or its attachments may be punishable as a criminal offense, in accordance with Section 22a-6 of the Connecticut General Statutes, pursuant to Section 53a-157b of the Connecticut General Statutes, and in accordance with any other applicable statute."

_____	<u>First Selectman Town of Essex</u>	_____
Chief Elected Official	Title	Date

_____	<u>Director of Health, Town of Essex</u>	_____
Principal Plan Preparer	Title	Date

Stormwater Management Plan Engineering Certification

"I hereby certify that I am making this certification in connection with a registration under the General Permit for the Discharge of Stormwater from Small Municipal Separate Storm Sewer Systems, submitted to the Commissioner by **Norman Needleman** for an activity located at or within the Town of Essex and that all terms and conditions of the general permit are being met for all discharges which have been created, initiated or maintained and such activity is eligible for authorization under such permit. I further certify that a system is in place to ensure that all terms and conditions of this general permit will continue to be met for all discharges authorized by this general permit at the site. I certify that I have personally examined and am familiar with the information that provides the basis for this certification, including but not limited to all information described in Section 3(b)(8)(A) of such general permit, and I certify, based on reasonable investigation, including my inquiry of those individuals responsible for obtaining such information, that the information upon which this certification is based is true, accurate and complete to the best of my knowledge and belief. I certify that I have made an affirmative determination in accordance with Section 3(b)(8)(B) of this general permit. I understand that the registration filed in connection with such general permit is submitted in accordance with and shall comply with the requirements of Section 22a-430b of Connecticut General Statutes, as amended by Public Act 12-172. I also understand that knowingly making any false statement made in the submitted information and in this certification may be punishable as a criminal offense, including the possibility of fine and imprisonment, under section 53a-157b of the Connecticut General Statutes and any other applicable law."

_____	Town Engineer	_____
Name	Title	Date
Town of Essex		
Company		

FIGURE 1 Site Location Map for Essex, Connecticut

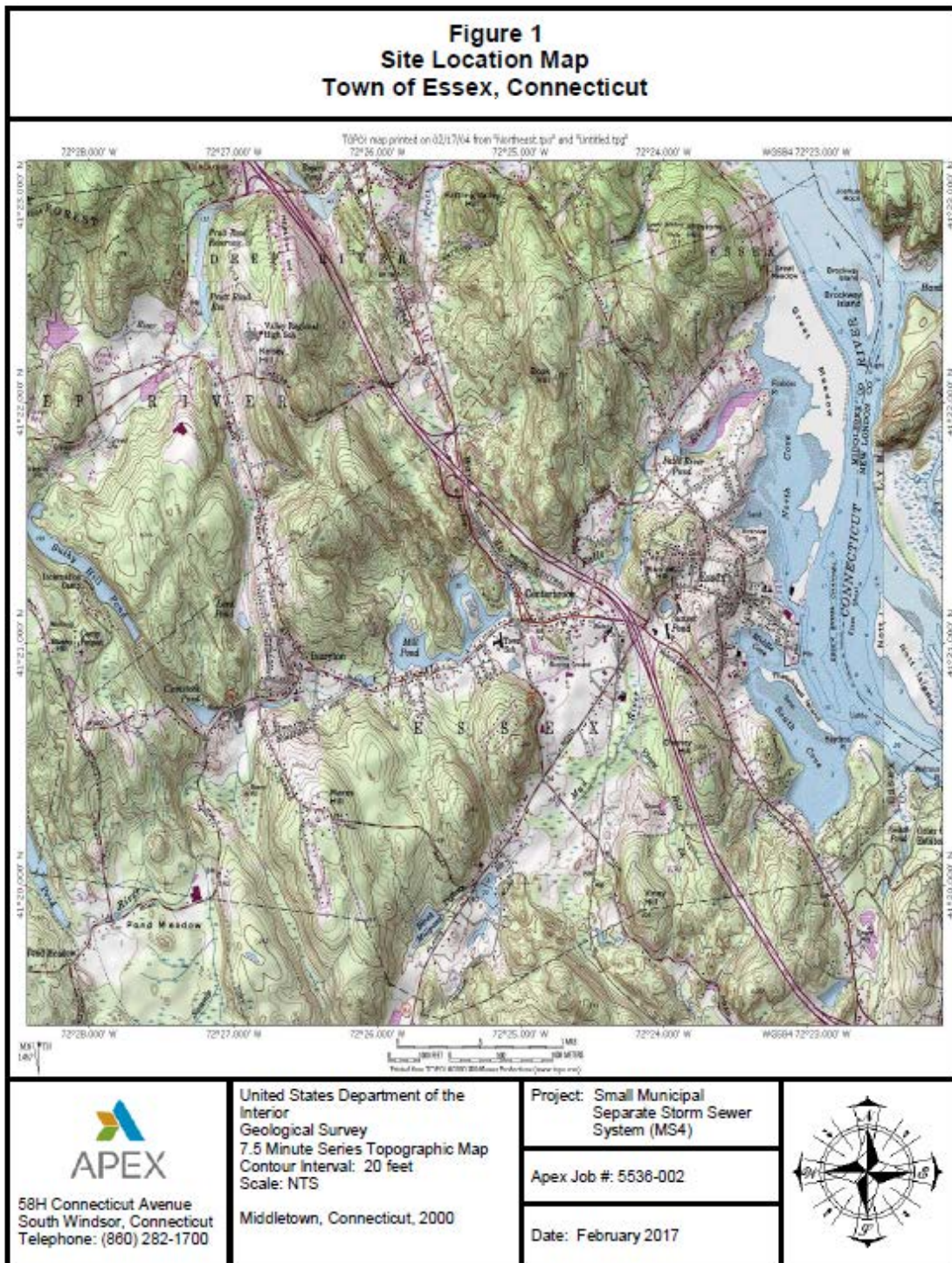
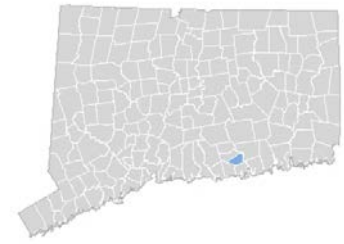
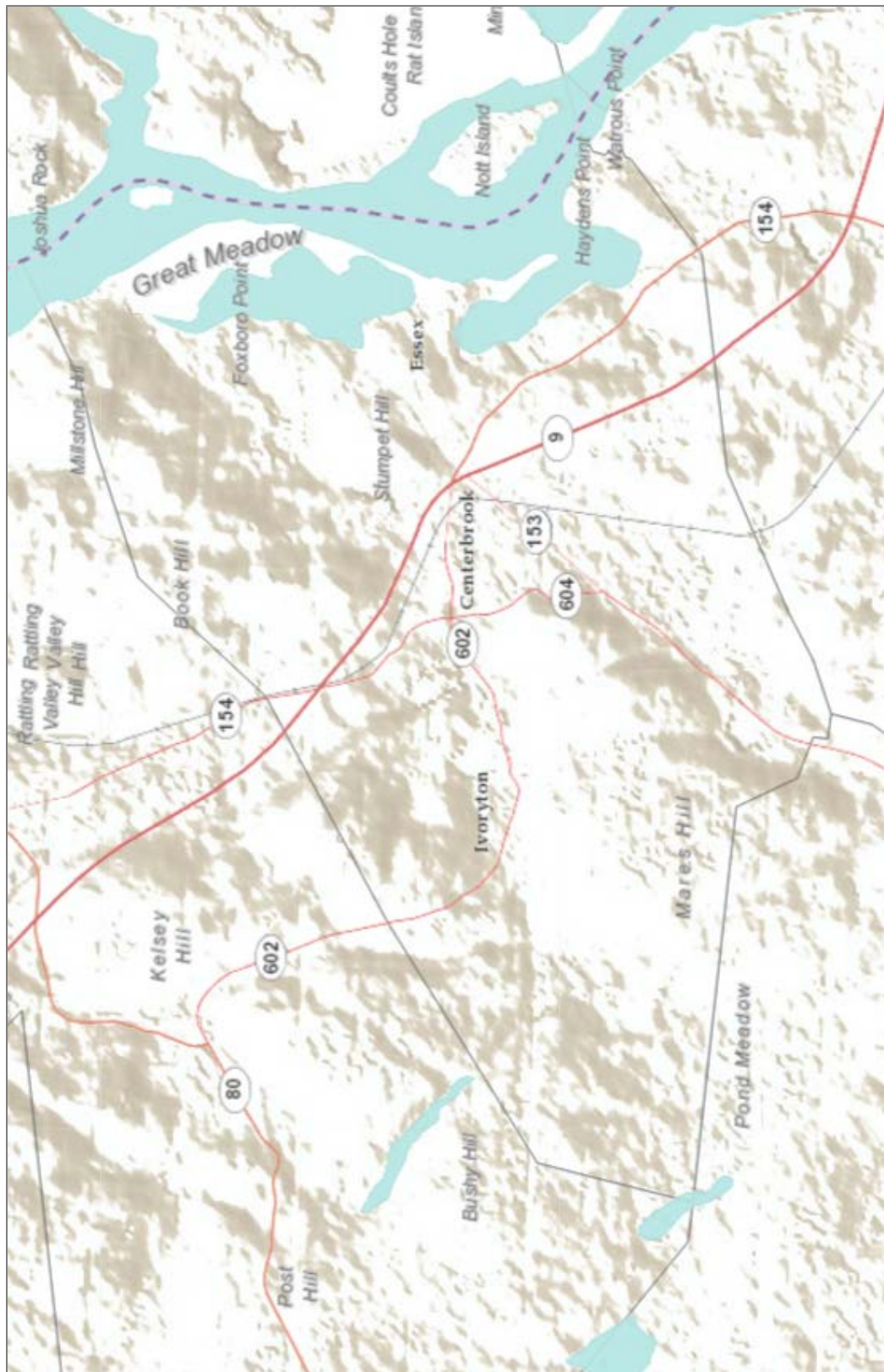


FIGURE 2 State Routes in Essex, Connecticut



<http://www.arcgis.com/apps/webappviewer>

FIGURE 3: Coastal Boundary Essex, Connecticut

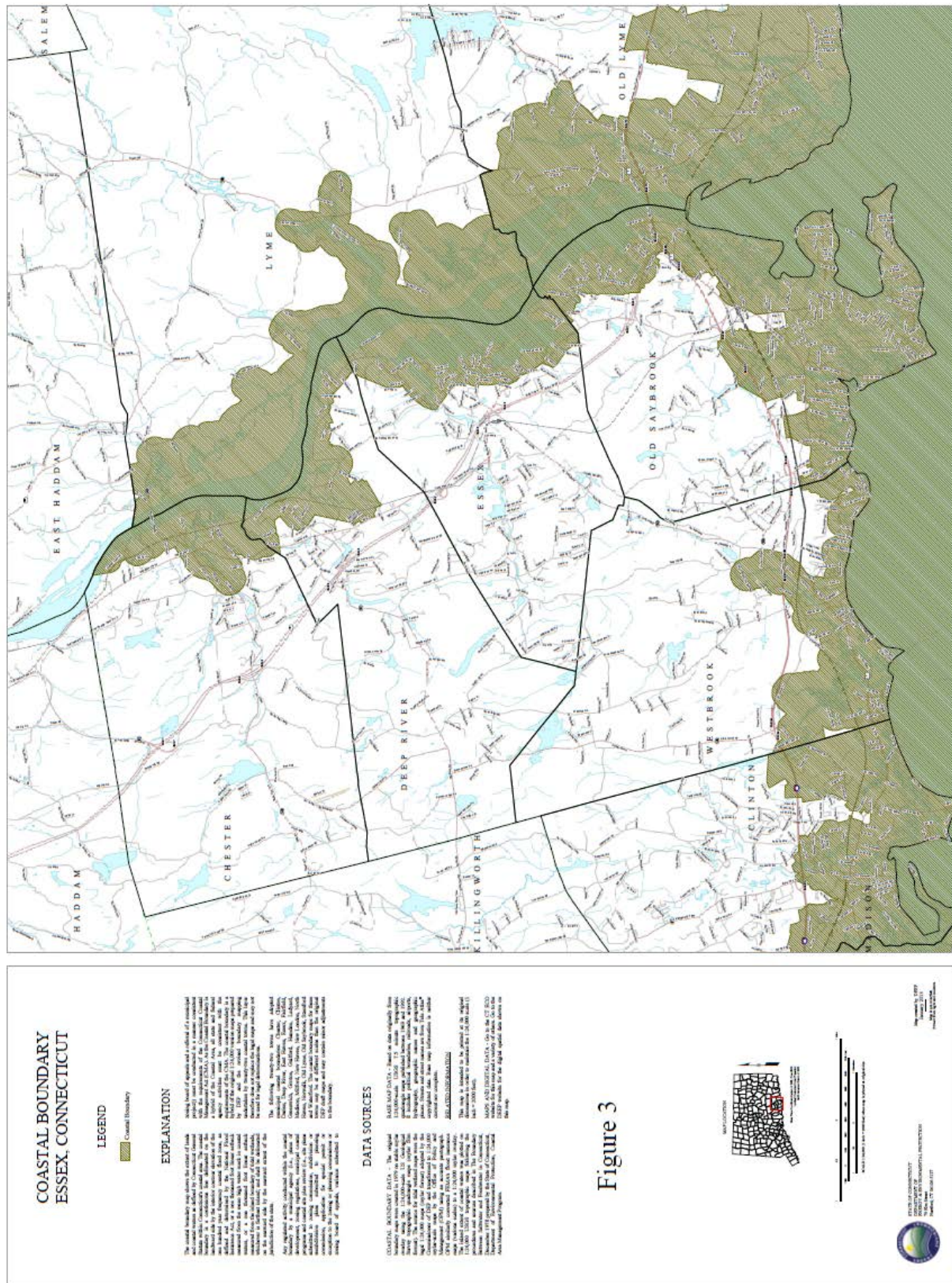


Figure 3

FIGURE 4: Endangered / Threatened Species Map (Natural Diversity Data Base Areas (NDDB)

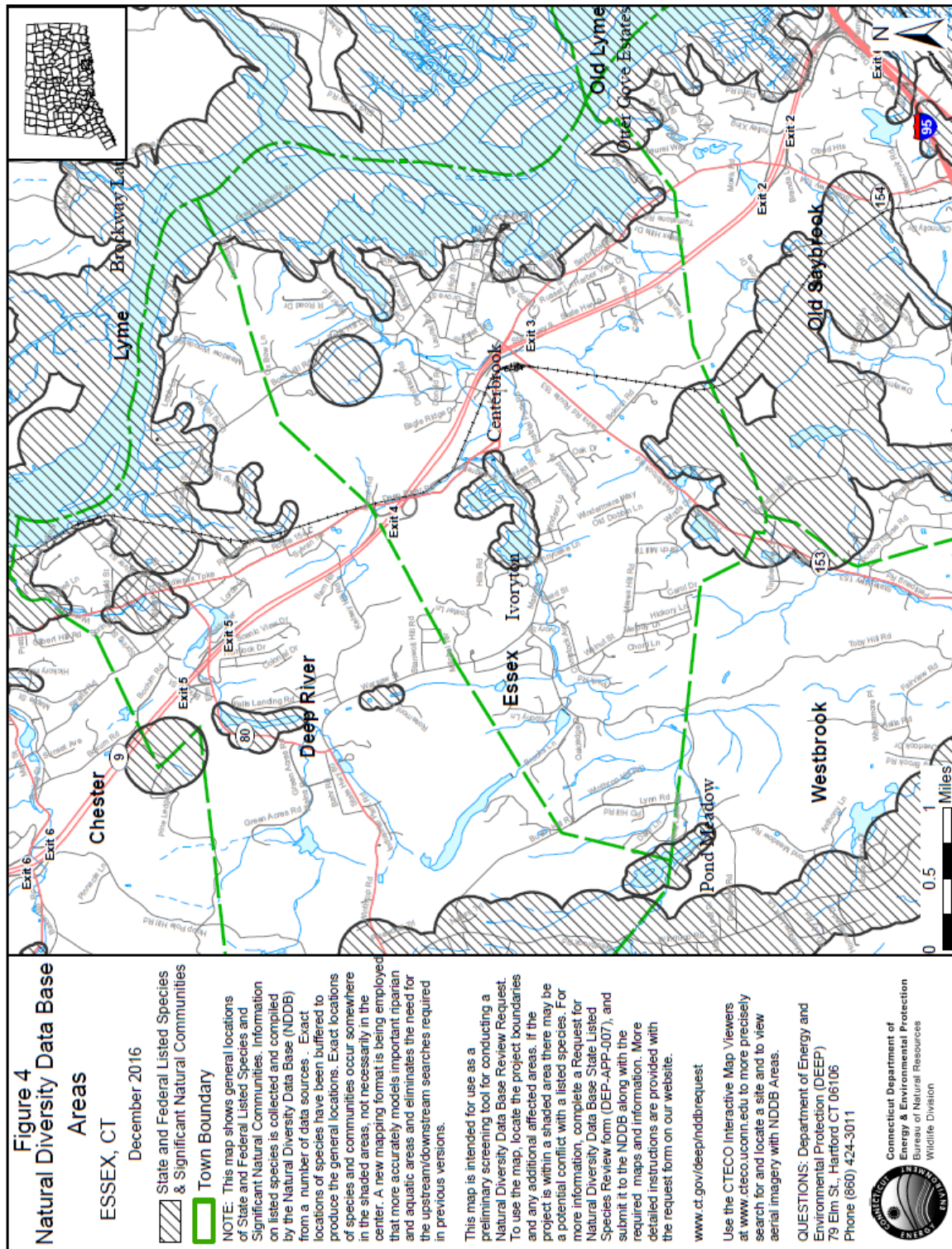
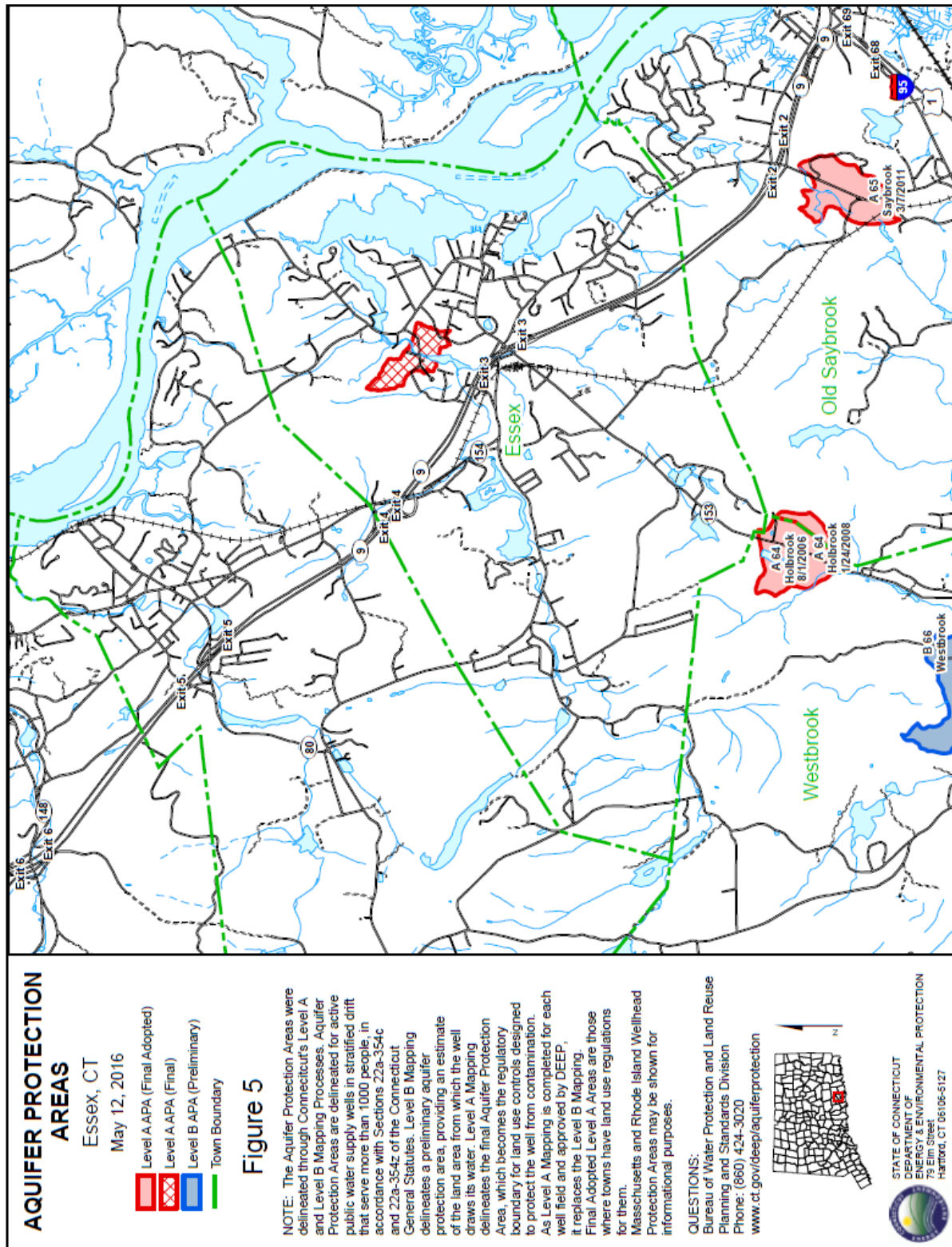


FIGURE 5: Aquifer Protection Areas



APPENDIX A

2017 MS4 General Permit for the Discharge of Stormwater from Small Municipal Separate Sewer Systems

APPENDIX B

Illicit Discharge Detection and Elimination Plan (To be developed)