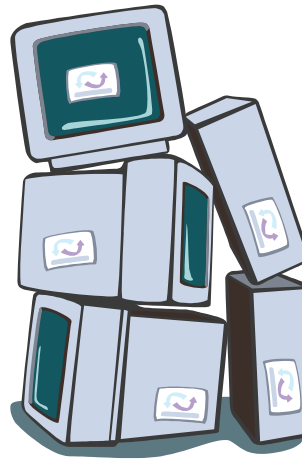


## CT RIVER ESTUARY REGION

### Consumer Collection

# 2009

# Electronics



### Directions

**FROM RTE. 9 DRIVING NORTH:**  
TAKE EXIT 4,  
GO STRAIGHT ACROSS RTE 154  
OVER RR TRACKS,  
AND UP THE HILL (DUMP ROAD)

**FROM RTE. 9 DRIVING SOUTH:**  
TAKE EXIT 4,  
GO LEFT OFF EXIT RAMP (RTE 154)  
AT LIGHT, TURN RIGHT (DUMP ROAD)  
CROSS OVER RR TRACKS, CONTINUE  
UP THE HILL

### Dump Road, Essex CT

FOR MORE INFORMATION,  
PLEASE VISIT  
[WWW.CRERPA.ORG](http://WWW.CRERPA.ORG) OR CALL  
CRERPA AT,  
(860) 388-3497

**SATURDAY**  
**April 18**  
**June 13**  
**Sept 5**  
**Oct 31**

**DUMP ROAD, ESSEX**

FOR INFORMATION VISIT  
[WWW.CRERPA.ORG](http://WWW.CRERPA.ORG) OR EMAIL  
[INFO@CRERPA.ORG](mailto:INFO@CRERPA.ORG) OR CALL  
860-388-3497

Printed on recycled paper



**CONSUMER  
ELECTRONICS  
COLLECTION**

**9 a.m. to 1 p.m.**  
Rain or Shine

Dispose and recycle your  
unwanted electronics...

**All four collections  
are open to Mid Ct &  
CRERPA towns:**

**Chester  
Clinton  
Deep River  
Essex  
Haddam  
Killingworth  
Lyme  
Old Lyme  
Old Saybrook  
Westbrook**

**No fee  
to participate!!**

**WHAT TYPE  
OF ITEMS  
TO BRING?**

**UNWANTED  
ELECTRONICS!**

**Items accepted  
at consumer electronics  
collections include:**

COMPUTER MONITORS

CPUS

PRINTERS

FAX

MACHINES

COPIERS

TVS

VCRS

RADIOS OR STEREOs

ANSWERING MACHINES

CELL PHONES



FOR QUESTIONS AND A COMPLETE  
LIST OF ACCEPTABLE ITEMS VISIT  
[WWW.CRERPA.ORG](http://WWW.CRERPA.ORG) OR EMAIL  
[INFO@CRERPA.ORG](mailto:INFO@CRERPA.ORG) OR  
CALL 860-388-3497